



Drawing No. ES F180

Exterior Glue Plywood
 3/4" (19mm) or 23/32" (18mm)

3.4# Galvanized Diamond Wire Metal Lath

Gypsum Underlayment

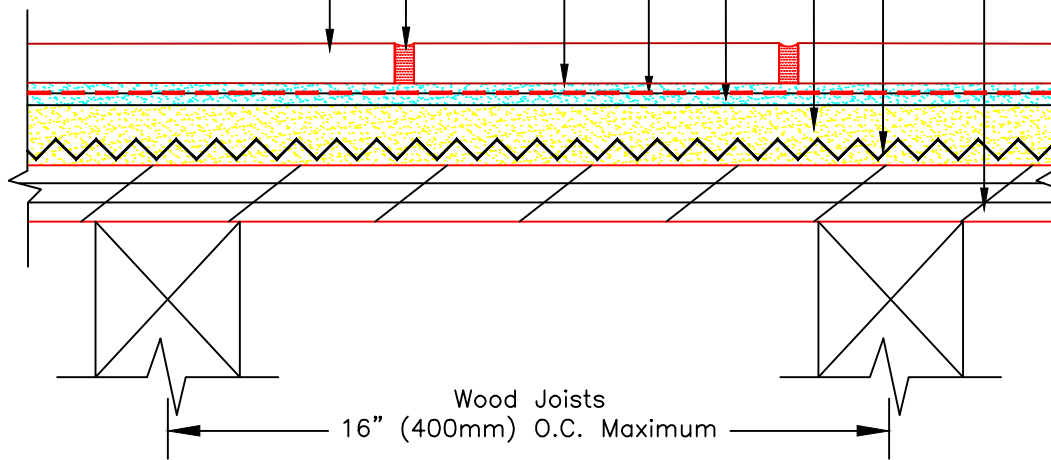
Hardened skim coat* (min. 1/8" [3mm]) over cured poured gypsum underlayment (in lieu of gypsum top coat spray)

HYDRO BAN®XP

Tile Installation Mortar*

SPECTRALOCK® PRO Premium Grout; or, PERMACOLOR® Select

Ceramic Tile or Stone



* Skim coat and Tile installation mortar to be either 254 Platinum Plus, 254 Platinum or MULTIMAX™ LITE. LATICRETE cannot warranty against cracking or water penetration if a LATICRETE waterproofing membrane is not installed.

Revision Date: 5/23

Scale: N.T.S.

AS A PROFESSIONAL COURTESY, LATICRETE OFFERS TECHNICAL SERVICES FREE OF CHARGE. THE USER MAINTAINS ALL RESPONSIBILITY FOR VERIFYING THE APPLICABILITY AND SUITABILITY OF THE TECHNICAL SERVICE OR INFORMATION PROVIDED.

(C)2023 LATICRETE INTERNATIONAL, INC. ALL RIGHTS RESERVED. THE RIGHT TO UTILIZE LATICRETE DETAILS FOR COMMERCIAL PURPOSES IS GRANTED EXCLUSIVELY TO CONTRACTORS, ARCHITECTS, QUANTITY SURVEYORS, ENGINEERS, AND SPECIFICATIONS WRITERS. ALL TRADEMARKS SHOWN ARE THE INTELLECTUAL PROPERTY OF THEIR RESPECTIVE OWNERS.