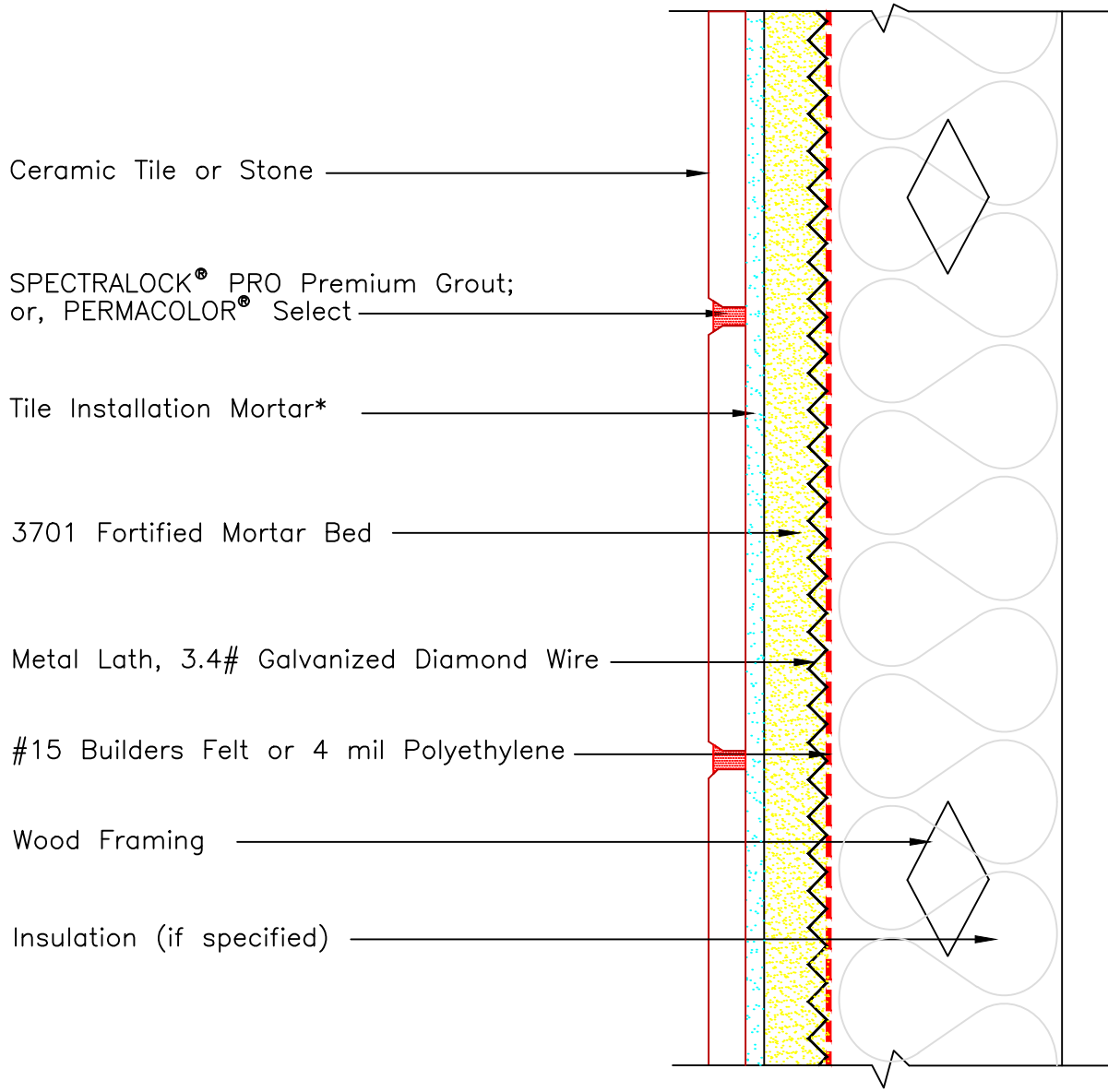




# Drawing No. ES W231(I)



Ceramic Tile or Stone

SPECTRALOCK<sup>®</sup> PRO Premium Grout;  
or, PERMACOLOR<sup>®</sup> Select

Tile Installation Mortar\*

3701 Fortified Mortar Bed

Metal Lath, 3.4# Galvanized Diamond Wire

#15 Builders Felt or 4 mil Polyethylene

Wood Framing

Insulation (if specified)

\* Tile installation mortar to be either 254 PLATINUM<sup>™</sup> Plus, 254 Platinum or MULTIMAX<sup>™</sup> LITE.

Revision Date: 1/24 Scale: N.T.S.

AS A PROFESSIONAL COURTESY, LATICRETE OFFERS TECHNICAL SERVICES FREE OF CHARGE. THE USER MAINTAINS ALL RESPONSIBILITY FOR VERIFYING THE APPLICABILITY AND SUITABILITY OF THE TECHNICAL SERVICE OR INFORMATION PROVIDED.

(C)2024 LATICRETE INTERNATIONAL, INC. ALL RIGHTS RESERVED. THE RIGHT TO UTILIZE LATICRETE DETAILS FOR COMMERCIAL PURPOSES IS GRANTED EXCLUSIVELY TO CONTRACTORS, ARCHITECTS, QUANTITY SURVEYORS, ENGINEERS, AND SPECIFICATIONS WRITERS. ALL TRADEMARKS SHOWN ARE THE INTELLECTUAL PROPERTY OF THEIR RESPECTIVE OWNERS.