



Globally Proven  
Construction Solutions

# Industrial Floor Systems



Snap for more information.



Interior

Exterior

Commercial

Residential

The LATICRETE® System provides low maintenance, high performance installations for all types of brick, pavers, porcelain, quarry, and ceramic tile. These time tested finishes are suitable for extra-heavy traffic and corrosive chemical environments and exceed all applicable standards when installed using the LATICRETE System.

The LATICRETE System combines water-based, non-hazardous, non-toxic materials with cutting edge installation methods to deliver performance that is far superior to any traditional installation.

Backed by over 50 years of global installations, the LATICRETE System maintains project integrity through the assurance of single source responsibility.

The LATICRETE Industrial Floor System meets the demanding requirements of the food processing, pharmaceutical and manufacturing industries by providing installation materials with maximum chemical resistant adhesives, mortars and grouts.

These products offer durability for extra heavy-duty industrial applications where the need for chemical, impact, thermal shock and high temperature resistance is mandatory. The LATICRETE System includes high strength, polymer fortified mortars, epoxy adhesives and chemical resistant epoxy grouts. They provide permanent, problem-free installations.



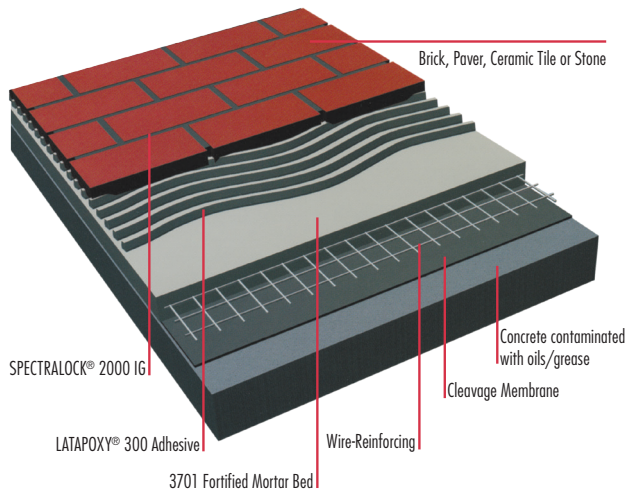
### Single Source Systems Approach for Industrial Floors

- LATICRETE polymer fortified adhesives — provide 150% greater bond strength than AS ISO 13007 requirements
- LATAPOXY® epoxy adhesives and grouts — deliver superior chemical resistance versus conventional epoxies and furans without their toxicity, difficult workability and clean-up
- LATICRETE vibrated floor system — incorporates the latest methods in efficient, quality oriented installation techniques
- LATICRETE accessory items — waterproofing, sound control and underlayments

### In Addition, the LATICRETE® System Provides:

- Permanent installations — problem-free
- Technical services — we will help your architectural staff with proper specifications, samples and details
- Job site assistance — our global sales network assures that you will have on-site assistance when and where you need it
- Global availability — LATICRETE materials and services are available worldwide
- Guaranteed — written labour and materials warranty

### Unbonded Mortar Bed

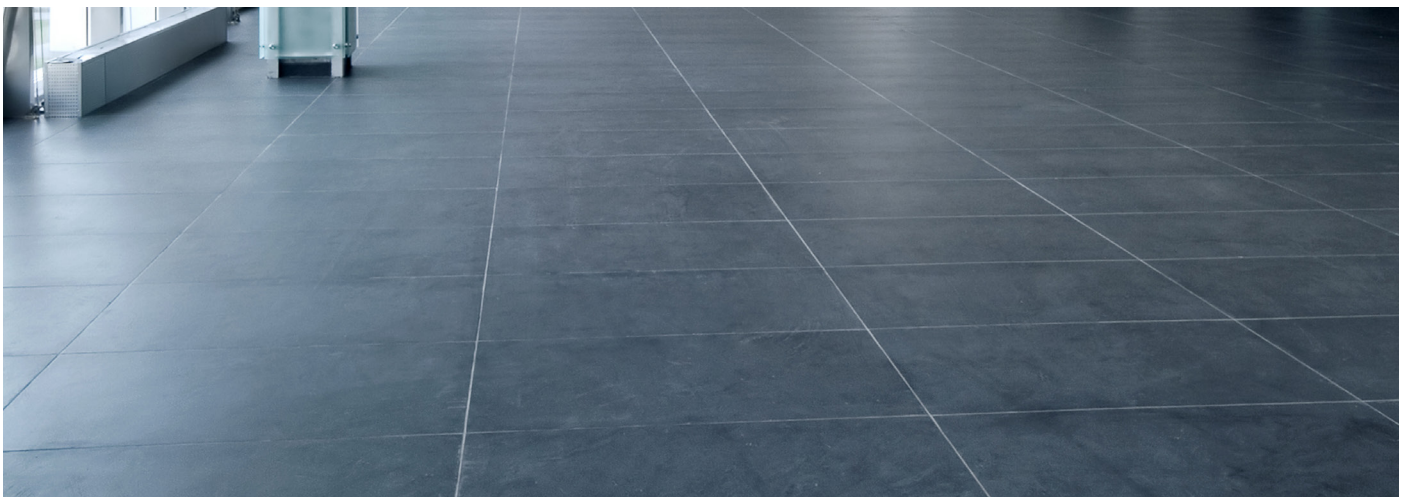


### Unbonded Thick Bed System

Use a reinforced 3701 Fortified Mortar Bed over a cleavage membrane where bonding to the substrate is not practical. Use where a structurally sound and durable installation is required. Provides a more sanitary underlayment than conventional mortar beds. Brick or tile can be wet fixed or thin-set fixed after drying. Grout with SPECTRALOCK® 2000 IG for a chemical resistant installation.

#### Advantages

- Superior load performance
- Performs over contaminated or unsound substrates
- Excellent chemical resistance
- Supports extra-heavy traffic



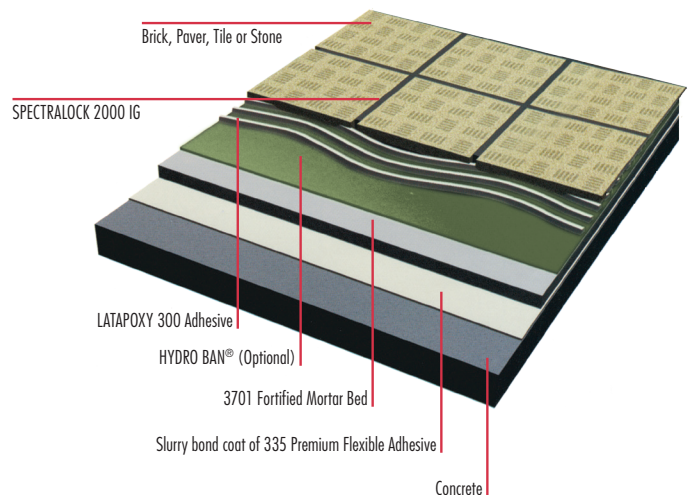
### Thin Bed System

Use bonded 3701 Fortified Mortar Bed where a structurally sound and durable installation is required. Provides a more sanitary underlayment than conventional mortar beds. Brick or tile can be thin-set fixed with LATAPOXY® 300 Adhesive directly to the bed or HYDRO BAN® in wet areas. Grout with SPECTRALOCK 2000 IG for a chemical resistant installation.

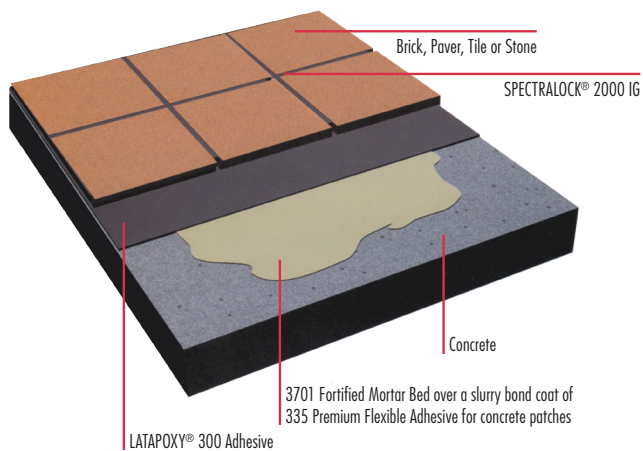
#### Advantages

- Provides for thinnest/lightest profile where height thickness restrictions are a consideration
- Short installation time
- Supports extra heavy traffic
- Excellent chemical resistance

### Bonded Mortar Bed



## Concrete Rehabilitation and Patch



## Rehabilitation Systems

For restoration of floor and wall sections, use LATICRETE® polymer fortified adhesives to patch and fill deteriorated concrete. Install and grout brick/paver/tile with LATAPOXY® epoxy adhesive and grout. Sound, existing bedded brick or tile can be regouted using SPECTRALOCK® 2000 IG, allowing for the quickest return to service.

### Advantages

- Fast job turnaround
- Low temperature installation
- Economical regout instead of replacing entire floor
- Chemical resistant and steam cleanable



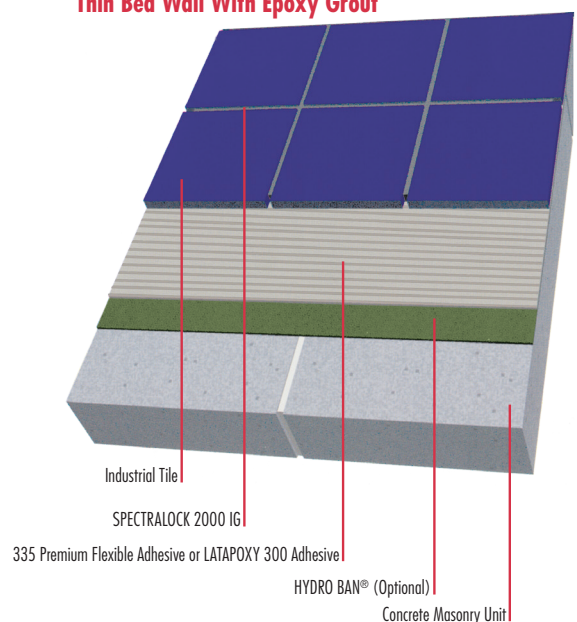
## Wall Applications

Suitable for ceramic tile, structural glazed facing tile and glazed masonry units. Ceramic tiles are installed over CMU (Concrete Masonry Unit) or cement backer board with LATICRETE polymer fortified thin-set adhesive or LATAPOXY epoxy adhesive. Grout with SPECTRALOCK PRO Grout\* for interior applications. Grout with PERMACOLOR®^ Grout for exterior applications. Structural glazed tile and masonry are tuck pointed with LATICRETE/LATAPOXY epoxy grout. LATICRETE/LATAPOXY epoxy grout is available in a range of colours including bright white.

### Advantages

- Provides a sanitary joint
- Wide range of colours
- Chemical resistant and steam cleanable
- Fast installation
- Waterproof (with HYDRO BAN®)

## Thin Bed Wall With Epoxy Grout



\* United States Patent No.: 6881768 (and other Patents).

^ United States Patent No.: 6784229 B2 (and other Patents).

### LATAPOXY® 300 ADHESIVE

#### CHEMICAL RESISTANCE

REAGENT TYPE AT 21°C	EXPOSURE TIME	
	INTERMITTENT	CONSTANT
Citric Acid 10%	R	R
Sulfuric Acid to 10%	R	R
Hydrochloric Acid to 10%	R	R
Lactic Acid 5%	R	R
Vinegar	R	NR
Acetic Acid 10%	R	NR
Nitric Acid 10%	R	R
Sodium Hydroxide 10%	R	R
Sodium Chloride 10%	R	R
Concentrated Detergents	R	R
Ammonium Hydroxide	R	R
Sugars	R	R
Gasoline	R	R
Cooking oils	R	R
Turpentine	R	R
Mineral Spirit	R	R
Toluene	NR	NR
Xylol	NR	NR

R = Recommended NR = Not Recommended

Splash	Minor spill wiped up quickly, such as in a laboratory.
Intermittent	Exposure where clean-up takes place several times a day, as in a commercial kitchen. Use the "continuous" exposure recommendations for intermittent exposure to reagents at temperatures above 32°C.
Continuous	Heavy exposure where clean-up is less frequent, such as in an industrial food plant.

#### LATAPOXY 300 Adhesive

##### Heat Resistance

Intermittent	120°C
Continuous	65°C

#### LATICRETE SpectraLOCK 2000 IG

##### Heat Resistance

Intermittent	180°C
Continuous	80°C



### SPECTRALOCK® 2000 IG

#### CHEMICAL RESISTANCE

CHEMICAL NAME	EXPOSURE TIME		
	SPLASH	INTERMITTENT	CONTINUOUS
<b>FOLIC ACID</b>			
Lactic Acid to 10%	R	R	R
Acetic Acid to 15%	R	R	R
Formic Acid to 5%	R	R	R
Citric Acid to 50%	R	R	R
Tannic Acid to 50%	R	R	R
Tartaric Acid to 50%	R	R	R
Oleic Acid to 10%	R	R	R
Phosphoric Acid to 80%	R	R	R
<b>MINERAL ACID</b>			
Hydrofluoric Acid to 1%	R	R	R
Sulfuric Acid to 50%	R	R	R
Nitric Acid to 30%	R	R	R
Hydrochloric Acid to 36.5%	R	R	R
<b>CORROSIVE CLEANERS</b>			
Sodium Hypochlorite (Bleach) 3%	R	R	R
<b>ALKALI</b>			
Sodium Hydroxide (Saturated)	R	R	R
<b>SOLVENTS</b>			
Xylene	R	R	R
Ethyl Alcohol	R	R	R
Mineral Spirits	R	R	R
Toluene	R	R	R
Methylene Chloride	NR	NR	NR
Ethyl Acetate	R	R	R

R = Recommended NR = Not Recommended

### Expansion Joints (Supplied by Others)

A critical element to the functionality of the total floor system.

- Mechanical type — pre-formed stainless steel, with impact, chemical resistant, polyurethane filler
- Field applied type — pourable polyurethane. Fast curing with excellent chemical and impact resistance

### Advantages

- Protects brick and tile edges from chipping (mechanical type)
- Provides for dynamic movement in the floor assembly — prevents cracking and delamination of tile



### Waterproofing Membranes

Required to isolate areas above occupied space, and to prevent seepage into concrete subfloor.

- Liquid applied — safe, water-based liquid rubber applied with roller or squeegee, bonds directly to concrete subfloor

### Advantages

- Safe, no flammables or solvents required for installation or clean-up
- Single source responsibility, compatible with all other components
- Breathable membrane, suitable over damp surfaces
- Thin — adds no appreciable thickness to floors or walls
- Adds antifracture capability to the tiling system.

### Underlayments

Provide leveling and pitching capability over structural concrete slabs and masonry walls.

- Epoxy type — a three component, modified epoxy adhesive for areas of extreme chemical exposure. Builds from 6 mm to 9 mm
- Polymer fortified type — Portland cement-based mortar that produces a high impact-resistant bed. Builds from 6 mm to 50 mm
- Self-leveling type — fluid, cement-based underlayment designed to level low areas. Builds from feather edge to 25 mm

### Advantages

- Single source responsibility
- Provides all-important pitch to drains in critical cleaning and wash areas

Visit the LATICRETE website,

[www.laticrete.com.au](http://www.laticrete.com.au)

for the *LATEST* information.

Consult LATICRETE **product data sheets**  
for **FULL** installation instructions.

# COMPLETE SYSTEM WARRANTIES

With a LATICRETE System Warranty you can enjoy peace of mind with high-quality, world renowned LATICRETE products. When selecting the installation system for your project, consider the value and peace of mind that a LATICRETE warranty can bring.

LATICRETE provides comprehensive warranties covering commercial, residential, and industrial projects around the world. However, our best guarantee is over 50 years of experience with industrial, commercial and residential installations in every imaginable climate around the world.

For more information, refer to Warranty Data Sheet DS-1097.



# GREENGUARD Certified & LOW VOC LEED COMPLIANT

Many companies might say their products are low VOC, only one independently certifies it – LATICRETE.

- Third Party GREENGUARD Certification, Required to Meet Stringent Indoor Air Quality Standards
- Certified by GREENGUARD for Children & Schools
- Helps Contribute Toward LEED Certification
- Product Certifications Readily Available at [www.laticrete.com/green](http://www.laticrete.com/green)



## CERTIFICATION

LATICRETE materials are certified by independent laboratories throughout the world to meet or exceed applicable industry standards/norms; including DIN, ANSI, AS, UEAtc, JIS, ASTM, ABSAC, UPC®, ICC, IAPMO, and ISO.

In Addition, Approvals Include:

- Board of Standards and Appeals, New York City
- Campden Food Research Corporation, United Kingdom
- Ceramic Tile Institute of America
- CSTB, France
- Department of Building and Safety, City of Los Angeles
- EMPA Swiss Federal Institute of Building Research
- GREENGUARD Certification
- International Association of Plumbing and Mechanical Officials (#3524)
- International Conference of Building Officials
- Lloyd's Register of Shipping
- London Underground
- Ministry of Public Works, England
- Ministry of Defense, England
- Underwriters Laboratories, Inc (Classified)





**Globally Proven  
Construction Solutions**

**LATICRETE Pty Ltd**  
29 Telford Street  
Virginia, QLD 4014  
Australia  
1800 331 012  
[www.laticrete.com.au](http://www.laticrete.com.au)

**DS-1114-0414**

©2014 LATICRETE Pty Ltd  
All trademarks shown are the intellectual properties of their respective owners.

Microban is a registered trademark of Microban Products Company.  
GREENGUARD Indoor Air Quality is a registered trademark of the GREENGUARD Environmental Institute.