



Rapid & Fast Setting Ceramic and Stone Tile Application Systems



Snap for more information.



Rapid & Fast Setting Ceramic and Stone Tile Application Systems

LATICRETE products in this brochure are recommended for installations of ceramic and stone tile where shorter wait times are required before opening to traffic.

An overview of each LATICRETE product is given as a general guide to facilitate the selection of the appropriate product for a specific application.

Refer to www.laticrete.com.au for long form Time vs Temperature installation charts, product application videos, Architectural Specifications, Architectural Details and comprehensive technical support.

Provided the ceramic and stone tile is installed in accordance with applicable industry standards and written LATICRETE installation instructions, projects utilising LATICRETE products can qualify for a comprehensive LATICRETE System Warranty.



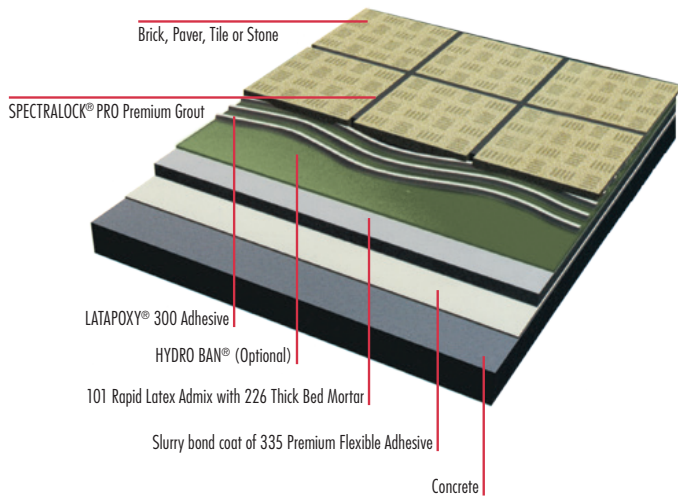
ADVANTAGES

- ✓ Shorter wait times before opening to traffic
- ✓ Time saving products
- ✓ Install and grout within hours

PRODUCTS / APPLICATIONS

- ✓ Surface Preparation
- ✓ Waterproofing / Crack Isolation
- ✓ Adhesive Mortars
- ✓ Grouting Products

Bonded Mortar Bed



Fast Setting Thick Bed System

1. 101 Rapid Latex Admix with 226 Thick Bed Mortar where structurally sound and heavy duty mortar beds and render installations are required in quick time.
2. HYDRO BAN® waterproof and crack suppression membrane for rapid drying and curing.
3. LATAPOXY® 300 Adhesive for high performance, chemical resistant bond.
4. SPECTRALOCK® PRO Premium Grout*.

Advantages

- Delivers thinner installation where height restrictions are a consideration
- Short installation time
- Supports extra heavy traffic
- Excellent chemical resistance



Spot Bonding System

LATAPOXY 310 Stone Adhesive is a two component, high strength epoxy adhesive, which is formulated for spot bonding fixing method of tile and stone installations on vertical surfaces. LATAPOXY 310 Stone Adhesive maintains its non-sag consistency at high temperatures up to 35°C.

Advantages

- Fast Permanent Bond — Rapid version; 5–8 minute set up.
- Easy to Use — 1:1 mixing ratio by volume.
- Non-Staining — ideal for white and light coloured marbles, other stones and tiles.
- Withstands shock and vibration.
- Durable permanent bond, will not deteriorate over time.
- Safe — no solvents.
- Non-Sag — when applied up to 25 mm thick.
- Normal version is available; 45 minutes to 1 hour set up.
- Conforms to EN 12004 and ISO 13007 with a classification of R2T.

Vertical Spot Bond Installation



WATERPROOFING MEMBRANE



See Data Sheet DS-1036 for complete product information.

HYDRO BAN®

HYDRO BAN® is a thin waterproofing and anti-fracture membrane that combines optimum performance and unmatched productivity. Our new improved formula is rapid drying allowing for a faster time to tile and flood test after final cure, as well as faster flood testing in cold temperatures and over mortar beds. Backed by the LATICRETE System Warranty[®]. HYDRO BAN does not require the use of fabric in the field, covers or corners and bonds directly to drains and pipe penetrations. Save yourself time and money, and complete your installations faster with greater ease.

LATEX ADMIX



See Data Sheet DS-1071 / DS-1050 for complete product information.

101 Rapid Latex Admix / 315 Super Floor & Wall Adhesive

101 Rapid Latex Admix when gauged with 315 Super Floor & Wall Adhesive makes a high performance thin-set adhesive to install tile and stone using the thin-bed method of installation where quick to traffic times are required. Specially formulated for fast set which allows fixing and grouting in the same day. For interior and exterior installations of all types of tile, brick and stone. 101 Rapid Latex Admix can be used with 226 Thick Bed Mortar for fast setting screeds and beds.

N.B: Refer to Time Vs Temperature table on page 6.

ADHESIVES



See Data Sheet DS-1080 / DS-1064 for complete product information.

4237 Rapid Latex Additive / 211

4237 Rapid Latex Additive is a specially designed additive for use with 211 powder to make a high strength latex thin bed and medium bed adhesive up to 15 mm bed thickness. For installing all types of tile, stone and agglomerates. Guaranteed proven performance and increase productivity.

N.B: Refer to Time Vs Temperature table on page 6.



See Data Sheet DS-1086 for complete product information.

LATAPOXY® 310 Rapid Stone Adhesive

LATAPOXY® 310 Rapid Stone Adhesive is a two component, high strength epoxy adhesive that achieves a fast permanent bond in 5 to 8 minute set time. Engineered, formulated and optimised for the spot bonding fixing method of installing tile and stone on vertical surfaces. LATAPOXY 310 Rapid Stone Adhesive maintains its non-sag consistency at high working temperatures up to 35°C. Interior, exterior, wet areas, walls, ceilings and soffits.



See Data Sheet DS-1047 for complete product information.

LATAPOXY® 300 Adhesive

A high-strength, three-part 100% solids epoxy adhesive formulated for improved chemical resistance and the ability to bond to specialised surfaces such as steel and aluminum.



See Data Sheet DS-1002 for complete product information.

335 Rapid Premium Flexible Adhesive

The ultimate one-component, polymer-fortified Rapid thin-set adhesive. Ideal for interior and exterior applications on virtually all substrates and applications including pools, fountains and façades. Increases your productivity with long open time. Exceptional bond strength for difficult to bond tiles.

UNCOUPLING MEMBRANE



See Data Sheet DS-1036 for complete product information.

STRATA_MAT™

STRATA_MAT™ is a next generation high performance uncoupling mat for use under tile and stone installations. For both residential and commercial applications. Designed to replace traditional underlayment materials. The unique patent pending design of STRATA_MAT provides for an enhanced mechanical bond of the adhesive and provides for faster drying of the adhesive, allowing for shorter time to grout. Specifically designed for use with both modified and unmodified adhesives, STRATA_MAT allows for the proper adhesive to be used with porcelain or large format tiles and stone.



COMPLETE SYSTEM WARRANTIES

With a LATICRETE® System Warranty you will enjoy peace of mind with high quality, globally proven LATICRETE products. When selecting the installation system for your tile or stone project consider the value and peace of mind that LATICRETE experience, expertise and warranty will bring.

LATICRETE provides comprehensive warranties covering commercial, residential, and industrial projects around the world. However, our best guarantee is over 60 years of experience with industrial, commercial and residential installations in every imaginable climate around the world.

Consult LATICRETE for complete warranty information for your particular project. Refer to the LATICRETE Warranty Data Sheet DS-1126 for additional information.

EPOXY GROUT



See Data Sheet DS-1039 for complete product information.

SPECTRALOCK® PRO Premium Grout*

SPECTRALOCK® PRO Premium Grout* can be used on both floors and walls. Stain resistant, easy to install and it never needs sealing. Highly recommended for use in swimming pools where greater chemical resistance is sought.



GREENGUARD Certified & LOW VOC LEED COMPLIANT

Many companies might say their products are low VOC, only one independently certifies it – LATICRETE.

- UL GREENGUARD® Environment Certification, Certified to Meet Stringent Indoor Air Quality Standards
- Certified to UL GREENGUARD Gold Standards
- Helps Contribute Toward LEED Certification
- Product Certifications readily available, refer to DS-1106 for a list of Green Certified and Low VOC products or go to <https://au.laticrete.com/en/innovation-and-impact/green-leed>

CERTIFICATION

LATICRETE materials are certified by independent laboratories throughout the world to meet or exceed applicable industry standards/norms; including DIN, ANSI, AS, UEAtc, JIS, ASTM, ABSAC, UPC®, ICC, IAPMO, and ISO.

In Addition, Approvals Include:

- CSIRO Australia
- Board of Standards and Appeals, New York City
- Campden Food Research Corporation, United Kingdom
- Ceramic Tile Institute of America
- CSTB, France
- CETEC
- EMPA Swiss Federal Institute of Building Research
- GREENGUARD Certification
- International Association of Plumbing and Mechanical Officials (#3524)
- International Conference of Building Officials
- Lloyd's Register of Shipping
- London Underground
- Ministry of Public Works, England
- Ministry of Defense, England
- Underwriters Laboratories, Inc (Classified)



Time Vs Temperature Table

4237 Rapid Latex Additive mixed with 211

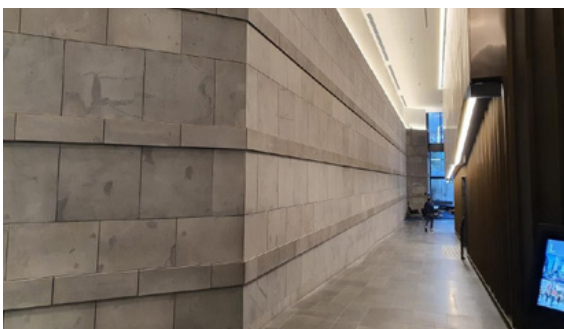
Install Tile at Temperature	Ready for foot traffic (hours)	Ready for heavy traffic (hours)
7° C	12	14
10° C	6	10
16° C	5	8
21° C	4	6
27° C	3	3.5
32° C	2	2.5

Open time: 15 minutes @ 21°C
Pot Life: 30 minutes @ 21°C

101 Rapid Latex Admix gauged with 315 Super Floor & Wall Thin-Set Adhesive

Install Tile at Temperature	Ready for foot traffic (hours)	Ready for heavy traffic (hours)
7° C	10	24
10° C	12	16
16° C	8	12
21° C	6	10
27° C	5	7
32° C	4	6

Open time: 20 minutes @ 21°C
Pot Life: 30 mins @ 21°C & 45 mins @ 4°C



Photos (Above and Top Left) courtesy of Trend Australasia.
Photo (Left) courtesy of Stanmor Ceramics, using LATAPOXY®310.

^ For more information please contact LATICRETE.

* United States Patent No.: 6,881,768 (and other Patents).

GREENGUARD Indoor Air Quality is a registered trademark of the GREENGUARD Environmental Institute.



Project by Clancy Constructions — using LATAPOXY®310



LATICRETE Australia Pty Ltd | 29 Telford Street, Virginia, QLD 4014 Australia | 1800 331 012 | www.laticrete.com.au

05-1150-0620 ©2020 LATICRETE Australia Pty Ltd | All trademarks shown are the intellectual properties of their respective owners.