



Globally Proven Construction Solutions

# Trend Terrazzo Tile

Waterproofing/Crack Isolation | Crack Isolation | Adhesives | Sealant | Grout



The LATICRETE products in this brochure are recommended for installing Trend Terrazzo Tiles. An overview of each recommended product is provided as a general guide to facilitate the selection of the appropriate LATICRETE product for the specific application. Refer to [www.laticrete.com.au](http://www.laticrete.com.au) for long form Architectural Specifications, Architectural Details and comprehensive technical support.

Provided that Trend Terrazzo Tiles are installed in accordance with applicable industry standards and written LATICRETE installation instructions, projects utilising Trend Terrazzo Tiles can qualify for a LATICRETE System Warranty.<sup>^</sup>

Trend Terrazzo Tile is a series of terrazzo-like engineered stone tiles and slabs that include numerous colours with recycled glass content. The material is composed of approximately 93% "grit", or chips, and 7% pigmented polyester resin. The grit, which is comprised of either quartz, porcelain, granite, glass, or mosaic, is crushed into nine different granule sizes.

These granules are mixed with the pigmented polyester resin and spread onto a large sheet mold where the slab takes its shape, is reinforced with a polyester mesh and finally the limestone backing is added. A slab is then calibrated and ready for the finishing that can be Polish, Matte or Honed. Available in slabs or cut to size tiles. A few of the most popular features of this material include:

- Very Large Format = Fewer Grout Lines
- Custom Water Jet Cuts = Sweeping Curves
- Suitable for Heavy Commercial Traffic Flooring
- Extremely Durable. Stain & Scratch Resistant
- Lightweight. 6 mm Thickness = Saves on Shipping Costs
- Low Everyday Maintenance and Maintenance Costs
- Custom Colours Available (Minimum 372 m<sup>2</sup>)

Non-Porous. Does Not Require Sealing. Fast Installation.

Trend Terrazzo Tile can be installed over existing tile, stone, terrazzo as well as concrete and other masonry surfaces.

**ALWAYS FOLLOW MANUFACTURERS INSTRUCTIONS. ALWAYS skim coat 100% of the tile back.**

Resin: 9% average (some colours are 7% but others can be up to 12%, fine grain or very large grain require more resin).

Always keep Trend Terrazzo tile horizontal. Trend Terrazzo can be bent with a minimum 26" radius (proper instruction necessary).



## WATERPROOFING/CRACK ISOLATION



### HYDRO BAN®

See Data Sheet DS-1036 for complete product information.

A thin, load-bearing, waterproofing/crack isolation membrane. A single-component, self-curing, liquid rubber polymer that forms a flexible, seamless, waterproofing membrane.

- Does Not Require the Use of Fabric
- Time to Flood Testing: 2 Hours<sup>§</sup> at +21°C; Longer When Colder
- Bonds Directly to Clean Steel and PVC Plumbing Fixtures. This is Important in Situations Where the Drain Type Does Not Incorporate a Clamping Ring for the Waterproofing to Tie Into, e.g., Trench Drains, and When Trying to Seal Up Around Pipe Penetrations
- Can Be Spray Applied With an Airless Sprayer

### Where to Use

In all wet areas and over existing, non-structural, hairline cracks of ≤3 mm in a suitable substrate prior to installing Trend Terrazzo Tiles. For horizontal and vertical applications.

<sup>§</sup> After final cure at 21°C and 50% relative humidity.

## SELF LEVELLER



### NXT LEVEL PLUS USED WITH NXT PRIMER

See Data Sheet DS-505.0 / DS-502.0 for complete product information.

NXT LEVEL PLUS is a high quality, cement-based, free-flowing underlayment for use in levelling interior substrates. Rapid setting formula produces a flat, smooth and hard surface for the installation of finished flooring.

### Where to Use

Use on internal substrates over concrete, cement terrazzo, ceramic tile and stone, cement sheet and exterior glue plywood. Can be used from 3 - 32mm in a single lift.

## UNCOUPLING MEMBRANE



### STRATA\_MAT™

See Data Sheet DS-1134 for complete product information.

STRATA\_MAT is a next generation high performance uncoupling membrane for use under ceramic tile and stone installations, for both residential and commercial applications. The unique patent pending design of STRATA\_MAT provides for an enhanced mechanical bond of the adhesive mortar and provides for faster drying of the mortar.

### Where to Use

Designed to replace traditional underlayment materials. Specifically designed for use with both modified and unmodified mortars, STRATA\_MAT allows for the proper adhesive mortar to be used with porcelain or large format tiles and stone.

## VAPOUR REDUCTION



### NXT™ VAPOUR REDUCTION

See Data Sheet DS-507.0 for complete product information.

NXT Vapour Reduction is a single-coat, 100% solids, liquid applied 2-part epoxy coating specifically designed for controlling the moisture vapour emission rate from new or existing concrete slabs prior to installing NXT underlayments.

### Where to Use

Concrete slabs (interior use only). Ideal for slab-on-grade construction and elevated slabs. Allows for the installation of vinyl, rubber, CVT, carpet, wood, ceramic tile, stone and other moisture sensitive floor coverings and floor adhesives.

## ADHESIVES



### LATAPOXY 300 Adhesive

See Data Sheet DS-1047 for complete product information.

Chemical resistant epoxy adhesive that will bond to most sound, clean surfaces. Adhesive spreads easily and cleans with water while fresh. A factory-proportioned kit consisting of epoxy resin, hardener and chemical resistant filler.

### Where to Use

On most vertical and horizontal applications and both wet and dry areas. Use on a variety of substrates including steel, concrete, exterior glue plywood and many more. See Data Sheet DS-1047 for all suitable substrates.

Surface Temperature for Application	+16°C to +32°C
Pot Life	45 minutes
Time to Grout	12 hours
Time to Light Traffic	12 hours
Time to Heavy Traffic	24 hours



### 290 Super Floor & Wall Thin-Set Adhesive / 101 Rapid Latex Admix

See Data Sheet DS-1050 / DS-1071 for complete product information.

290 Super Floor & Wall Thin-Set Adhesive is a high performance thin-set adhesive to install tile and stone using the thin-bed method of installation. Mix with water or fortify with LATICRETE latex admixture.

### Where to Use

Over a wide variety of substrates, including concrete, cement mortars, cement plasters, brick or block masonry and porcelain tiles. Also over HYDRO BAN and 9235 Waterproofing Membrane. For horizontal and vertical applications where high performance is required.

101 Rapid Latex Admix is a rapid setting latex admixture engineered to fortify thin set adhesives, cement grouts and cement mortar beds. Specially formulated for fast set which allows fixing and grouting in the same day. For interior and exterior installations of all types of tile, brick and stone.

### Where to Use

Over a wide variety of substrates, including concrete, cement mortars, brick or block masonry and LATICRETE waterproof membranes. Use to fortify thin-set adhesive or mortar beds.



### 335 Rapid Premium Flexible Adhesive

See Data Sheet DS-1002 for complete product information.

The ultimate one-component, polymer-fortified Rapid thin-set adhesive. Ideal for interior and exterior applications on virtually all substrates and applications including pools, fountains and façades.

- Increases Your Productivity With Long Open Time
- Easy to Trowel Adhesive Assures Proper Coverage on Both the Substrate and the Veneer
- Exceptional Bond Strength for Difficult to Bond Tiles

### Where to Use

Over a wide variety of substrates, including "green" or fresh concrete, cement mortars, cement plasters, exterior glue plywood, gypsum wallboard, gypsum plaster, plastic laminate, and porcelain tiles. Over HYDRO BAN and 9235 Waterproofing Membrane. For horizontal and vertical applications. For wet and dry areas.

Surface Temperature for Application	+4°C to +32°C
Pot Life	>40 minutes
Time to Grout	3 - 4 hours
Time to Light Traffic	4 hours



# Installation Materials for Trend Terrazzo Tiles

## GROUT

Determining joint widths: LATICRETE recommends a joint width of approximately 1% of the material length. The minimum should be 2 mm and the maximum 6 mm and/or should always conform to the minimum and maximum values as allowed by local regulations; see examples below:

Length of material	Joint width
20 cm or shorter	2 mm
30 cm	3 mm
40 cm	4 mm
60 cm or longer	6 mm



### PERMACOLOR® Grout<sup>^</sup>

See Data Sheet DS-1041 for complete product information.

Polymer-fortified cement grout.

### Where to Use

For colour consistency and superior strength. For residential and commercial applications. For joints 1.5 mm to 12 mm wide. For horizontal and vertical application. For wet and dry areas.

Surface Temperature for Application	+4°C to +32°C
Pot Life	40 – 60 min at 21°C
Final Set	3 hours
Heavy Foot Traffic	6 hours



### SPECTRALOCK® PRO Grout\*

See Data Sheet DS-1039 for complete product information.

Stain-resistant epoxy grout.

### Where to Use

For higher stain resistance and lower absorption (showers, countertops, bathrooms, etc.). For residential and light commercial applications. For joints 1.5 mm to 12 mm wide. For horizontal and vertical application. For wet and dry areas.

**Note:** Steam cleaning this product is not recommended.

	4°C	21°C	35°C
Working Time	120 min	80 min	30 min
Tack Free Time	12 hours	4 hours	2 hours
Light Foot Traffic	24 hours	12 hours	6 hours
Heavy Foot Traffic	48 hours	24 hours	12 hours

## SEALANT



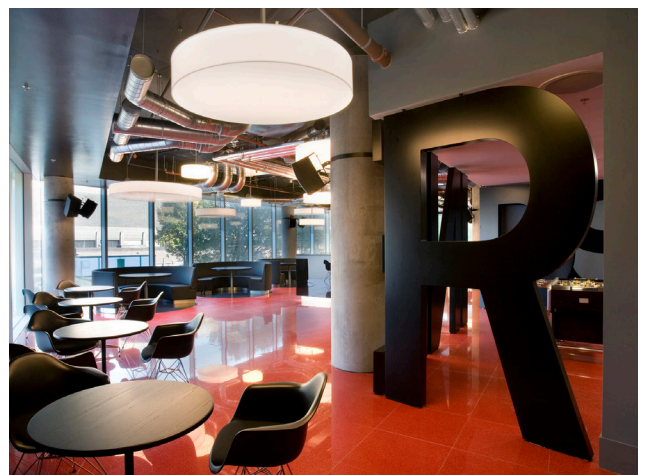
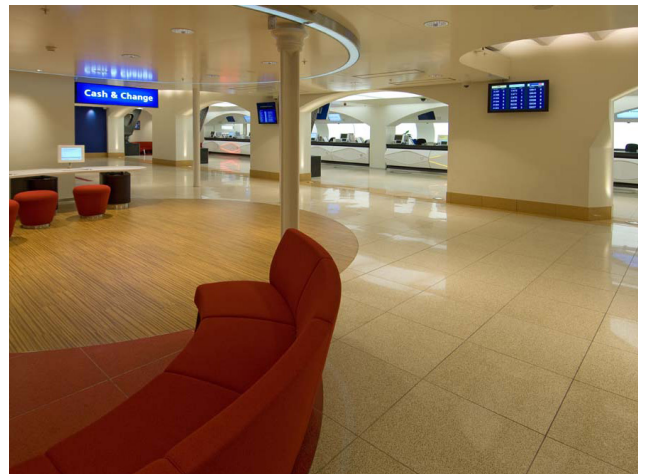
### LATASIL™

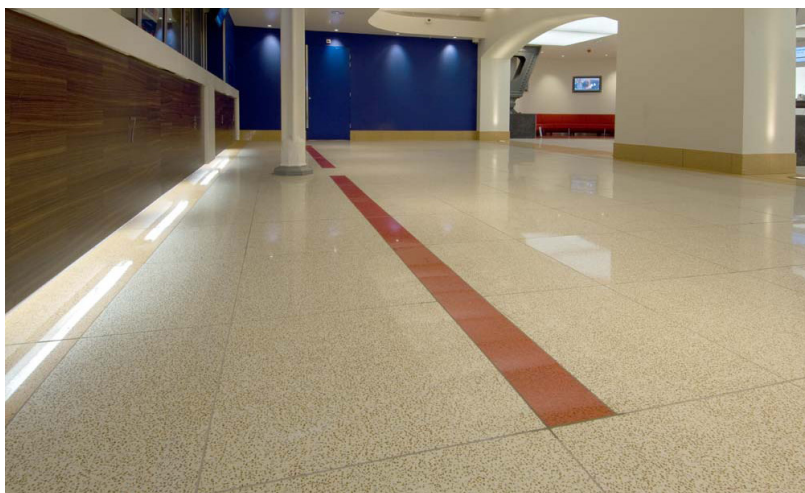
See Data Sheet DS-1074 for complete product information.

High performance silicone sealant designed for interior and exterior areas.

### Where to Use

In coves, corners, changes in plane and expansion joints in applications of Trend Terrazzo Tiles. Ideal for wet area applications.





**Trend Australasia**  
 7/5 Talavera Road  
 North Ryde, NSW 2113  
 P: 02 88175500  
 F: 02 88175556  
 E: [info-au@trend-group.com](mailto:info-au@trend-group.com)  
[www.trend-group.com](http://www.trend-group.com)

**LATICRETE Pty Ltd**  
 29 Telford Street  
 Virginia, QLD 4014  
 Australia  
 1800 331 012  
[www.laticrete.com.au](http://www.laticrete.com.au)

**T-1146-0614**

©2014 LATICRETE Pty Ltd  
 All trademarks shown are the intellectual properties of their respective owners.

<sup>^</sup> For more information please contact LATICRETE.  
<sup>\*</sup> United States Patent No.: 6,881,768 (and other Patents).