



# AQUA BARRIER

DS-751-0321

**Globally Proven  
Construction Solutions**



## 1. PRODUCT NAME

AQUA BARRIER

## 2. MANUFACTURER

LATICRETE Europe S.r.l. a socio unico  
Via Paletti, snc, 41051

Castelnuovo Rangone MO, Italy

Telephone: +39 059 535540

Email: [info@laticreteurope.com](mailto:info@laticreteurope.com)

Website: [laticrete.eu](http://laticrete.eu)

## 3. PRODUCT DESCRIPTION

AQUA BARRIER is a flexible cementitious waterproof slurry comprising of a liquid polymer and cement based powder. When mixed together and applied, it cures to a flexible seamless waterproof/anti-fracture membrane. It has been designed to protect cement-based plasters and concrete, including those on grade.

### Uses

- Interior and exterior
- For waterproofing before install of tile and stone
- Swimming pools, fountains, and water features
- Terraces and balconies over unoccupied spaces
- Restoring old balconies without removing existing floor
- Shower pans, stalls, and tub surrounds
- As a flexible levelling compound on concrete subject to vibrations or movement
- Protection of concrete from aging and carbonation
- Protection of concrete on grade
- Flexible levelling over plasters and screeds with micro-cracks

### Advantages

- Extremely flexible
- Easy to apply, two component waterproofing
- Prevents carbonation of concrete
- Crack suppression and anti-fracture protection of up to 1 mm over shrinkage and other nonstructural cracks
- Ideal for balconies, terraces, and pools with use of AQUA BARRIER NET

### Suitable Substrates

- Concrete
- Cement Mortar Bed
- Cement Mortar
- Cement Plaster/Render
- Concrete Masonry
- Masonry
- Cement Backer Board
- Ceramic Tile and Stone

### Packaging

- Part A: 25 kg bag; 48 bags per pallet
- Part B: 8 kg container; 48 containers per pallet
- 16,5 kg kit (Part A: 2 x 6,25 kg + Part B: 4 kg); 27 kits per pallet

### Coverage / Consumption

3 - 4 kg/m<sup>2</sup> at 2.5 - 3 mm dried thickness

### Shelf Life

Factory sealed bags of this product are guaranteed to be of first quality for twelve (12) months if stored in a cool, dry place.

### Limitations

- Always apply at least two coats, making sure to wait until the previous coat is dry before applying the next.
- DO NOT apply in thicknesses over 4 mm per coat.
- Always follow the mixing ratio recommended for the two parts.
- DO NOT apply in temperatures below +8°C.
- Protect from rain or bad weather for at least 24 hours after application.
- Prime highly absorbent surfaces with PRIMER PLUS or PRIMER SUPERIOR to improve adhesion.
- Avoid direct sunlight during application.

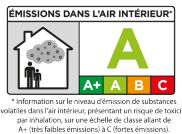
- Negative water pressure can lead to delamination during frost conditions.
- If waterproofing terraces, balconies and swimming pools, use AQUA BARRIER NET for improved performance.
- All coves, corners, columns, expansion joints, floor/wall transitions and other changes in substrate plane must initially be treated with WPM TAPE or WPM TAPE PLV before application of AQUA BARRIER. If using WPM TAPE, it must be applied using AQUA BARRIER. Note that WPM TAPE PLV should not be used in continuously submerged applications such as water tanks or swimming pools.

### Cautions

Consult SDS for more safety information.

- When installing on very porous substrates (such as lightweight screed or foamed clay), provide ventilating shafts every 25m<sup>2</sup> to help release humidity from the substrate.
- In hot and humid climates, coating may become slightly tacky/sticky during the curing process. If this occurs, mist coating with water 24 hours after application to ensure complete hydration of material.
- In areas with high humidity and inadequate ventilation (i.e. in water tanks) allow for extended drying times.
- Protect areas not being treated from AQUA BARRIER.
- To increase pot life/working time at higher temperature, store material in a cool environment above +5°C and only expose to warm temperature shortly before mixing.
- Part A contains cement. May irritate eyes and skin. Avoid contact with eyes or prolonged contact with skin. In case of contact, flush thoroughly with water.
- Keep out of reach of children.

## 4. TECHNICAL DATA



### VOC/LEED Product Information

ÉMISSIONS DANS L'AIR INTÉRIEUR: A

### Applicable Standard

- EN 14891 CM P
- ISO 9001:2015 Quality Management System

## Physical Properties

EN 14891 Classification:	CM P	
Basis:	A: Cement, aggregates, additives B: White latex	
Colour:	Grey / white	
Apparent Density:	1,25 g/cm <sup>3</sup>	
Maximum Grain Size:	0,3 mm	
Flammability:	No	
	<b>Value</b>	<b>Requirement</b>
Initial Adhesion:	~ 1,2 N/mm <sup>2</sup>	≥ 0.5 N/mm <sup>2</sup>
Adhesion after Immersion in Water:	~ 0,9 N/mm <sup>2</sup>	≥ 0.5 N/mm <sup>2</sup>
Adhesion after Heat Action:	~ 1,7 N/mm <sup>2</sup>	≥ 0.5 N/mm <sup>2</sup>
Adhesion after Freeze-Thaw Cycles:	~ 1,1 N/mm <sup>2</sup>	≥ 0.5 N/mm <sup>2</sup>
Adhesion after Immersion in Calcium-Saturated Water:	~ 1,1 N/mm <sup>2</sup>	≥ 0.5 N/mm <sup>2</sup>
Adhesion after Immersion in Coloured Water:	~ 0,8 N/mm <sup>2</sup>	≥ 0.5 N/mm <sup>2</sup>
Waterproofing at 1.5 bar for 7 days (standard pressure):	No penetration	No penetration
Crack-bridging Ability (in standard conditions):	~ 1,1 mm	≥ 0,75 mm

## Working Properties

Consistency:	Creamy paste
Wet Density:	1,63 g/cm <sup>3</sup>
Mix Ratio:	32% (8 L per 25 kg bag, A:B)
Working Time:	~ 60 minutes
Application Temperature:	+5°C to +30°C
Average Time to Second Coat:	~4 hours
Time to Tile Install:	24 hours
Maximum Thickness per Coat:	2 mm
Maximum Total Thickness (Dried):	5 mm
Temperature Resistance (after cure):	From -30°C to +70°C

(at +23°C / 50% R.H.)

Specifications subject to change without notification. Results shown are typical but reflect test procedures used. Actual field performance will depend on installation methods and site conditions.

## 5. INSTALLATION

### Substrate Preparation

All substrates must be structurally sound, clean and free of dirt, oil, grease, paint, laitance, efflorescence, concrete sealers or curing compounds. Any wax or grease should be removed from old ceramic floors using a basic detergent. Screeds and concrete must be completely cured, at least 30 days for screeds and 3 months for concrete.

Prime highly absorbent surfaces like lightweight concrete with PRIMER PLUS or PRIMER SUPERIOR to improve adhesion.

The substrate must be damp during application. Dampen hot, dry surfaces and sweep off excess water. Protect work area from direct sunlight before application.

For exterior applications, always maintain expansion joints from the substrate and treat with WPM TAPE or WPM TAPE PLV.

For all coves, corners, columns, expansion joints, floor/wall transitions and other changes in substrate plane, treat with WPM TAPE or WPM TAPE PLV before application of AQUA BARRIER. If using WPM TAPE, it must be applied using AQUA BARRIER. *Note: Do not use WPM TAPE PLV in continuously submerged applications such as water tanks or swimming pools.*

### Mixing & Application

During the summer, keep AQUA BARRIER out of direct sunlight before use. One 8 kg pail of latex is needed for each 25 kg bag of powder. To mix smaller amounts, always use a mixing ratio of 1-part latex to 3-parts powder.

Pour the latex (part B) into a clean container, and then add the powder (part A). Mix by hand or with a mechanical mixer at a low speed to prevent mixing in too much until you have a smooth, homogenous, lump-free paste. Do not add water, aggregates or hydraulic binders. If the mixture is already hardening, do not attempt to use additional water or part B (liquid) to make it workable again. Wait approx. 1 days after applying AQUA BARRIER before installing tiles and lay with wide joints (at least 3 mm), using a C2 adhesive.

### When waterproofing terraces, balconies or swimming pools:

we always recommend you add a fiber glass mesh like AQUA BARRIER NET to the first layer of AQUA BARRIER.

## 6. AVAILABILITY AND COST

### Availability

LATICRETE® materials are available worldwide. For distributor information, please contact LATICRETE EUROPE S.r.l.:

+39 059 535540

[info@laticreteurope.com](mailto:info@laticreteurope.com)

For on-line distributor information, visit [www.laticrete.eu](http://www.laticrete.eu).

### Cost

Contact LATICRETE EUROPE S.r.l to obtain complete information and cost.

## 7. WARRANTY

The supplier warrants that the product will not deteriorate under normal conditions and use. The

warranty validity of one (1) year. Contact Technical Services for further information. See 10. FILING SYSTEM:

- DS230.13EU: 1 Year Product Warranty (EN)

## 8. MAINTENANCE

LATICRETE® and LATAPOXY® are products of high quality designed to achieve lasting installations and avoid maintenance, however performance and durability may depend on properly maintaining products, depending of the cleaning products used.

## 9. TECHNICAL SERVICES

### Technical Assistance

Information is available by calling or emailing the Technical Service Hotline:

+39 059 535540

[technicalservices@laticreteurope.com](mailto:technicalservices@laticreteurope.com)

### Technical and Safety Literature

To obtain technical and safety literature, please visit our website at [www.laticrete.eu](http://www.laticrete.eu).

### Warning

The information and the instructions in the data sheet, although based on knowledge gained through years of applications, are indicative. LATICRETE® is unable to directly control the installation methods and conditions of products and does not assume any liability arising from their implementation. Those who want to use LATICRETE® products should conduct adequate tests to determine the site specifications. Results shown are typical but reflect test procedures used. Actual field performance will depend on installation method and site conditions.

LATICRETE® products are covered by a warranty within the limits of what is established by our general conditions of sale and within the limits of correspondence related to technical specifications and applicable certifications, as expressly indicated in the product data sheets, documentation, or applicable technical documentation.

## 10. FILING SYSTEM

Additional product information is available on our website at [laticrete.eu](http://laticrete.eu). The following is a list of related documents:

- DS 230.13: 1 Year Product Warranty