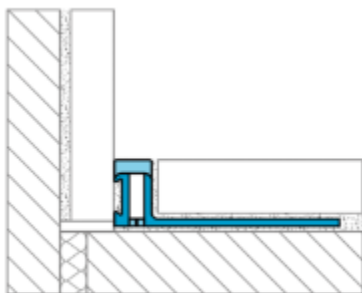




# Perimeter Joint - Style 1 (PJ1)

DS-65429-0425

**Globally Proven  
Construction Solutions**



## 1. PRODUCT NAME

Perimeter Joint - Style 1 (PJ1)

## 2. MANUFACTURER



Made in Germany for;

**LATICRETE Middle East LLC.**

P.O. Box 86028, Ras Al Khaimah

United Arab Emirates

Toll Free (with in UAE): 8005632

Telephone: +971 7 244 6396

Fax: +971 7 244 5915

Web: [www.laticrete.me](http://www.laticrete.me)

## 3. PRODUCT DESCRIPTION

A PVC joint that is designed to accommodate movement when tiling against a fixed structure such as a wall, support, or door frame. Made of coextruded hard and soft PVC, they are available in a variety of colors. Suitable for residential and light commercial projects, they can be used indoors as an alternative to caulking.

### Uses

- Expansion & Movement Joint Applications

### Advantages

- Accommodates movement and reduces stress
- Creates a clean, professional appearance
- Protect the tile from chipping and cracking
- Alternative to caulking

### Suitable Substrates

- LATICRETE Profiles & Trims are compatible with LATICRETE Adhesive & Mortar products (Refer to the applicable adhesive and mortar data sheet for complete installation instructions and suitable substrates.)

### Limitations

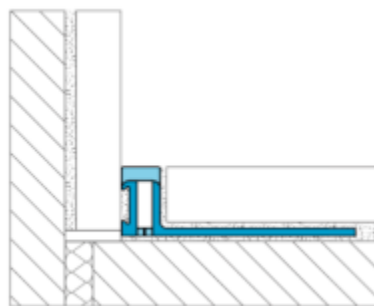
- Areas subject to high chemical exposure such as swimming pools, commercial kitchens, etc. require the use of Stainless Steel 316.
- Normal wear and tear of profiles after installation is expected. As such, scratches, dents, corrosion, and/or discoloration resulting from typical use are not considered product defects.

### Cautions

- Follow all tool manufacturer's directions, warning, and safety procedures when cutting and/or trimming profiles
- Cut edges may be sharp. Use caution when handling profiles.

## 4. TECHNICAL DATA

### Physical Properties



Property	Specification
Visible Width	3/16" (5 mm)
Height	3/16" - 1/2" (4.5 mm - 12.5 mm)
Length	8'-2.5" (2.5 m)
Nominal Thickness	1/16" (1.5 mm)

#### Available PVC Colors

- ALM - Almond
- BWH - Brilliant White
- GRE - Grey
- GGR - Grout Grey
- MHG - Manhattan Grey
- MUS - Mushroom
- RAV - Raven
- SPE - Sand Pebble
- STG - Stone Grey

#### Working Properties PVC

Property	Specification
Hardness	65 +/- 5 Shore A
Intermittant Operating Temperature	up to 149°F (up to 65°C)
Maximum Operating Temperature	up to 194°F (up to 90°C)

Specifications subject to change without notification. Results shown are typical but reflect test procedures used. Actual field performance will depend on installation methods and site conditions.

## 5. INSTALLATION

### Selecting the Correct Size Profile

Careful selection of the profile size is critical to ensuring the functionality and appearance of the final installation. Profiles should be selected based on the size of the accompanying tile. Use a profile equal in height or slightly larger than the tile thickness to allow for the profile and tile to sit flush relative to one another when fully installed. Allow for additional space for adhesive when used in combination with large and heavy format tiles.

### Cutting PVC Profiles

Always refer to cutting tool manufacturer's instructions, cautions, and requirements prior to cutting profiles. Use appropriate safety equipment and personal protective equipment (PPE) as instructed by the manufacturer of the cutting tool.

Prior to installing the tile, make sure the profiles, corners, and connectors are accurately measured and dry-fitted. Measure and mark the profile to the correct length before cutting. PVC profiles may be cut with any of the a set of miter shears. Make sure the blade is clean and sharp.

Once cut, inspect the cut end and use a file to remove any burrs that may have formed during the cutting process. If necessary, the mounting leg may be trimmed using metal or tin snips to avoid interference or overlapping of adjacent profile pieces.

### Installing Profiles

Apply tile adhesive with a margin or notched trowel to the area where the profile will be installed. Firmly press the profile into the adhesive, allowing the adhesive to flow through octagonal cutouts in the mounting leg. Adjust and straighten the profile if necessary.

Using an appropriate notched trowel and adhesive for the tile to be installed, add more adhesive over the mounting leg and surface fully embedding the mounting leg of the profile. Press the tile firmly into the adhesive to achieve full coverage, ensuring the profile and tile are aligned and flush. Leave a 1/16" to 1/8" gap between the profile and tile for grouting. Continue tiling the rest of the area.

Immediately after installing the profiles and tile, clean the surface of the profile to remove any residual adhesive or cement material with clean fresh water and a sponge or microfiber cloth. Aluminum is sensitive to alkaline materials and failure to clean the profile surface can lead to staining or discoloration (oxidation spots) which can be very difficult to remove.

## 6. AVAILABILITY AND COST

### Availability

LATICRETE® materials are available worldwide.  
For distributor information,  
please contact us by email at: [enquiry@laticrete.me](mailto:enquiry@laticrete.me) or,  
visit [www.laticrete.me](http://www.laticrete.me)

### Cost

Contact a LATICRETE® closer distributor to obtain  
complete information and cost.

## 7. WARRANTY

The supplier warrants this product will not deteriorate  
under normal conditions and use, the warranty validity  
of one (1) year. The product subject to the terms and  
conditions stated in the LATICRETE® Product Warranty.  
Please consult our technical support for further information.

## 8. MAINTENANCE

PVC profiles require no special maintenance or care but  
should be periodically cleaned to maintain their  
appearance. Clean profiles using fresh clean water and  
a soft sponge or microfiber cloth, a neutral pH cleaner  
such as STONETECH® Stone & Tile Cleaner may also  
be used. If cleaning agents are used, they must be free  
of hydrochloric and/or hydrofluoric acids. Do not use  
any abrasive cleaning products as they can scratch or  
mar the decorative surface.

## 9. TECHNICAL SERVICES

### Technical assistance

For information contact us by email at: [enquiry@laticrete.me](mailto:enquiry@laticrete.me)  
Technical and safety literature  
To obtain technical and safety literature, please visit our  
website at: [www.laticrete.me](http://www.laticrete.me)

### Warning:

The information and the instructions in the data sheet,  
although based on knowledge gained through years of  
applications, are indicative. LATICRETE® unable to directly  
control the installation conditions and modalities of application  
of products, do not assume any liability arising from their  
implementation. Those who want to use the LATICRETE®  
products must conduct adequate tests to determine the site  
specifications. Results shown are typical but reflect test  
procedures used. Actual field performance will depend on  
installation method and site conditions.