



For The Builders of  
A Better World

# Façade Tile & Stone Installation Systems



Snap for more  
information.

**Interior   Exterior   Commercial   Residential**

Credit: Project address: 5-9 Roslyn St, Kings Cross, Sydney, Australia.  
Project completed by: Beebo Constructions Pty Ltd, NSW, Australia using a full LATICRETE Installation System.

Components of the Façade Installation System .....	3
Façade Tile & Stone Installation Materials .....	4
LATICRETE Façade System Warranty .....	5
Façade Tile & Stone Installation Materials	
▪ Moisture Vapour / Multipurpose Adhesive / Specialised Adhesive .....	6
▪ Waterproofing Membrane .....	7
▪ Slurry Bond Coat/Thin Bed Method / Spot Bonding .....	8
▪ Grouting / Sealant .....	9
▪ Tile & Stone Façade Systems .....	10
Sealant / Warranties and Certifications .....	11



Alhama Tower Kuwait City





The LATICRETE® Façade System consists of a series of installation components which provide permanent, high strength, freeze/thaw, thermal and earthquake shock resistant exterior tile, brick or stone façades.

For over 65 years, the LATICRETE System has provided the latest technology in construction materials and methods to deliver superior performance.

### THE COMPONENTS OF THE SYSTEM INCLUDE:

- High strength adhesives providing a high safety factor to resist gravity, wind and seismic movement loads; and flexibility to accommodate movement from thermal shock, moisture expansion and shrinkage drying of substrates
- A waterproofing membrane which reduces transmission of cracks through the facade, eliminating water leakage and reducing efflorescence
- Grout jointing materials formulated for high bond strength and flexibility to prevent cracking; they are durable enough to resist deterioration from exposure to sun, freeze/thaw cycling, pollution, ozone, and facade maintenance regimens

### SINGLE SOURCE SYSTEMS APPROACH FOR FAÇADES

- LATICRETE Polymer Fortified Adhesives provide greater bond strength than AS ISO 13007.1&2 requirements.
- LATICRETE Polymer Fortified Adhesives and Grouts provide superior resistance to extreme environmental conditions and seismic activity
- Single source provider of key accessory items such as waterproofing and underlayments
- Proven for all climates — arctic to tropics
- Safe, easy-to-install products with water cleanable formulas which reduce labour, material and maintenance costs

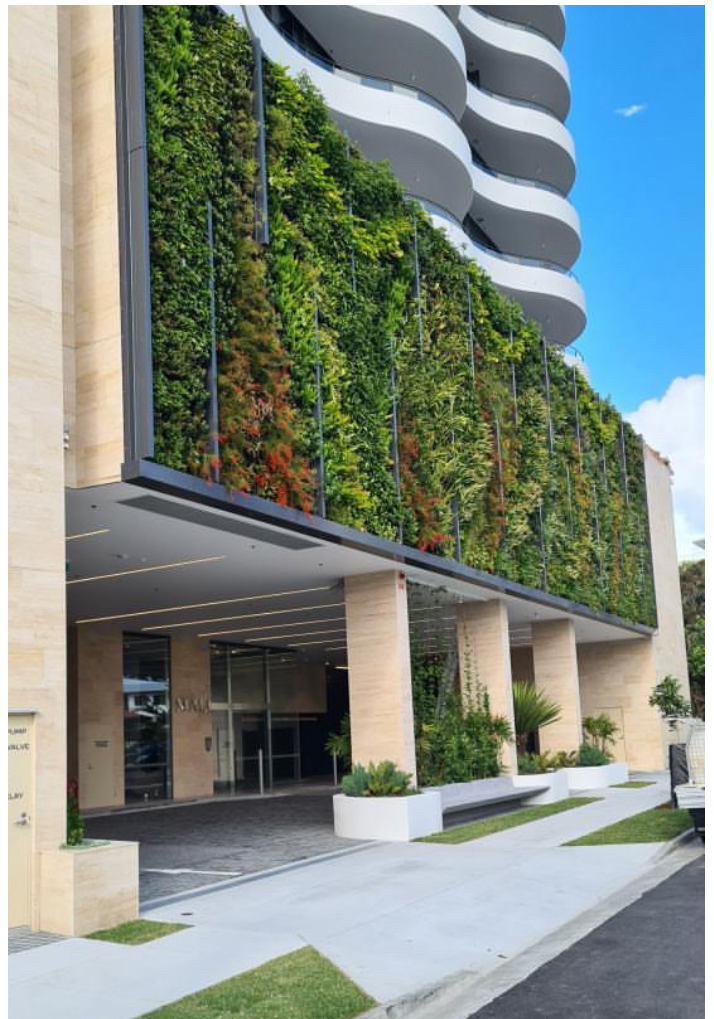
Credit: Project completed by Top Floor Tiling, QLD, Australia using LATICRETE installation materials

## IN ADDITION, THE LATICRETE® SYSTEM PROVIDES:

- Permanent installations — problem-free
- Technical services — we will help your architectural staff with proper specifications, samples and details
- Job site assistance — our global sales network assures that you will have on-site assistance when and where you need it
- Global availability — LATICRETE materials and services are available worldwide
- Guaranteed — written labour and materials warranty



LATICRETE Polymer Fortified Adhesives and Grouts provide superior resistance to extreme environmental conditions and seismic activity.



Credit: Project completed by Top Floor Tiling, QLD, Australia using LATICRETE installation materials

## LATICRETE offers the best warranties IN THE INDUSTRY

With a LATICRETE® System Warranty you can enjoy peace of mind with high-quality, world renowned LATICRETE products. When selecting the installation system for your project, consider the value and peace of mind that a LATICRETE warranty can bring.

LATICRETE provides comprehensive warranties covering commercial, residential, and industrial projects around the world. However, our best guarantee is over 60 years of experience with industrial, commercial and residential installations in every imaginable climate.

LATICRETE New Zealand warrants that LATICRETE products will be free from manufacturing defects and will not break down or deteriorate when installed in accordance with LATICRETE written specification and guidelines.

Our warranty for a defect or failure of a system under this system warranty is limited to the cost of replacing the specific portion of the System that has been proven to be defective, including the cost of the System, finishing materials and labour. Proof of purchase will be required. Warranties are not transferable or assignable.

This warranty does not cover any defects caused by an accident, misuse, abuse, improper installation, lack of reasonable care, unauthorised modification, tampering or attempt to repair by a person not authorised by the original applicator; or any product that has been used for purpose other than its intended use.

For these limited warranties to apply, the applications that comprise the installation must be performed with the products listed in the particular chart for each application (refer to the charts on this page).



Ceramic mosaic facade, Crown St Sydney, NSW, Australia



LATICRETE 25 YEAR WARRANTY SYSTEM	
APPLICATION	PRODUCTS
<b>Skim Coat</b>	254 Adhesive
<b>Render</b>	3701 Mortar Admix mixed with <ul style="list-style-type: none"> <li>226 Thick Bed Mortar</li> </ul>
<b>Moisture Shield</b>	LATAPOXY® Moisture Shield; or, HYDRO BAN® SLURRY
<b>Waterproofing/Crack Isolation</b>	HYDRO BAN Waterproof Membrane HYDRO BAN Fillet & Sealant
<b>Thin Bed Adhesive</b>	MVIS® Veneer Mortar, 254 Adhesive, LATAPOXY 300 Adhesive 4237 Latex Additive mixed with <ul style="list-style-type: none"> <li>211</li> </ul>
<b>Grouts</b>	PERMACOLOR® Grout; or, PERMACOLOR Select^
<b>Sealant</b>	LATASIL™ (and LATASIL 9118 Primer)

LATICRETE 15 YEAR WARRANTY FOR STEEL AND WOOD-FRAMED	
APPLICATION	PRODUCTS
<b>Skim Coat</b>	254 Adhesive
<b>Moisture Shield</b>	LATAPOXY Moisture Shield; or, HYDRO BAN SLURRY
<b>Waterproofing/Crack Isolation</b>	HYDRO BAN Waterproof Membrane HYDRO BAN Fillet & Sealant
<b>Thin Bed Adhesive</b>	MVIS Veneer Mortar, 254 Adhesive, LATAPOXY 300 Adhesive 4237 Latex Additive mixed with <ul style="list-style-type: none"> <li>211</li> </ul>
<b>Grouts</b>	PERMACOLOR Grout; or, PERMACOLOR Select^
<b>Sealant</b>	LATASIL (and LATASIL 9118 Primer)

LATICRETE 15 YEAR SPOT BONDING WARRANTY SYSTEM	
APPLICATION	PRODUCTS
<b>Spot Bonding Adhesive</b>	LATAPOXY 310 Stone Adhesive Standard and Rapid grade
<b>Grouts</b>	PERMACOLOR Grout; or, PERMACOLOR Select^
<b>Sealant</b>	LATASIL (and LATASIL 9118 Primer)

\*United States Invention Patent No.: 6881768 (and other Patents).

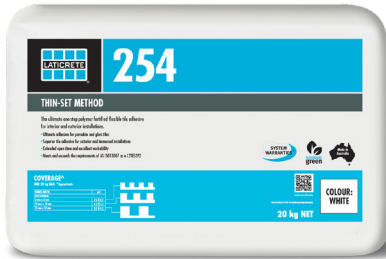
^United States Invention Patent No.: 6,784,229 (and other Patents)

See [nz.laticrete.com/document-library#filterdocuments\\_documenttypes=Warranties](http://nz.laticrete.com/document-library#filterdocuments_documenttypes=Warranties) for complete warranty information.

## SKIM COAT

### 254 ADHESIVE

See Data Sheet DS-1166



254 is the ultimate one-step, polymer fortified, thin-set adhesive suitable for thin levelling and skimming. 254 adhesive, designed to just mix with water, has a long open time with unsurpassed adhesion and workability.



## RENDER

### 3701 MORTAR ADMIX / 226 THICK BED MORTAR

See Data Sheet DS-1046 and DS-1050



3701 Mortar Admix is designed to mix with 226 Thick Bed Mortar to make a high strength mortar for renders, screeds, levelling beds and concrete patches where heavy duty performance is required. Can also be added to cement based adhesives and unmodified grouts to improve their performance characteristics. A proven performer.



## MOISTURE SHIELD

### LATAPOXY® MOISTURE SHIELD

See Data Sheet DS-1176



LATAPOXY® Moisture Shield is a two component, roller applied, breathable epoxy coating specifically designed to reduce moisture vapour emissions in concrete and other substrates. Use over dry and damp concrete and other masonry substrates to reduce the moisture vapour emission rate (MVER) in substrates to facilitate the installation of membranes, tiles, vinyl, timber, adhesives or other floor covering that require protection from moisture.



### HYDRO BAN® SLURRY

See Data Sheet DS-1259



HYDRO BAN® SLURRY is a cement based, one component, polymer fortified material that mixes with water and easily applies with brush, roller or trowel. This product can be used on retaining walls, water features, slabs on ground and immersed installations where water resistance or protection from substrate moisture is required. HYDRO BAN SLURRY is suitable for areas requiring negative hydrostatic pressure resistance up to 2.5 BARS and positive hydrostatic pressure up to 5 BARS.



## WATERPROOFING / CRACK ISOLATION

### HYDRO BAN®

See Data Sheet DS-1036



HYDRO BAN® is a thin waterproofing and anti-fracture membrane that combines optimum performance and unmatched productivity. Our improved formula is rapid drying allowing for a faster time to tile and flood test after final cure. Backed by a LATICRETE System Warranty up to 25 years\*\*, HYDRO BAN does not require the use of fabric in the field, covers or corners and bonds directly to drains and pipe penetrations. Save yourself time and money, and complete your installations faster with greater ease. This product is specifically formulated to meet today's Green Building Standards and has excellent adhesion on a wide variety of substrates. Meets and exceeds the requirements of AS4858 and AS4654.1.

### HYDRO BAN FILLET AND SEALANT

Refer to Data Sheet: DS-1196



HYDRO BAN Fillet and Sealant is a one component, fast curing, hybrid elastomeric adhesive and sealant. This product is specifically formulated to meet today's Green Building Standards and has excellent adhesion on a wide variety of substrates. Particularly for use under HYDRO BAN Waterproof Membrane as a transition fillet and crack filler.

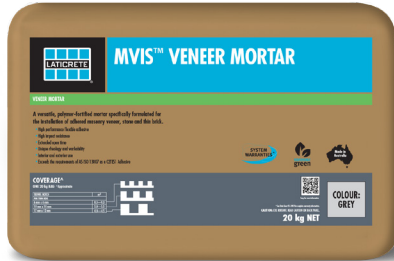


Community College of Southern Nevada, Las Vegas, NV

## THIN BED ADHESIVE

### MVIS™ VENEER MORTAR

Refer to Data Sheet: DS-1076

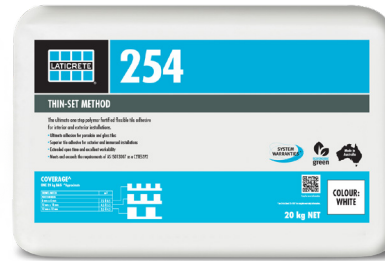


MVIS™ Veneer Mortar is a patented, versatile polymer fortified adhesive mortar designed specifically for the installation of adhered masonry veneer, stone and thin brick. A high performance mix provides maximum non-sag performance for vertical installations and also obtains maximum bond strength to the substrate and selected veneers. Masonry Veneer Mortar offers exceptional workability.



### 254 ADHESIVE

See Data Sheet DS-1166



254 is the ultimate one-step, polymer fortified, thin-set adhesive for interior and exterior installation of ceramic tile, reduced thickness porcelain, stone, quarry tile, pavers and brick. 254 adhesive, designed to just mix with water, has a long open time with unsurpassed adhesion and workability.



### LATAPOXY® 300 ADHESIVE

Refer to Data Sheet: DS-1047



LATAPOXY® 300 Adhesive is a chemical resistant, epoxy adhesive that will bond to most sound, clean surfaces. The adhesive spreads easily and cleans with water while fresh. A 100% solid, 3-part epoxy adhesive for installations of quarry tile, porcelain, brick, and packing house tile. Superior strength and workability. Prevents curling of water sensitive marbles and agglomerates. Will not stain white or light-coloured stone.



### 4237 LATEX ADDITIVE/211

See Data Sheet DS-1064 and DS-1079



4237 Latex Additive is a specially designed additive for use with 211 to make a high strength latex thin bed and medium bed adhesive up to 15 mm bed thickness. For installing all types of ceramic, stone & agglomerates. Guaranteed proven performance and increase productivity.







## SPOT BONDING ADHESIVE

### LATAPOXY® 310 STONE ADHESIVE

See Data Sheet DS-1042



LATAPOXY® 310 Stone Adhesive is a two component, high strength construction epoxy adhesive for spot bonding large format tile and stone on vertical surfaces, for either interior or approved exterior applications. Available in a standard 45 minute set version or a rapid 5 minute version, LATAPOXY 310 Stone Adhesive offers major advantages over mechanical anchoring, plaster and wire, and the thin-set method of veneer installation. The first advantage is speed of installation, which increases productivity and lowers labour costs. Secondly, LATAPOXY 310 Stone Adhesive is much easier to work with when compared to traditional methods – drilling, cutting of kerfs or setting of pins into a stone is not required. Plus, LATAPOXY 310 Stone Adhesive allows for quick and easy plumb adjustment while the stone is in place to compensate for uneven walls and thickness variations in the stone. Finally, LATAPOXY 310 Stone Adhesive is permanent — it will not fail or deteriorate over time, thus providing a dependable and beautiful installation for life.



## GROUTS

### PERMACOLOR® GROUT<sup>^</sup>

See Data Sheet DS-1041



PERMACOLOR® Grout<sup>^</sup> is a high performance grout that provides a grout joint that is dense, hard and durable. PERMACOLOR Grout is colour consistent. Mix only with water. Used for non-absorbent and vitreous type tile used in swimming pools, spas, and fountains. PERMACOLOR Grout provides a dense, hard and durable grout joint.

<sup>^</sup>United States Invention Patent No.: 6784229 (and other Patents)



### PERMACOLOR® SELECT

See Data Sheet DS-1162



PERMACOLOR® Select is an advanced high performance cement grout that offers the industry's first dispersible dry pigment solution. Designed for virtually all types of residential and commercial installations and offers optimum performance on the most demanding exterior or interior applications. Easy to mix, grout and clean, PERMACOLOR Select is fast setting and does not require sealing. <sup>^</sup>United States Invention Patent No.: 6,784,229 (and other Patents).

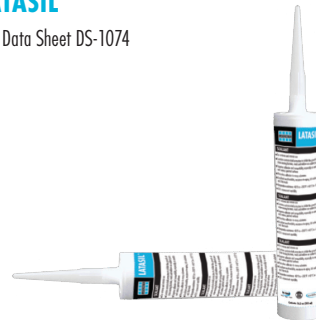


Project: Central Park, USA

## SEALANT

### LATASIL™

See Data Sheet DS-1074



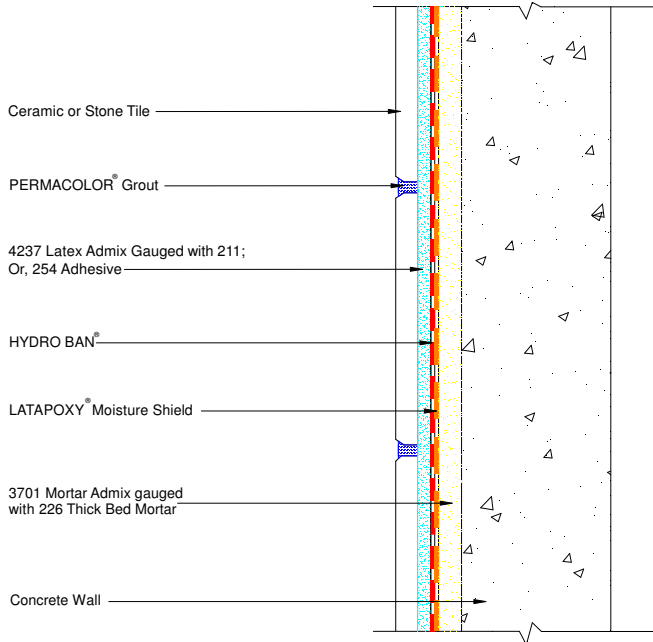
LATASIL™ sealant is a high performance, one component, neutral cure, 100% silicone sealant designed for ceramic tile and stone applications. Meets ASTM C290 Type S, Grade NS, Class 25, Use I, M & G. Equipped with fungicides to resist mould and mildew growth. Resistant to pool chemicals. Has excellent movement capacity - 25% extension and compression for movement joints. Use with LATASIL 9118 Primer in immersed installation and with porous stone.



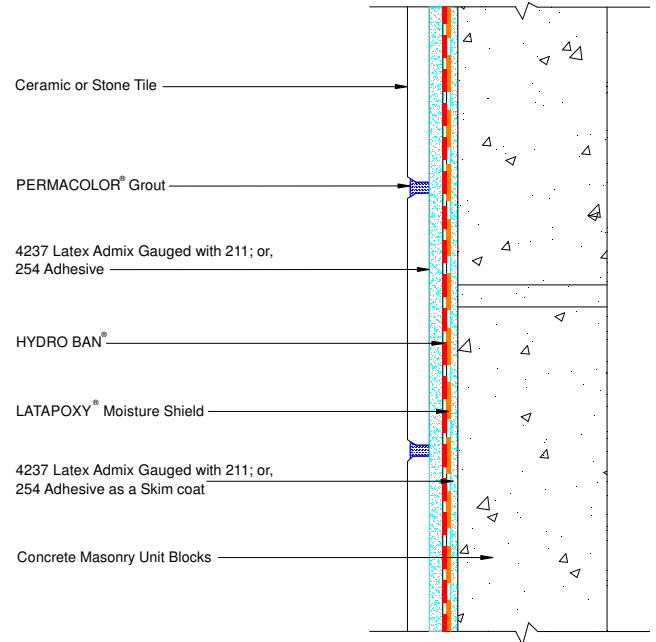
LATASIL™ is designed for durability and long life, especially in wet areas. LATASIL will not crack, soften in the joints nor stain natural stone.

## DETAILS\*

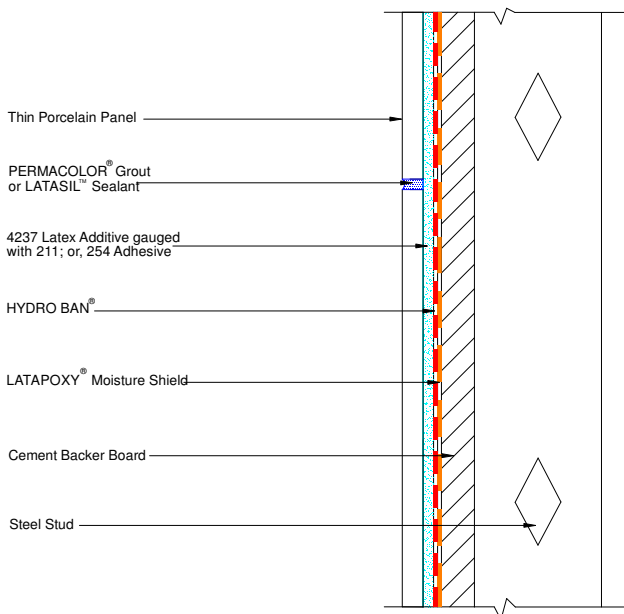
### DETAIL 1



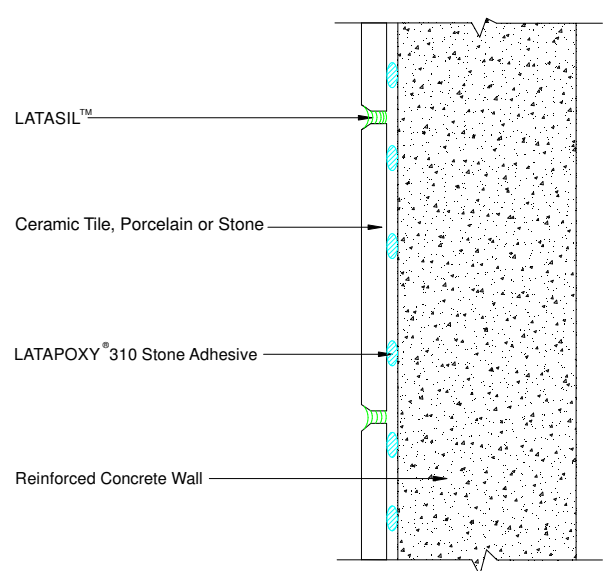
### DETAIL 2



### DETAIL 3



### DETAIL 4



\*These details are not for construction. Contact LATICRETE for more information.



## COMPLETE SYSTEM WARRANTIES



With a LATICRETE® System Warranty you will enjoy peace of mind with high quality, globally proven LATICRETE products. When selecting the installation system for your ceramic or stone tile project consider the value and peace of mind that LATICRETE experience, expertise and warranty will bring.

LATICRETE provides comprehensive warranties covering commercial, residential, and industrial projects around the world. However, our best guarantee is over 65 years of experience with industrial, commercial and residential installations in every imaginable climate around the world.

Consult LATICRETE for complete warranty information for your particular project.

Refer to the LATICRETE Warranty Data Sheet DS-1126 for additional information.

## GREENGUARD Certified & LOW VOC LEED COMPLIANT

Many companies might say their products are low VOC, only one independently certifies it – LATICRETE.

- UL GREENGUARD® Environment Certification, Certified to Meet Stringent Indoor Air Quality Standards
- Certified to UL GREENGUARD Gold Standards
- Helps Contribute Toward LEED Certification
- Product Certifications Readily Available at [www.laticrete.com/green](http://www.laticrete.com/green)



### CERTIFICATION

LATICRETE materials are certified by independent laboratories throughout the world to meet or exceed applicable industry standards/norms; including DIN, ANSI, AS, NCP, UEAtc, JIS, ASTM, UPC®, ICC, IAPMO, and ISO.

#### In Addition, Approvals Include:

- CSIRO Australia
- Board of Standards and Appeals, New York City
- Campden Food Research Corporation,

United Kingdom

- Ceramic Tile Institute of America
- CSTB, France
- CETEC
- EMPA Swiss Federal Institute of Building Research
- GREENGUARD Certification
- International Association of Plumbing and Mechanical Officials (#3524)
- International Conference of Building Officials

- Lloyd's Register of Shipping
- London Underground
- Ministry of Public Works, England
- Ministry of Defense, England
- Underwriters Laboratories, Inc (Classified)





by Clancy Constructions, VIC, Australia using LATAPOXY® 310 Stone Adhesive



LATICRETE New Zealand Ltd | 3/118 Asquith Avenue, Mount Albert, Auckland 1023 New Zealand | +64 9 394 1900 | nz.laticrete.com

05-1113-0824 ©2024 LATICRETE New Zealand Ltd | All trademarks shown are the intellectual properties of their respective owners.

