



For The Builders of  
A Better World

# Thin Brick Tile Façade Installation Systems

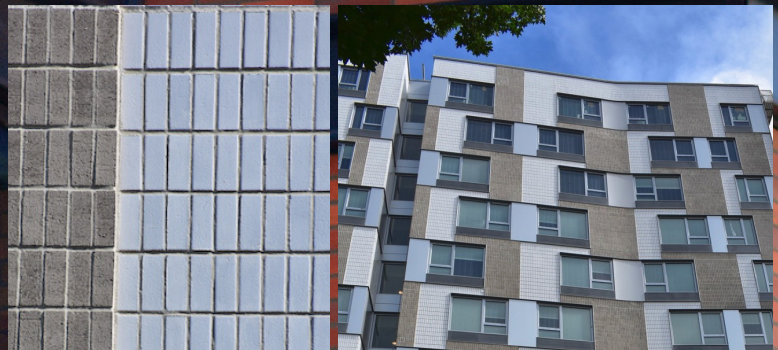


Snap for more  
information.

**Interior   Exterior   Commercial   Residential**

Credit: Project: Louisa Flowers Building, Portland, Oregon  
Project completed by: B&B Tile and Masonry using a full LATICRETE Installation System.

Components of the Thin Brick Tile Façade Installation System.....	3
LATICRETE Thin Brick Tile Façade System Warranty.....	4
Thin Brick Tile Façade Installation Materials	
▪ Multipurpose Adhesive / Specialised Adhesive .....	5
▪ Moisture Vapour / Waterproofing Membrane .....	6
▪ Thin Bed Method .....	7
▪ Grouting / Sealant.....	8
▪ Cleaning & Sealing .....	9
Thin Brick Tile Façade Details.....	10
Thin Brick Tile Façade Projects.....	11



Louisa Flowers Building, USA



The LATICRETE® Thin Brick Tile Façade System consists of a series of installation components which provide permanent, high strength, freeze/thaw, thermal and earthquake shock resistant thin brick façades. For over 65 years, the LATICRETE System has provided the latest technology in construction materials and methods to deliver superior performance.

## THE COMPONENTS OF THE SYSTEM INCLUDE:

- Render and skim coat products to dimensionally correct surfaces for the installation.
- A waterproofing, anti-fracture, and crack suppression system that helps reduce efflorescence.
- Load bearing, high strength deformable, shock resistant adhesives. Superior resistance to differential movement resulting from drying shrinkage as well as thermal and moisture expansion.
- Durable crack and fade resistant grouts that can be pointed. Available in a wide range of designer colours.
- High performance, elastometric silicone sealers suitable for ceramic and stone tile. Stain and mould resistant. Available in a wide range of designer colours.

## A HISTORY OF INNOVATIVE SOLUTIONS

For over 65 years, LATICRETE has been committed to research and development of innovative installation products, building a reputation for superior quality, performance and customer service. LATICRETE methods, materials, and technology have been field and laboratory proven by Architects, Engineers, Contractors and Owners. Offering an array of low VOC and sustainable products, LATICRETE products contribute to LEED certification, exceed commercial/residential VOC building requirements, and are backed by the most comprehensive warranties in the industry.

## IN ADDITION, THE LATICRETE® SYSTEM PROVIDES:

- Problem free, permanent installations
- Technical services – we will help your architectural staff with proper specifications, samples and details
- Job site assistance – our global technical sales representative network assures that you will have on-site assistance when and where you need it
- Global availability – LATICRETE materials and services are available worldwide
- Guaranteed – written labour and materials warranty

## LATICRETE offers the best warranties IN THE INDUSTRY

With a LATICRETE® System Warranty you can enjoy peace of mind with high-quality, world renowned LATICRETE products. When selecting the installation system for your project, consider the value and peace of mind that a LATICRETE warranty can bring.

LATICRETE provides comprehensive warranties covering commercial, residential, and industrial projects around the world. However, our best guarantee is over 65 years of experience with industrial, commercial and residential installations in every imaginable climate.

LATICRETE New Zealand warrants that LATICRETE products will be free from manufacturing defects and will not break down or deteriorate when installed in accordance with LATICRETE written specification and guidelines.

Our warranty for a defect or failure of a system under this system warranty is limited to the cost of replacing the specific portion of the System that has been proven to be defective, including the cost of the System, finishing materials and labour. Proof of purchase will be required. Warranties are not transferable or assignable.

This warranty does not cover any defects caused by an accident, misuse, abuse, improper installation, lack of reasonable care, unauthorised modification, tampering or attempt to repair by a person not authorised by the original applicator; or any product that has been used for purpose other than its intended use.

For these limited warranties to apply, the applications that comprise the installation must be performed with the products listed in the particular chart for each application (refer to the charts on this page).



Prestige Plaza, USA



LATICRETE 25 YEAR WARRANTY SYSTEM	
APPLICATION	PRODUCTS
<b>Skim Coat</b>	254 Adhesive
<b>Render</b>	3701 Fortified Mortar Bed
<b>Moisture Shield</b>	LATAPOXY® Moisture Shield; or, HYDRO BAN® SLURRY
<b>Waterproofing/Crack Isolation</b>	HYDRO BAN Waterproof Membrane HYDRO BAN Fillet & Sealant
<b>Thin Bed Adhesive</b>	MVIS® Veneer Mortar, 254 Adhesive, LATAPOXY 300 Adhesive 4237 Latex Additive mixed with ■ 211
<b>Grouts</b>	PERMACOLOR® Grout; or, PERMACOLOR Select^
<b>Sealant</b>	LATASIL™ (and LATASIL 9118 Primer)
<b>Cleaning &amp; Sealing</b>	STONETECH® BulletProof® Sealer STONETECH KlenzAll™ Cleaner

LATICRETE 10 YEAR WARRANTY FOR STEEL AND WOOD-FRAMED	
APPLICATION	PRODUCTS
<b>Skim Coat</b>	254 Adhesive
<b>Moisture Shield</b>	LATAPOXY Moisture Shield; or, HYDRO BAN SLURRY
<b>Waterproofing/Crack Isolation</b>	HYDRO BAN Waterproof Membrane HYDRO BAN Fillet & Sealant
<b>Thin Bed Adhesive</b>	MVIS Veneer Mortar, 254 Adhesive, LATAPOXY 300 Adhesive 4237 Latex Additive mixed with ■ 211
<b>Grouts</b>	PERMACOLOR Grout; or, PERMACOLOR Select^
<b>Sealant</b>	LATASIL (and LATASIL 9118 Primer)
<b>Cleaning &amp; Sealing</b>	STONETECH BulletProof Sealer STONETECH KlenzAll Cleaner

\*United States Invention Patent No.: 6881768 (and other Patents).

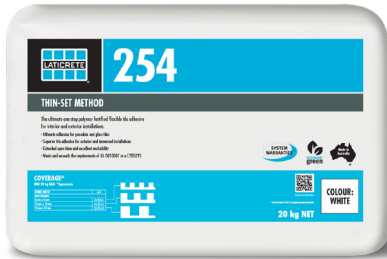
^United States Invention Patent No.: 6,784,229 (and other Patents)

See [nz.laticrete.com/document-library#filterdocuments\\_documenttypes=Warranties](http://nz.laticrete.com/document-library#filterdocuments_documenttypes=Warranties) for complete warranty information.

## SKIM COAT

### 254 ADHESIVE

See Data Sheet DS-1166



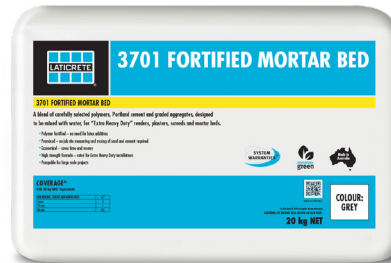
254 is the ultimate one-step, polymer fortified, thin-set adhesive suitable for thin levelling and skimming. 254 adhesive, designed to just mix with water, has a long open time with unsurpassed adhesion and workability.



## RENDER

### 3701 FORTIFIED MORTAR BED

See Data Sheet DS-1000



3701 Fortified Mortar Bed is a polymer fortified blend of carefully selected polymers, Portland cement and graded aggregates. 3701 Fortified Mortar Bed does not require the use of latex admix, you only need to add water to produce thick bed mortar with exceptional strength.



## MOISTURE SHIELD

### LATAPOXY® MOISTURE SHIELD

See Data Sheet DS-1176



LATAPOXY® Moisture Shield is a two component, roller applied, breathable epoxy coating specifically designed to reduce moisture vapour emissions in concrete and other substrates. Use over dry and damp concrete and other masonry substrates to reduce the moisture vapour emission rate (MVER) in substrates to facilitate the installation of membranes and tile installation materials.



### HYDRO BAN® SLURRY

See Data Sheet DS-1259



HYDRO BAN® SLURRY is a cement based, one component, polymer fortified material that mixes with water and easily applies with brush, roller or trowel. This product can be used on retaining walls and other walls where protection from substrate moisture is required. HYDRO BAN SLURRY is suitable for areas requiring negative hydrostatic pressure resistance up to 2.5 BARS and positive hydrostatic pressure up to 5 BARS.



## WATERPROOFING / CRACK ISOLATION

### HYDRO BAN®

See Data Sheet DS-1036



HYDRO BAN® is a thin waterproofing and anti-fracture membrane that combines optimum performance and unmatched productivity. Our improved formula is rapid drying allowing for a faster time to tile and cure. Backed by a LATICRETE System Warranty up to 25 years\*\*, HYDRO BAN does not require the use of fabric in the field, coves or corners and bonds directly to drains and pipe penetrations. Save yourself time and money, and complete your installations faster with greater ease. This product is specifically formulated to meet today's Green Building Standards and has excellent adhesion on a wide variety of substrates. Meets and exceeds the requirements of AS4858 and AS4654.1.



### HYDRO BAN FILLET AND SEALANT

Refer to Data Sheet: DS-1196



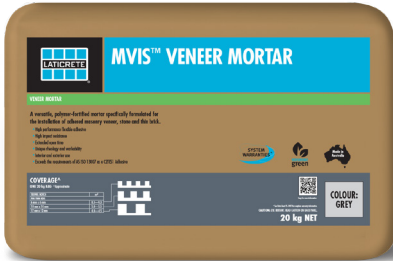
HYDRO BAN Fillet and Sealant is a one component, fast curing, hybrid elastomeric adhesive and sealant. This product is specifically formulated to meet today's Green Building Standards and has excellent adhesion on a wide variety of substrates. Particularly for use under HYDRO BAN Waterproof Membrane as a transition fillet and crack filler.



## THIN BED ADHESIVE

### MVIS™ VENEER MORTAR

Refer to Data Sheet: DS-1076

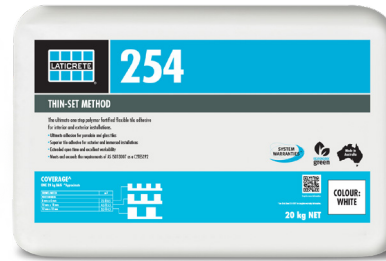


MVIS™ Veneer Mortar is a patented, versatile polymer fortified adhesive mortar designed specifically for the installation of adhered masonry veneer, stone and thin brick. A high performance mix provides maximum non-sag performance for vertical installations and also obtains maximum bond strength to the substrate and selected veneers. Masonry Veneer Mortar offers exceptional workability.



### 254 ADHESIVE

See Data Sheet DS-1166



254 is the ultimate one-step, polymer fortified, thin-set adhesive for interior and exterior installation of ceramic tile, reduced thickness porcelain, stone, quarry tile, pavers and brick. 254 adhesive, designed to just mix with water, has a long open time with unsurpassed adhesion and workability.



### LATAPOXY® 300 ADHESIVE

Refer to Data Sheet: DS-1047



LATAPOXY® 300 Adhesive is a chemical resistant, epoxy adhesive that will bond to most sound, clean surfaces. The adhesive spreads easily and cleans with water while fresh. A 100% solid, 3-part epoxy adhesive for installations of brick, ceramic, and stone tile. Superior strength and workability. Prevents curling of water sensitive marbles and agglomerates. Will not stain white or light-coloured stone.



### 4237 LATEX ADDITIVE/211

See Data Sheet DS-1064 and DS-1079



4237 Latex Additive is a specially designed additive for use with 211 to make a high strength latex thin bed and medium bed adhesive up to 15 mm bed thickness. For installing all types of brick, ceramic and stone tile. Guaranteed proven performance and increase productivity.



## GROUTS

### PERMACOLOR® GROUT<sup>^</sup>

See Data Sheet DS-1041



PERMACOLOR® Grout<sup>^</sup> is a high performance grout that provides a grout joint that is dense, hard and durable. PERMACOLOR Grout is colour consistent. Mix only with water. Used for pointing brick tile. PERMACOLOR Grout provides a dense, hard and durable grout joint.

<sup>^</sup>United States Invention Patent No.: 6784229 (and other Patents)



### PERMACOLOR® SELECT

See Data Sheet DS-1162



PERMACOLOR® Select is an advanced high performance cement grout that offers the industry's first dispersible dry pigment solution. Designed for virtually all types of residential and commercial installations and offers optimum performance on the most demanding exterior or interior applications. Easy to mix, grout and clean, PERMACOLOR Select is fast setting and does not require sealing. <sup>^</sup>United States Invention Patent No.: 6,784,229 (and other Patents).



Project: Louisa Flowers Building, USA

## SEALANT

### LATASIL™

See Data Sheet DS-1074



LATASIL™ sealant is a high performance, one component, neutral cure, 100% silicone sealant designed for ceramic tile and stone applications. Meets ASTM C290 Type S, Grade NS, Class 25, Use I, M & G. Equipped with fungicides to resist mould and mildew growth. Resistant to pool chemicals. Has excellent movement capacity - 25% extension and compression for movement joints. Use with LATASIL 9118 Primer in immersed installation and with porous stone.



LATASIL™ is designed for durability and long life, especially in wet areas. LATASIL will not crack, soften in the joints nor stain natural stone.



## SEALING

### STONETECH® BULLETPROOF SEALER

See Data Sheet DS-11198



STONETECH® BulletProof® Sealer is an advanced sealer, designed to provide maximum protection on nature stone against the toughest oil and water-based stains.



## CLEANING

### STONETECH® KLENZALL™ CLEANER

See Data Sheet DS-1204



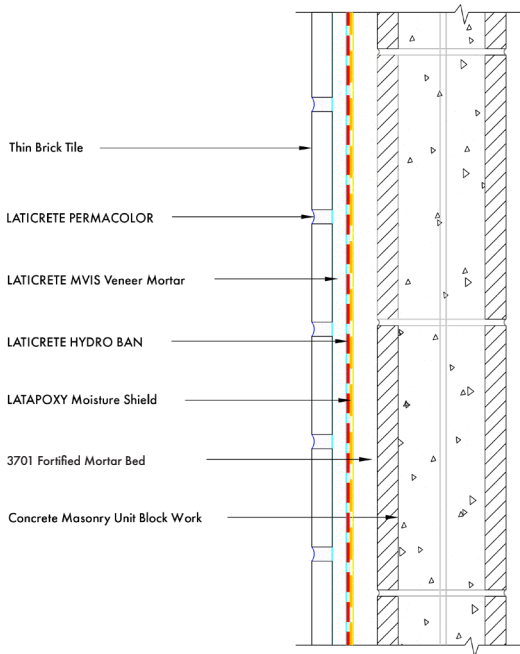
STONETECH® KlenzAll™ Cleaner is a heavy duty cleaner made to clean the toughest soils on natural stone and tile.



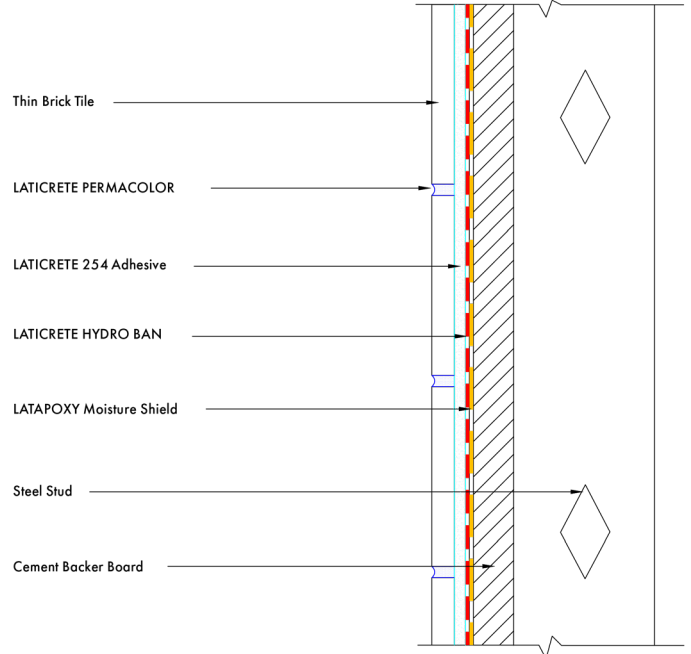
Project: Louisa Flowers Building, USA

## DETAILS\*

### DETAIL 1



### DETAIL 2



\*These details are intended to be used in conjunction with a LATICRETE specification or LATICRETE Technical Service consultation.



## 2021 – LA MAMA THEATRE RENOVATION, NSW



**SUBCONTRACTORS:** A & R Durran Bricklaying.  
**ARCHITECT:** Cottee Parker Architects.

**MATERIAL SUPPLIER:** Chroma Group.

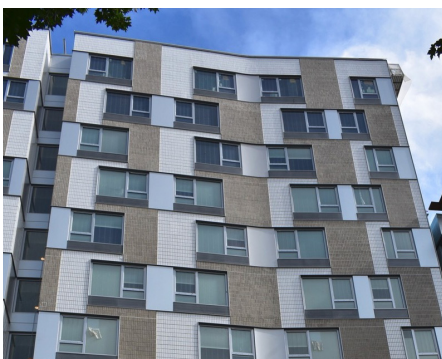
## 2021 – CHILLER PLANT DISTRICT COOLING STATION, USA



**BUILDER:** Creative Contractors.  
**ARCHITECT:** Baker Barrios Architects.  
**CONTRACTOR:** Masonry Builders Inc.

**DISTRIBUTOR:** FSS Company.  
**MATERIAL SUPPLIER:** Marion Ceramics.

## 2023 – LOUISA FLOWERS BUILDING, USA



**LOCATION:** Portland, Oregon, USA.  
**ARCHITECT:** LEVER Architecture & LRS Architects.  
**BUILDER:** O'Neil Walsh Community Builders.

**SUPPLIER:** Mutual Materials Company.  
**INSTALLER:** B&B Tile and Masonry.



Chiller Plant, Tampa. By Masonry Builders, Inc. Using a LATICRETE MVIS™ System



LATICRETE New Zealand Ltd | 3/118 Asquith Avenue, Mount Albert, Auckland 1023 New Zealand | +64 9 394 1900 | [nz.laticrete.com](http://nz.laticrete.com)

DS-1284-0824 ©2024 LATICRETE New Zealand Ltd | All trademarks shown are the intellectual properties of their respective owners.

