



# Commercial Installation Systems

## Hospitality





LATICRETE International, Inc. World Headquarters, Bethany CT



“Our global reach allows us to be a local company in every community we serve, providing unmatched performance and support while remaining on the forefront of trendsetting developments.”

— David A. Rothberg, Chairman of LATICRETE

# Our Company

---

LATICRETE is a third-generation family-owned, customer-focused, worldwide manufacturer of green flooring and facade materials, used in residential, commercial and industrial applications.

For nearly seven decades, we have provided technology, products and services for the construction market worldwide – making innovative, permanent installations and repairs.

Architecturally specified and professionally endorsed, we offer a dedication to quality with globally proven solutions for virtually every flooring, waterproofing and facade application.

Partner with trusted and experienced LATICRETE Sales Specialists dedicated to help provide you with everything needed from a comprehensive system warranty package to superior service.

As we continually aim to set benchmarks for quality and innovation, the company has grown to employ a workforce of nearly 2,000 associates worldwide and operates in and distributes to every continent. We have eight plants in the United States including our headquarters in Connecticut, and also have facilities in Brazil, United Arab Emirates, China, India, Singapore, Australia, Norway, Italy, Mexico and Costa Rica.



## Global Project Experience

---

LATICRETE® system solutions have been used in the most prestigious and most demanding buildings in the world, from the One World Trade Center and the metro transit systems in **New York City** to the world's tallest buildings including the Burj Khalifa in **Dubai** and the Petronas Towers

in Kuala Lumpur, **Malaysia**. The Olympic swimming pools in Beijing were all done with the LATICRETE system, as was the dramatic Marina Bay infinity pool that sits atop a 50-story tower in **Singapore**. No other manufacturer in the world has this track record.

No other manufacturer in the world  
has this track record.



# Successful Partners

---

## **LATICRETE has dedicated Strategic Account Specialists for every vertical market we serve.**

Supported by technical field representatives who are proactive in preconstruction planning and jobsite installation training, we will work closely with your supply chain and logistics teams to support a successful installation with unmatched performance.

Our LATICRETE professionals work directly with your construction teams, general contractors and subcontractors to provide installation best practices while delivering real value by saving time and labor with products that are safer and faster than traditional solutions.

### **Services Include**

- Specification consulting
- Detailed drawings
- Product mock-ups
- Value-add product bundling
- LEED support
- Project tracking
- Supply chain logistics
- Local and national technical support
- Industry-leading warranties
- Worldwide availability
- Training and education

### **Vertical Markets We Serve**

- Healthcare
- Senior Living
- Multifamily
- Residential
- Hospitality
- Education
- Retail
- Convenience Store
- Restaurants
- Automotive
- Fitness Centers



## Single Source 25 Year System Warranty Available



Scan for warranty information.

Your Strategic Account Specialist will advise and build a product system package to maximize the strength and longevity of your warranty.†

## Product Specific EPDs and HPDs

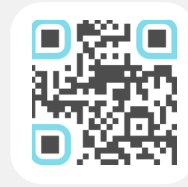
We are committed to manufacturing products that meet or exceed the requirements of green construction standards to promote a safe and healthy environment for everyone.



Scan to download documents.

It's our goal to provide maximum disclosure so design teams and building owners can make more informed decisions when it comes to choosing what products go into their projects.

## LEED Project Certification Assistant



Scan for LEED information.

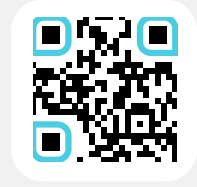
Specifying tile and stone installation materials for projects seeking LEED certification is now faster and easier than ever before. Visit [www.laticrete.com/green](http://www.laticrete.com/green), or scan QR code.

## Contact Us For

- Full CSI Approved, 3-Part Written Specifications
- CAD Details
- BIM Objects Library
- ANSI Standard Product Selector
- Database of TCNA Methods and Installation Types
- Technical and Safety Data Sheets

For direct inquiries please email us at:

[hospitality@laticrete.com](mailto:hospitality@laticrete.com)



Scan to email.



## LATICRETE Architectural Guidebook

Speed up the specification process using our online resource tool as your one stop source for all our products and installation systems specific to your project specification requirements. Create custom specifications based on industry standards for over 100 types of installations in just a few steps. [laticrete.com/ag](http://laticrete.com/ag)



Scan for Architectural Guidebook

Also available in all formats from our industry partners:



# Building System Solutions

Since 1956, LATICRETE has been at the forefront of the industry, leading with pioneering advancements that redefine high-performance tile and stone installation systems and building finishing solutions. We strive to empower architects and construction professionals worldwide with top-notch support and building material solutions.

Reliable time-tested classics to groundbreaking innovations, our extensive product portfolio offers superior quality and unbeatable support. We are fully committed to a complete system approach, and our offerings align seamlessly with CSI specification sections.

## Tile & Stone Installation Systems



### CSI Division 9

Ensure a successful installation each and every time with the most comprehensive assortment of innovative tile and stone installation materials available worldwide. Our industry-leading products offer complete system solutions from the substrate up through the grout for virtually any type of tile or stone installation in commercial, industrial, and residential applications.

Product categories include surface preparation, waterproofing, shower systems, sound control, anti-fracture, floor heating, adhesive mortars, grouts, sealers, cleaners, profiles & trims — all designed to work together, providing a comprehensive installation solution.

## Shower Installation Systems



### CSI Division 9

The HYDRO BAN® shower system provides everything needed for a worry-free installation. As a single-source supplier for shower installation systems, we offer waterproof membranes, shower pans, benches, niches and drains all with the trusted performance expected from the HYDRO BAN waterproofing line.

Complete your shower by choosing from our adhesives, grouts, sealants and caulks for a beautiful installation that is backed by the industry's best warranty.

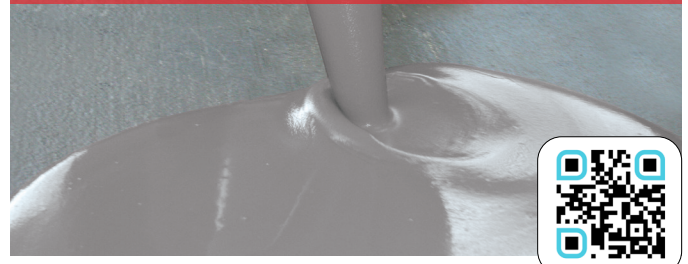
## Radiant Floor Heating



### CSI Division 9

The STRATA\_HEAT™ floor heating system is the most advanced radiant floor heating system available in the world. Consisting of a high-performance floor heating wire, an uncoupling mat, two Wi-Fi enabled thermostats and the world's first heat conductive thin-set additive — the system provides you with the most advanced and efficient floor heating system for your next installation.

## Concrete & Substrate Preparation

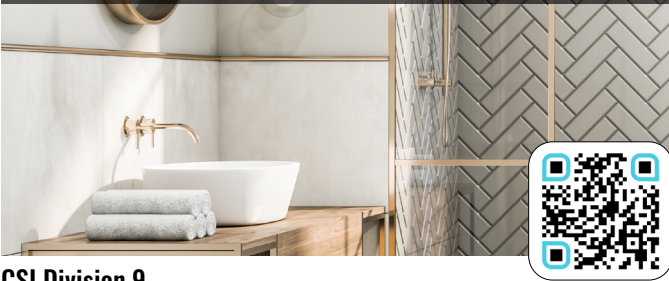


### CSI Division 3 & 9

A quality finished floor starts with a properly prepared surface – one that guarantees a long-lasting, durable installation. Our time-tested surface preparation products are formulated to preserve quality by protecting installations from water vapor transmission, sound transmission and cracks. They are able to provide a perfectly level and flat substrate to accommodate a variety of floor finishes including vinyl, wood, carpet and tile.

When combined with the SUPERCAP® System, a high-volume, time-saving delivery system that can pump material up to 50 stories high, you can expect predictable quality results. L&M™ curing and sealing treatments, floor hardeners, densifiers, polished concrete systems further ensure your floors are safe, resilient, and easy to maintain.

## Profiles & Trims



### CSI Division 9

Whether looking for a sleek, modern look or a more traditional design, this line offers the flexibility and versatility to achieve any aesthetic in commercial and residential applications. Available in aluminum, stainless steel, brass, and PVC, these profiles and trim pieces are crafted with the utmost precision, to create premium-quality and a consistent appearance from piece to piece.

Our profiles and trims can protect tile edges and enhance safety all while providing a decorative finishing touch to any room. The comprehensive line includes expansion joints, corner protection, stair nosing, edging, and flashing – and is compatible with various finishes such as tile, carpet, vinyl, wood, and more.

## Adhered Façade & Wall Finish Systems



### CSI Division 4 & 7

Keep up with the increasing popularity of adhered masonry veneers. Trust your installations to a complete productivity-boosting system designed to deliver superior, long-term performance on masonry projects of all types including residential, commercial, and industrial applications.

Unlike traditional methods and materials, our Masonry Veneer Installation System (MVIS™) is engineered to create permanent, high-strength installations that use a revolutionary waterproofing technology to protect against weather and water intrusion, as well as provide freeze/thaw stability. MVIS is designed for thin-brick, manufactured stone and natural stone veneers for interior and exterior applications.

## Tile, Stone & Surface Care



### CSI Division 9

Reliable and high-performing surface care solutions branded STONETECH®, is designed to clean, protect, restore and enhance. Highly effective at preventing oil, water and stain damage, this range offers natural-look sealers that protect porous stone and tile surfaces but do not alter the surface appearance as well as enhancing sealers that can revive the color or finish of a surface all while protecting.

STONETECH cleaners ranging from daily to heavy duty, problem-solving solutions will eliminate everyday spills and restore the appearance without harming the intended surface. Preserve the beauty of stone, tile, and grout with STONETECH.

## Resinous Coating & Floor Finish Systems



### CSI Division 3 & 9

Offer unparalleled integral colors, textures, and finishes with high-performance coatings, overlayments, and restoration solutions that give owners exceptionally attractive, durable floors. With the SPARTACOTE® system, the decorative finishes allow you to deliver vivid color and gloss with high impact and wear resistance, quick turnaround, and low maintenance.

**Hotel guests deserve the very best a hospitality brand can offer.** In both front-of-house and back-of-house, cleanliness and durability cannot be overemphasized.

Maintaining appearance while withstanding continuous and frequent use is required. From guestrooms and baths to public areas, food prep, service areas, dining rooms, spas, gyms, swimming pools and fountains — all are customer experience encounters that reflect the value and trust a brand provides.

Properties must be fresh, clean and on trend in every way. Renovations must have rapid turnarounds with minimum disruption to guests and owners. Installing professional-grade LATICRETE® products supports your hotels' promise to deliver the very best, every day.

# Hospitality

---









**Exterior and Interior Stone Facades**

**Adhered Façade & Wall Finish Systems (MVIS)**

- Seamless air and water barrier for masonry, tile, stone, and brick

**Guestrooms and Bathrooms**

**Public Restrooms**

**Laundry and Maintenance**

**Tile & Stone Installation Systems**

- Sound Control Systems
- Steam Room System
- Waterproofing System

**Shower Installation Systems**

**Radiant Floor Heating System**

**Resinous Coating & Floor Finish Systems**

**Lobbies, Receptions and Hallways**

**Tile & Stone Installation Systems**

- Fountain Installation System

**All Subfloors**

**Concrete & Substrate Preparation**

- NXT® Moisture Mitigation
- NXT Surface Preparation
- NXT Decorative Overlays
- SUPERCAP® SLU Bulk Delivery System

# Proven Installation Systems for Hospitality



## Pools, Plazas and Patio Decks

### Tile & Stone Installation Systems

- Pool and Spa Tile System
- Pool Installation Systems
- Plaza and Deck Installation System

### Resinous Coating & Floor Finish Systems

For direct inquiries please email:  
[hospitality@laticrete.com](mailto:hospitality@laticrete.com)

## Commercial Kitchens

Café, Food Prep and Storage

Restaurant Dining Areas

### Tile & Stone Installation Systems

- Waterproofing System

### Resinous Coating & Floor Finish Systems

- SPARTACOTE® Seamless Urethane Flooring

### Tile & Stone Installation Systems

- Sound Control Systems

Adhered Façade & Wall Finish Systems (MVIS™)

## Spa and Steam Rooms

Locker Rooms

Fitness Centers

### Tile & Stone Installation Systems

- Steam Room System
- Submerged Pool Installation
- Waterproofing System

Adhered Façade & Wall Finish Systems (MVIS)

### Resinous Coating & Floor Finish Systems

### Shower Installation Systems

# LATICRETE® Product System Installation Reference

## Vapor Reduction Systems



### VAPOR BAN™ Primer ER

- All-In-One Moisture Vapor Barrier and Primer Applied in One-Step
- No sand broadcast or primer needed, turns 2 steps into 1
- Ready for SLU or finished flooring in 3-4 hours
- Saves time and labor
- Easy-to-use with hardwood, vinyl, rubber, carpet, tile and stone

## Self-Leveling and Underlayment Systems



### NXT® Primer

- Deep penetrating formula maximizes bond strength
- Multi-purpose and can be used on a wide range of substrates

### NXT Level Plus

- High quality cement based self-leveling underlayment for use in leveling interior plywood, OSB, gypsum and concrete substrates
- Install from 1/8" – 1 1/4" (3–32 mm) in a single lift
- Apply directly over concrete with RH of 100% or less per ASTM F2170
- Fiber-reinforced

## Sound Control



### 170 & 170.5 Sound & Crack Isolation Mat

- This acoustical floor underlayment muffles impact noises through ceramic tiles, stone and other hard surfacing materials while protecting tile from crack disfiguration
- Comprised of 89% post-consumer recycled content\*, it contributes to LEED credits, is eco-friendly and GREENGUARD certified

- 170.5 has a Delta IIC rating of 22 per ASTM 2179 Delta Impact Insulation Class exceeds code requirement through independent testing
- With an IIC rating of 50, it is approved for Commercial Use per the International Building Code

### 125 TRI-MAX®

- Provides incredible sound isolation protection while simultaneously protecting the tile or stone finish from any cracking by reducing the transmission of stresses in the substrate through to the tile or stone finish
- Lightweight, easy to use, fiber reinforced producing a stronger bond
- Equipped with anti-microbial technology

## Epoxy Adhesives



### LATAPOXY® 300 Adhesive

- Ideal for installing moisture sensitive marble and agglomerate tiles
- Maximum chemical resistance
- Superior bond strength

### LATAPOXY BIOGREEN™ 300 Adhesive

- Made with biobased, sustainable materials
- Ideal for installing moisture sensitive marble and agglomerate tiles
- Maximum chemical resistance
- Superior bond strength

### LATAPOXY 310 Stone Adhesive

- A two component, high strength epoxy adhesive, which is formulated for the spot bonding method of tile and stone installations on vertical surfaces
- Fast Permanent Bond—45 minutes to 1 hour set time
- Easy to Use—1:1 mixing ratio by volume
- Non-Staining—ideal for white and light colored marbles, other stones and tiles
- Non-Sag—when applied up to 1" (25 mm) thick
- Rapid version available for faster curing



## Profiles & Trims

- An unmatched offering of over 4,000 profiles and trim pieces
- Broad range of materials, finishes and colors in a multitude of shapes and sizes
- German-engineered and manufactured



## Membranes



### FRACTURE BAN™

- Provides anti-fracture/sound reduction in one convenient easy to install product
- Prevents in plane cracks up to 3/8" (9.5 mm)
- Achieves an extra heavy commercial rating ideal for interior installations such as shopping malls, retail stores, offices, hospitality, and multi-family
- Available in 2 different thicknesses: 40 mil and 90 mil

## Silicone Sealants



### LATASIL™

- 100% silicone sealant
- Matches all 40 grout colors and clear
- Resistant to pool chemicals

### LATASIL 9118 Primer

- Used for all pool/submerged applications

## Masonry Veneer Installation System (MVIS)™



### MVIS™ Air & Water Barrier

- Single component, load bearing, fluid applied membrane
- Designed for use as a waterproofing, crack isolation, and air barrier behind most exterior wall claddings
- Excellent bond strength to a wide variety of substrates
- Exceeds ICC-ES AC 212

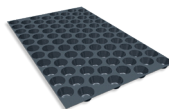
### MVIS Veneer Mortar

- For interior and exterior installation of adhered masonry veneer, natural stone, and thin brick
- Exceeds ASTM C270 compressive strength requirements for masonry veneer installations

### MVIS Premium Pointing Mortar

- Ideal for floors and walls (joint widths 1/4"– 1/2" [6.35 mm –12 mm])
- Designed for exterior and interior use
- Provides a joint that is dense, hard and durable
- Available in 9 colors

## Plaza & Deck System



### Tile Drain Mat

- Protects the tile installation from water damage and frost heaving
- Thin & lightweight, reduces dead load by 50%

## HYDRO BAN® Shower Installation Systems



### HYDRO BAN®

- Liquid applied, thin waterproofing membrane that combines performance and productivity
- Anti-fracture protection of up to 1/8" (3 mm) over shrinkage and other non-structural cracks
- Bonds directly to most commonly used material

### HYDRO BAN Board

- Lightweight, ready to tile wall board
- IAPMO approved – for steam showers/rooms as single membrane
- Works in conjunction with LATICRETE® tile and stone installation materials
- Board thicknesses range from 1/4" to 2" (6.35 mm to 50.8 mm)

### HYDRO BAN Sheet Membrane

- ASTM E96/E96M Procedure E-0.06 Perms, and IAPMO approved – for steam showers/rooms as single membrane
- Complete line of accessories – such as seam tape and inside and outside corners

### HYDRO BAN Pre-Formed Benches, Seats and Niches

- Waterproof and ready to tile
- Lightweight and durable
- Easy to install with LATICRETE premium setting materials

### HYDRO BAN Pre-Sloped Shower Pans

- Factory installed, code approved waterproofing meets IAPMO-PS-46 and ANSI A118.10 requirements
- Comes with a factory installed drain/waste line connection and drain assembly
- Pre-sloped, ready-to-tile pan

### HYDRO BAN Bonding Flange Drain

- Eliminates pre-slope and primary shower pan for a faster installation
- Compatible with 3701 Mortar Bed and HYDRO BAN® providing a complete waterproof assembly
- Bonding flange available in both ABS and PVC

### HYDRO BAN Linear Drain

- Low profile design is ideal for large format tile and stone
- Allows for placement along walls and intermediate locations
- Adjustable grate height allows for range of tile or stone thicknesses
- Available in a number of different sizes and finishes

## Grouts



### PERMACOLOR®

- Improved stain resistance
- Consistent color
- Fast setting
- Equipped with Microban® antimicrobial product protection
- Ideal for residential and commercial applications

### PERMACOLOR Select\*

- No sealing required – equipped with STONETECH® Sealer Technology
- Fast setting – ready for foot traffic in as little as 3 hours
- Equipped with Microban® antimicrobial product protection
- Available in 40 colors plus top competitor colors
- Also available in over 10,000 colors with the PERMACOLOR Select ANYCOLOR™ program
- Available in non-sanded option (PERMACOLOR Select\* NS)

## Thin Bed Mortars



### 254 Platinum Plus

- The ultimate, lightweight, polymer fortified, thin-set mortar that is ideal for the installation of Gauged Porcelain Tile (GPT) and Gauged Porcelain Tile Panels/slabs (GPTP), porcelain and glass tile as well as exterior and submerged applications
- Contains no respirable crystalline silica levels that exceed the OSHA action level\*

### 254 Platinum

- Premium, polymer-fortified, thin-set mortar that provides unsurpassed strength and versatility
- Ideal for interior, exterior and submerged applications on virtually all substrates and applications

## Premium Mortar Bed



### 3701 Fortified Mortar

- Premixed – no job site blending of powders required
- High strength formula

### 3701 Lite Fortified Mortar

- Lightweight
- Silica Free

## Epoxy Grouts



### SPECTRALOCK® 1

- Strongest pre-mixed grout on the market – Meets ANSI A118.3\*
- Outperforms traditional pre-mixed grouts currently available
- Locks in color and blocks out stains
- Available in all 40 LATICRETE colors
- Features built-in Microban® antimicrobial product protection

### SPECTRALOCK PRO Premium Grout†

- Use in interior and exterior – perfect for fully submerged applications
- Easy to install: Never needs sealing
- Stainproof and chemical resistant
- Available in 40 colors
- Equipped with Microban® antimicrobial product protection

### SPECTRALOCK 2000 IG

- Highly chemical resistant industrial grade epoxy grout
- Recommended for industrial applications and commercial kitchens
- Maximum physical strength
- Features built-in Microban® antimicrobial product protection that fights the growth of mold and mildew on grout surface

## Large Heavy Tile Mortars



### MULTIMAX™ LITE

- The ultimate, lightweight, polymer fortified, Large and Heavy Tile mortar for interior, exterior and submerged installation of ceramic tile, porcelain tile, glass tile, stone, quarry tile, pavers and brick
- Features maximum non-sag performance on walls and maximum buildup of up to 3/4" (19 mm) without shrinkage on floors
- Contains no respirable crystalline silica levels that exceed the OSHA action level\*

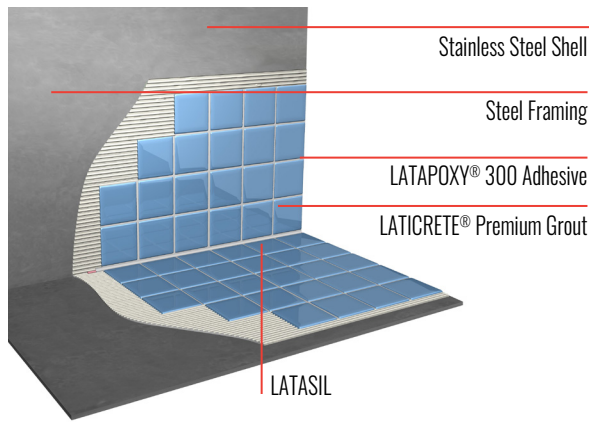
### TRI-LITE™

- High-performance, lightweight, tri-purpose mortar designed for Large and Heavy Tile, thin-bed and wall applications
- Superior non-sag, non-slump performance
- For interior and exterior applications

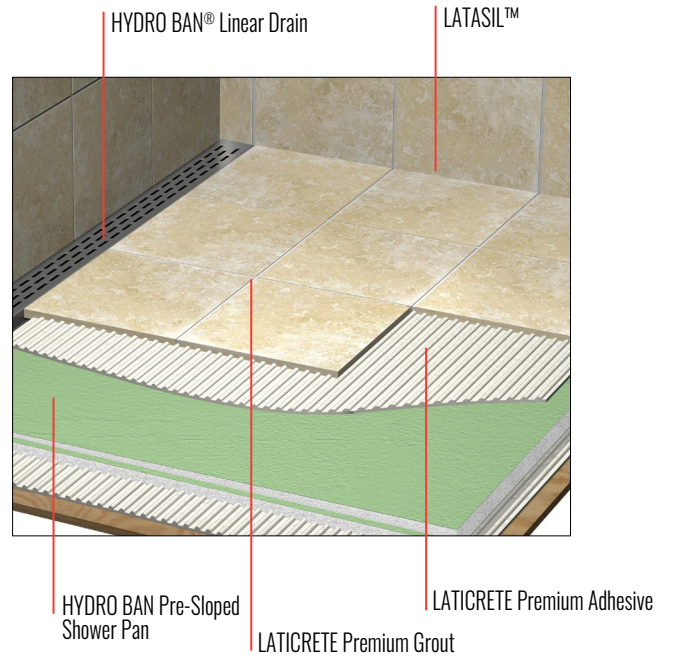
\*Patent Pending. †United States Patent No.: 6,891,769 (and other Patents). ‡United States Patent No.: 6,784,229 B2 (and other Patents). §See DS 025.0 for complete warranty information. \*\*See DS 230.99 for complete warranty information. \*OSHA action level set forth in OSHA's Respirable Crystalline Silica (RCS) standard for construction, 29 CFR 1926.1153, as tested by an independent laboratory to be below the OSHA action level for respirable crystalline silica - see [laticrete.com/silica](http://laticrete.com/silica). †Microban® antimicrobial technology protects the treated article against mold and mildew deterioration. Antimicrobial technology is not designed to replace normal cleaning practices or protect users.

# System Applications

## Wet Areas and Continuous Submersion System

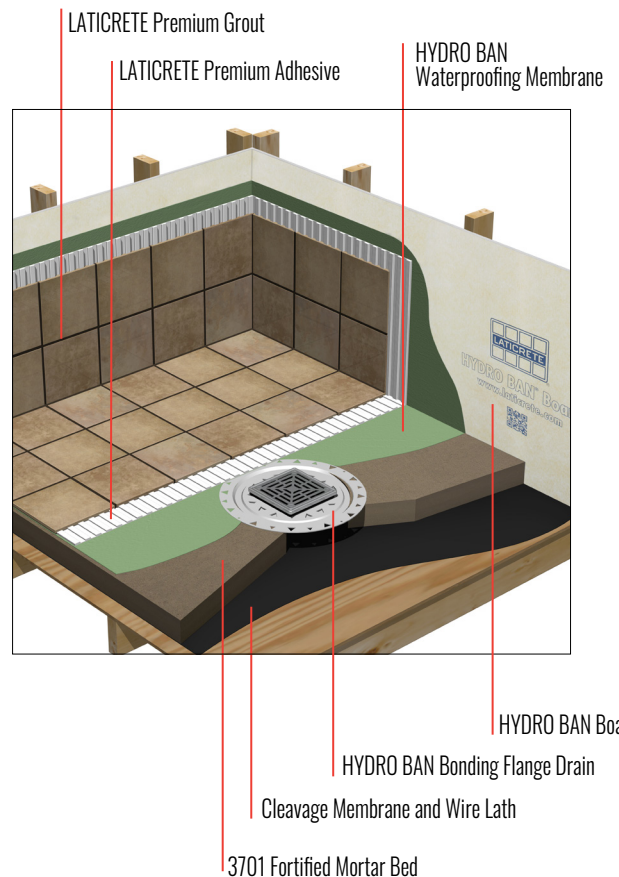
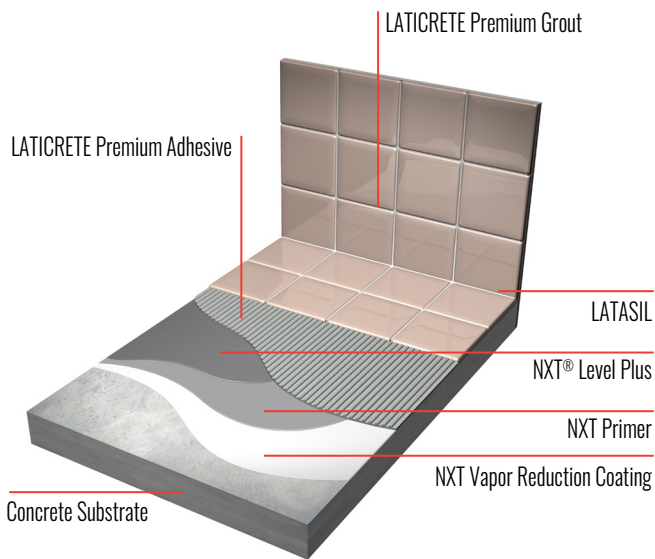


## HYDRO BAN® Shower Installation Systems

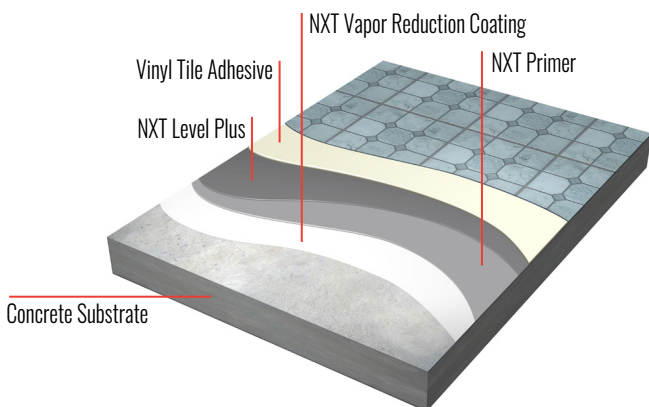


## Vapor Reduction Systems

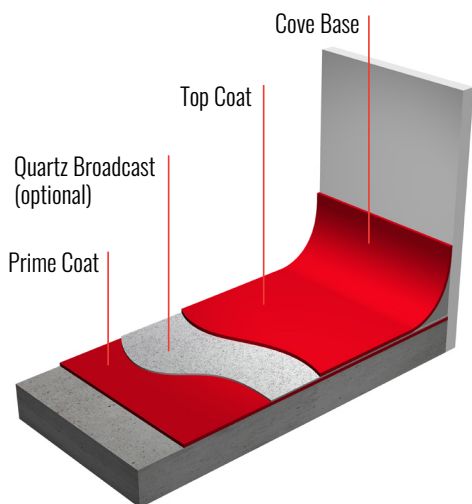
### Tile and Stone System



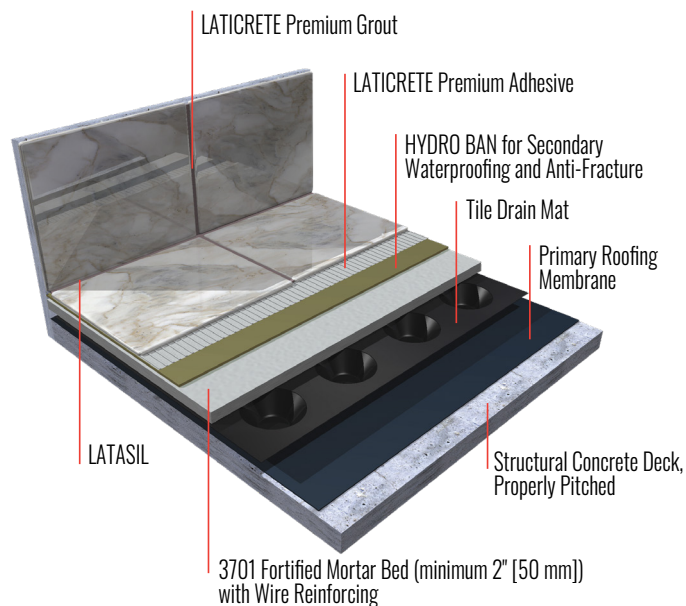
### Vinyl Adhesive System



## SPARTACOTE® Urethane Cement



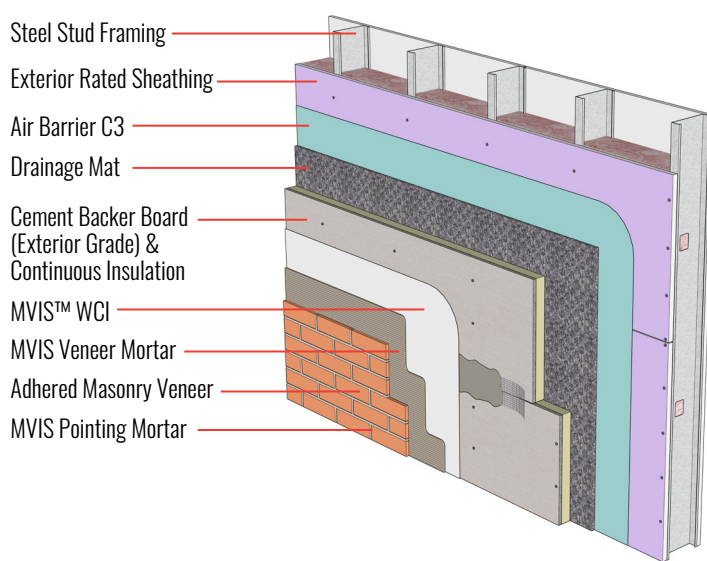
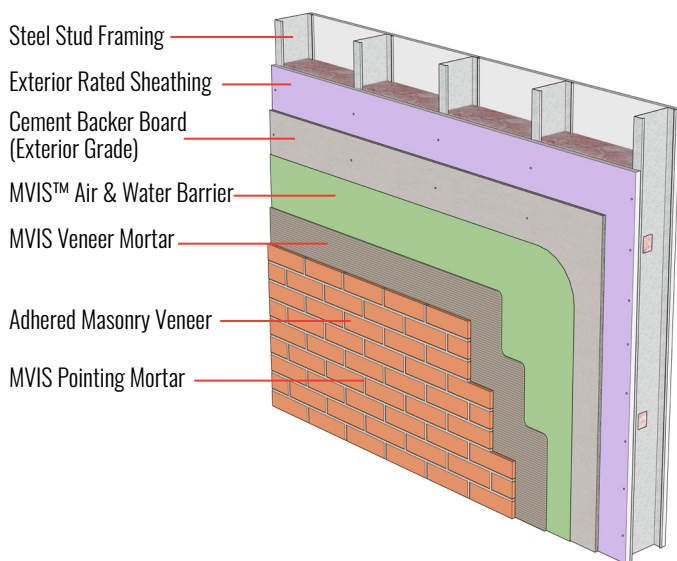
## Plaza and Deck System



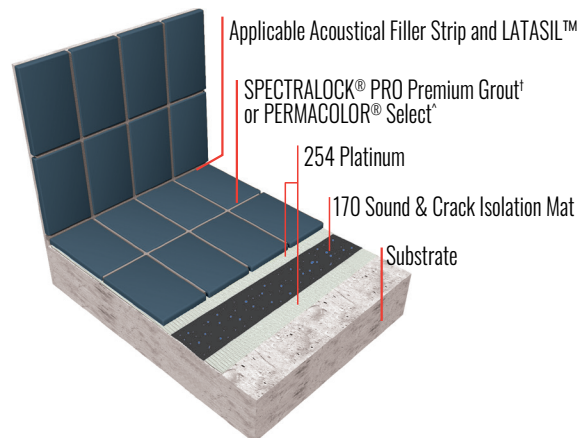
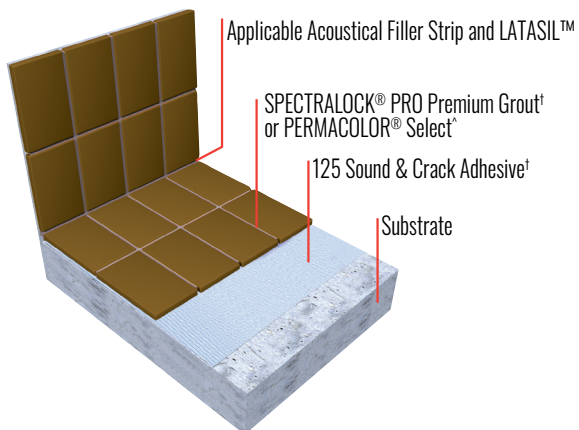
## Masonry Veneer Installation Systems (MVIS™)

### Exterior wall

Concrete wall direct adhered with fluid applied air and water barrier



## Sound Control System



For direct inquiries please scan or email:  
hospitality@laticrete.com



TWA Hotel at  
JFK Airport, New York



LATICRETE International, Inc. ■ One LATICRETE Park North, Bethany, CT 06524-3423 USA ■ 1.800.243.4788 ■ +1.203.393.0010 ■ [www.laticrete.com](http://www.laticrete.com)

DS-10090-1123 ©2023 LATICRETE International, Inc. All trademarks shown are the intellectual properties of their respective owners.