



# Proven Installation Systems for Commercial Kitchens and Food and Beverage Environments



- Worldwide availability
- Industry standard
- On-site technical service
- Systems warranties

Globally Proven Construction Solutions

For over 60 years, LATICRETE has led the industry with pioneering advancements—developing high-performance building materials for national account partners, architects and construction professionals worldwide. From time-tested to innovative, our broad product portfolio provides superior quality and value. We are fully committed to innovation, growth, and a complete system approach.

## Resinous/Decorative Finishes

Offer unparalleled integral colors, textures, and finishes with high-performance coatings, overlayments, and restoration solutions that give owners exceptionally attractive, durable, decorative floors. LATICRETE decorative finishes allow you to deliver vivid color and gloss with high impact and wear resistance, quick turnaround, and low maintenance.

CSI Divisions 3 & 9



## Masonry Installation and Care Systems

Keep up with the increasing popularity of adhered masonry veneers. Trust your installations to a complete productivity-boosting system designed to deliver superior, long-term performance on masonry projects of all types including residential, commercial, and industrial applications.

Unlike traditional methods and materials, the Masonry Veneer Installation System (MVIS™) is engineered to provide a permanent, high-strength installation that uses a revolutionary waterproofing air and water barrier membrane to provide a barrier against air and water penetration into the structure. The MVIS is designed for thin-brick, manufactured stone and natural stone veneers for interior and exterior applications. Complementary products include paver sand, and sealers and cleaners for stone and pavers.

CSI Divisions 4 & 7

## Tile & Stone Installation and Care Systems

Ensure a successful installation each and every time with the most comprehensive assortment of innovative tile and stone installation materials available worldwide. LATICRETE® industry-leading products provide complete system solutions from the substrate up through the grout for virtually any type of tile or stone installation in commercial, industrial, and residential applications.

Product categories include surface preparation, waterproofing, sound control, anti-fracture, adhesives, grouts, sealers and cleaners, and shower system components—all designed to work together, providing a comprehensive installation.

CSI Division 9

## Concrete Construction Chemicals

Improve the long-term durability, performance, and appearance of concrete surfaces with our complete line of protection and repair solutions. Curing and sealing treatments, floor hardeners and densifiers, polished concrete systems, and stain protection products work together to ensure your concrete floor is safe, resilient, and easy to maintain.

CSI Division 3



## Commercial Kitchen Floor System

### HYDRO BAN®

- Thin load bearing waterproofing
- Bonds directly to metal, PVC and ABS plumbing fixtures
- Anti-fracture protection of up to 1/8" (3 mm) over shrinkage and other non-structural cracks
- Extra heavy service rating per TCNA performance levels
- Exceeds ANSI A118.10 and ANSI A118.12 standards
- IAPMO and ICC approved

### SPECTRALOCK® PRO Premium Grout®

- Maximum performance epoxy grout
- Available in 40 colors
- Stainproof\*\* and chemical resistant
- Easily installs on walls and front of house floors; never needs sealing
- Use in interior and fully submerged applications
- Exceeds ANSI A118.3

### SPECTRALOCK® 2000 IG

- Three part 100% solids industrial epoxy grout
- Recommended for industrial and commercial food processing applications
- Highly resistant to bacterial attack
- Chemical resistant
- Use in interior applications
- Exceeds ANSI A118.3 epoxy and ISO 13007-1 RG and A118.5 furan performance requirements

### PERMACOLOR® Select

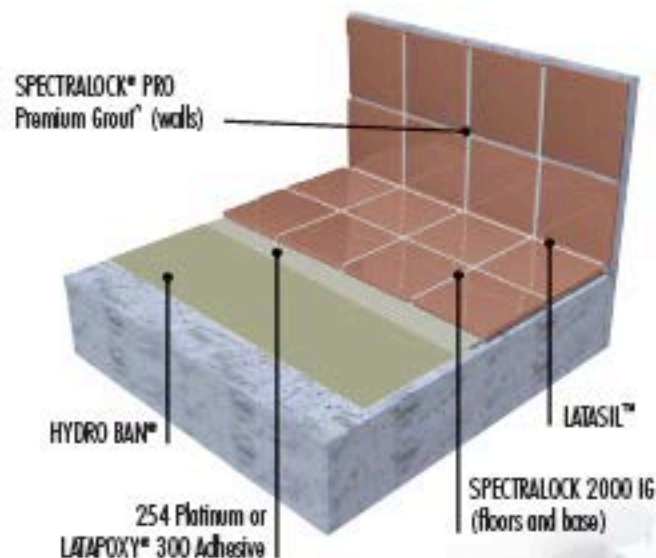
- Premium cement grout for walls and front of house floors
- Virtually eliminates batch-to-batch color variation
- Fast setting — ready for heavy foot traffic in 6 hours
- Exceeds ANSI A118.7 and ISO 13007-3 CG2WAF

### 254 Platinum

- Premium adhesive mortar suitable for interior and exterior applications
- Exceptional bond strength and easy workability
- Equipped with anti-microbial protection
- Exceeds ANSI A118.15, ANSI A118.4, and ANSI A118.11
- Meets EN 12004/C2TES1 and ISO 13007-1/C2TES1P1

### LATAPOXY® 300 Adhesive

- Superior bond strength
- Maximum chemical resistance
- Meets ANSI A118.3, EN 12004/R2, and ISO 13007-1 R2



## New and Existing Food and Beverage Processing Environments

### SPARTACOTE™ URETHANE CEMENT

- Simple 2 step installation with rapid return to service
- Exceptional durability
- Very low odor with no VOCs
- Heavy duty industrial coatings available with silver ion antimicrobial technology\*\*
- Textured or smooth finish available

\* United States Patent No. 4,881,748 (and other Patents)

\*\* StainProof (acid/alkali resistance only) in common household cleaners, liquids and other goods. Does not apply immediately to detergents, liquids, and other goods.

\*\*\* Antimicrobial technology inhibits the growth of bacteria on the coating. Antimicrobial technology is not designed to replace normal cleaning practices or protect users.

## Front of House Floor System

### L&M CURE™ (curing compound)

- Non-residual curing compound
- Recommended for use in areas where toppings or sealers are scheduled

### L&M LION HARD® (hardener densifier)

- Hardens, densifies, and dustproofs polished concrete surfaces
- Environmentally-safe, low VOC formulation
- Improves surface durability and appearance
- Easy to install

### L&M VIVID DYE™ (concrete dye)

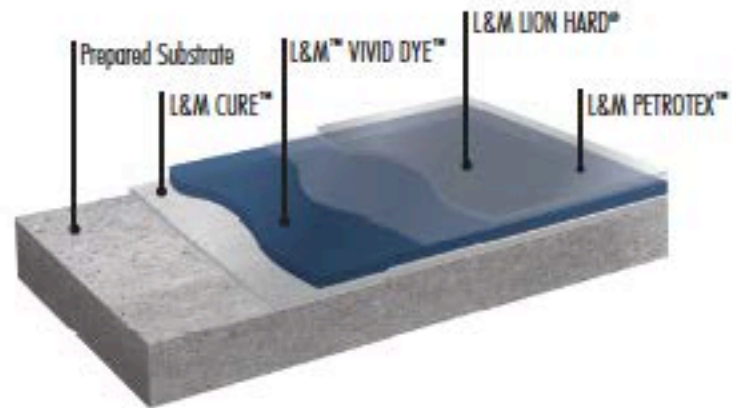
- Translucent, topical, versatile concrete dye
- Available in a variety of different colors
- Custom colors available

### L&M JOINT TITE 750™ (joint filler)

- Reduces floor maintenance costs
- Odorless
- Return to service in 60 minutes

### L&M PETROTEX™ (oil and water repellent)

- Protects concrete surfaces from water, oil, and other contaminants
- Reduces cracking and spalling



## Commercial Industrial System

### SPARTACOTE™ FLEX PURE™

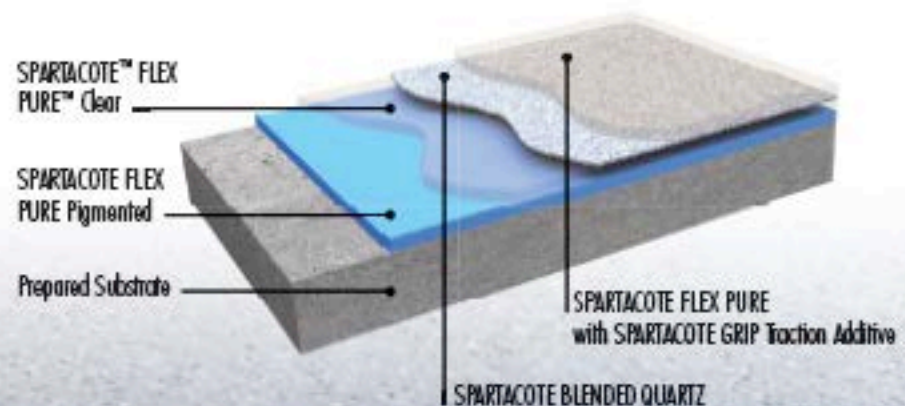
- Low VOC
- Rapid return to service
- Excellent chemical and stain resistance
- Tolerant to 300°F (149°C) for incidental heat contact

### SPARTACOTE (Blended Quartz)

- Quartz aggregate for broadcast
- Available in 10 colors
- High traction
- Easy to clean

### SPARTACOTE GRIP (Traction Additive)

- Improves flooring system traction coefficients
- Resistant to a wide range of industrial chemicals
- Available in 40, 60 and 100-mesh size



# Masonry Veneer Installation System (MVIS™)

## MVIS™ Air & Water Barrier

- Single component, load bearing, vapor permeable, fluid applied membrane
- Designed for use as a waterproofing, crack isolation, and air barrier behind most exterior wall claddings
- Excellent bond strength to a wide variety of substrates
- May contribute to overall building energy efficiency

## MVIS Veneer Mortar

- Polymer-fortified adhesive mortar
- For interior and exterior installation of adhered masonry veneer, natural stone, and thin brick
- Excellent bond strength
- High strength; fiber reinforced

## MVIS Premium Pointing Mortar

- Ideal for floors and walls (joint widths 1/4" – 1/2" [6 mm – 12 mm])
- Provides a joint that is dense, hard and durable
- Available in 9 colors



## LATASIL™

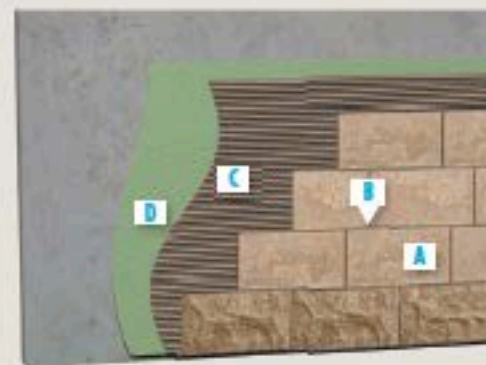
- 100% silicone sealant for use in coves, corners, changes in plane and expansion joints in exterior and interior applications
- Meets ASTM C920 and C794
- Available in 40 colors shown below, plus clear



† See Data Sheet 025.0 for complete warranty information.

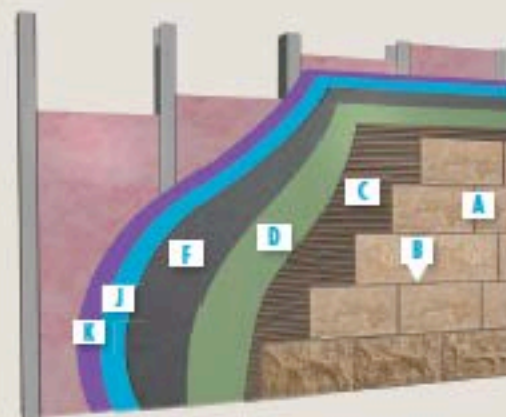
## Exterior Wall

Concrete wall direct adhered with fluid applied MVIS™ Air and Water Barrier



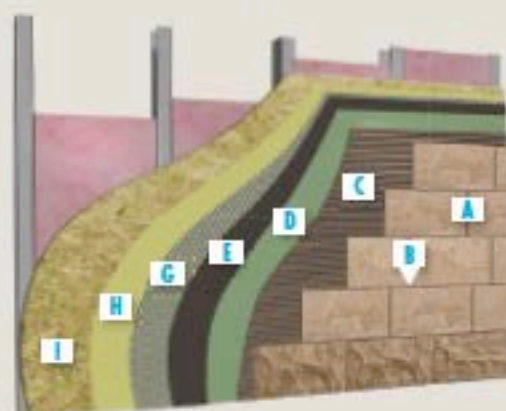
## Steel or Wood Framed Construction

Framed wall with exterior rated sheathing and cement backer board



## Steel or Wood Framed Construction

Framed wall with exterior rated sheathing and wire lath and scratch coat bond layer



- |  |                                  |
|--|----------------------------------|
| <b>A</b> Veneer                        | <b>G</b> Lath                    |
| <b>B</b> MVIS™ Premium Pointing Mortar | <b>H</b> Cleavage Membrane       |
| <b>C</b> MVIS Veneer Mortar            | <b>I</b> Sheathing               |
| <b>D</b> MVIS Air & Water Barrier      | <b>J</b> Optional Drainage Layer |
| <b>E</b> 3701 Fortified Mortar Bed     | <b>K</b> Primary Sheathing       |
| <b>F</b> Cement Board                  |                                  |



### Commercial Kitchen Floor System



### Commercial Industrial System



### Front of House Floor System

