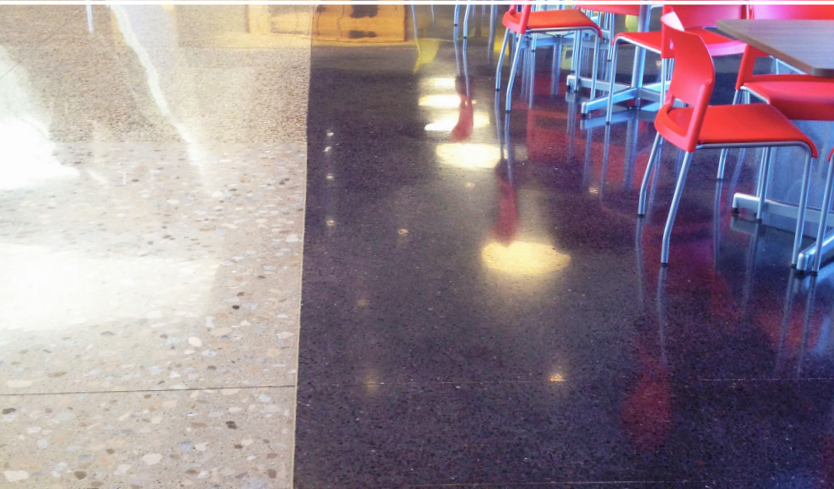
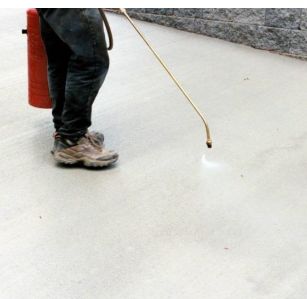




# GUIDE TO CONSTRUCTION CHEMICALS

Products for the Construction, Repair and Protection of Concrete





## CONCRETE CURING COMPOUNDS

### L&M™ CURE R™

Water-borne, ready-to-use, clear resin based membrane curing compounds. The membrane forming ability of L&M™ CURE R™ is designed to retain sufficient moisture to properly hydrate concrete placements. Available in clear and white pigmented formulations. COMPLIANCE: ASTM C309 Type 1 and 1D, Class B.

### L&M CURE W™ and W2

Water-borne, low VOC, ready-to-use wax based curing compounds. L&M CURE W™/W2 are not recommended for floors scheduled to receive subsequent treatments or toppings. Available in clear and white pigmented formulations. COMPLIANCE: ASTM C309, Class A, Type 1; AASHTO-M-148, Type 1 and Type 2.

## CURING AND SEALING COMPOUNDS

### L&M LUMISEAL FX™

A bluish resistant, non-yellowing, decorative acrylic curing and sealing compound. Recommended for interior and exterior decorative and colored concrete placements. Formulated with advanced water based, low VOC emulsion chemistry. Sprayable, low odor, resists blushing and blistering. COMPLIANCE: ASTM C309, Type 1.



### L&M LUMISEAL PLUS™

A 100% non-yellowing, very high gloss, pure acrylic cure and sealing compound. Popular sealer for colored, patterned and stamped concrete. COMPLIANCE: ASTM C309 Type 1; ASTM C1315 Type 1.

### L&M DRESS & SEAL™

Cures, seals and dustproofs concrete surfaces, effectively sealing out job site dirt, oil, and mortar drippings. Allows proper bonding of resilient tiles. Resists yellowing. Easy to apply. COMPLIANCE: ASTM C309, Type 1D; ASTM C1315, Grade B Type 1 Class A.

### L&M DRESS & SEAL WB™

General purpose water-based acrylic blend cure, sealer, low VOC. L&M DRESS & SEAL WB™ effectively cures, seals and dustproofs concrete, and assists in proper strength development. Resists yellowing. Very low odor. Easy to apply. Available in high solids formulation, L&M DRESS & SEAL WB 30. COMPLIANCE: L&M DRESS & SEAL WB: ASTM C309 Type 1 1D; L&M DRESS & SEAL WB 30: ASTM C309 Type 1 1D; ASTM C1315.



## EVAPORATION REDUCER

### L&M E-CON™

On fresh concrete, L&M E-CON™ prevents premature and rapid loss of moisture from the concrete surface. L&M E-CON effectively minimizes the negative effects of rapid drying conditions due to high temperatures, low humidity, high winds, and direct sunlight.

## FORM TREATMENTS

### L&M DEBOND® Form Coating

A high-performance, chemical release agent eliminates concrete buildup from all types of forms, in all types of weather. Excellent for wood, aluminum, and steel forms. VOC compliant, L&M DEBOND® forms a water-resistant barrier, greatly reducing form maintenance and concrete surface holes. Low odor L&M DEBOND contains no diesel fuel or fuel oil, highly refined raw materials. Reduces concrete build-up and defects.

## NON-SHRINK GROUTS

### L&M CRYSTEX®

Our "top of the line" precision, non-shrink structural grout. Designed for critical grout applications under vibrating machinery and in applications where high flow, non-shrink performance is needed. Conforms to ASTM C1107 at all temperatures and flow ranges.

### L&M DURAGROUT™

Cement-based, general use construction grout. Ideal for column base plates, anchor bolts, small equipment, and grouting concrete wall penetrations. Conforms to ASTM C1107 at a plastic and flowable consistency.

### L&M EPOGROUT 758™

Epoxy resin grout cures at normal temperatures into a tough, non-shrinking, structural grout of high chemical resistance. L&M EPOGROUT 758™ is scientifically formulated to withstand severe dynamic load shock in marine and heavy-duty industrial applications.

## LIQUID CHEMICAL HARDENERS AND DENSIFIERS

### L&M SEAL HARD™

Our "top of the line" new generation concrete chemical hardener, densifier, dust-proofer, and sealer. L&M SEAL HARD™ hardens and seals the concrete near surface wear zone better than any product in its class. L&M SEAL HARD is recommended for use on ACI Class 4, 5, and 9 (super flat) floors. USDA approved. Ten year warranty against dusting available with certified applicator.

### L&M CHEM HARD™

Hardens and dustproofs concrete surfaces by chemical reaction. This sodium silicate penetrating treatment is odorless and economical. Five year warranty against dusting.

### L&M LION HARD™

L&M LION HARD™ is a chemical hardener and densifier treatment designed to increase concrete wear resistance and surface durability. Features water saver technology.

## DRY POLISHED CONCRETE

### L&M FGS HARDENER PLUS™

Chemical hardener and densifier solution formulated to increase wear resistance and surface durability of polished concrete floors. The essential component of the FGS PermaShine Polished Concrete floor system.

### L&M FGS CONCRETE CONDITIONER™

Proprietary concrete cleaner and conditioner designed for ongoing maintenance of hardened, polished concrete floors. Highly concentrated, and specially formulated component of the FGS/PermaShine Polished Concrete floor system. Regular use reinforces surface durability and improves floor appearance.

### L&M VIVID DYE™

Our premier line of concrete dyes. Formulated using extremely fine molecules of color designed to penetrate and color any interior concrete surface. Recommended for use with the FGS/PermaShine polished concrete floor system. Can also be used as a base color or touch up for acid stained concrete or as a coloring agent itself. Available in many attractive colors in low VOC solvent or water based formulas.

### L&M PERMAGUARD SPS™

The penetrating stain protector designed specifically to help protect polished concrete floors from water, petroleum, and stains. Formulated with low odor, low VOC polymers, and repellent ingredients to protect and beautify polished concrete floors. Enhances durability and ease of maintenance.

### L&M PETROTEX™

A silane/siloxane water and oil repellent for concrete, masonry and stone surfaces. Ready to use, quick drying, low-VOC, water-based solution. Contained in a proprietary blend of silane, siloxane, and fluoro-polymers, L&M PETROTEX™ penetrates and effectively treats polished commercial and industrial concrete floors, concrete pavements, and driveways to resist penetration and damaging effects of water and petroleum spills.



## DRY SHAKE FLOOR HARDENERS AND TOPPINGS

### L&M EMERYTOP 400™

The most durable floor system available. L&M EMERYTOP 400™ is a flowable, heavy duty emery topping for ACI Class 6 and 7 industrial floors. L&M EMERYTOP 400 produces a concrete floor surface that gives longer service life than normal high strength concrete, iron, or trap rock toppings.

### L&M EMERYPLATE FF™

The industry's ultimate dry shake for industrial floors requiring additional abrasion resistance and impact protection. L&M EMERYPLATE FF™ is engineered to be able to spread onto a newly placed, highly plastic slab, yet still achieve a flat floor. Rust-free performance is ideal for wet conditions.

### L&M QUARTZPLATE FF™

Ready mixed, pure quartz silica aggregate, dry-shake hardener that increases floor surface durability from four to five times over normal concrete. Contains graded aggregates and proprietary admixtures that allow this product to be broadcast onto a highly plastic slab to achieve a flat floor. Colors and light reflective formulations are available.

### L&M GRIP IT™ AND GRIP IT AO™

Emery and aluminum oxide aggregates. Designed to produce a non-slip concrete surface by broadcast application onto freshly placed concrete.



## JOINT PROTECTION AND CRACK REPAIR

### L&M JOINT TITE 750™

L&M's fast-setting, polyurea joint filler that protects interior saw cuts, control joints, and random concrete floor cracks subjected to heavy loads and high volume of forklift traffic from edge spalling and deterioration.

## PATCH AND REPAIR PRODUCTS

### L&M DURACRETE™

Single component, polymer-reinforced, high-strength, cement-based patching and repair mortar. L&M DURACRETE™ has been designed to repair, slope, or level structurally sound concrete surfaces that are pitted, worn, scaled, or spalled. Effective for interior and exterior applications. When properly applied, L&M DURACRETE will produce a strong, durable, well-bonded surface of desired texture.

## REPELLENTS AND SURFACE PROTECTION

### L&M AQUAPEL™ AND AQUAPEL PLUS™

Protect horizontal concrete from the damaging effects of water and road salts. Aquapel products are water-based silane/siloxane treatments that are odorless, non-flammable, and Low VOC. One coat recommended for most applications. Long lasting, penetrating. COMPLIANCE: NCHRP 244; ASTM C672; ASTM E514



LATICRETE International, Inc. ■ One LATICRETE Park North, Bethany, CT 06524-3423 USA

1.800.243.4788 ■ +1.203.393.0010 ■ [www.laticrete.com](http://www.laticrete.com)

©2019 LATICRETE International, Inc. All trademarks shown are the intellectual properties of their respective owners.

DS-087.4-0419