



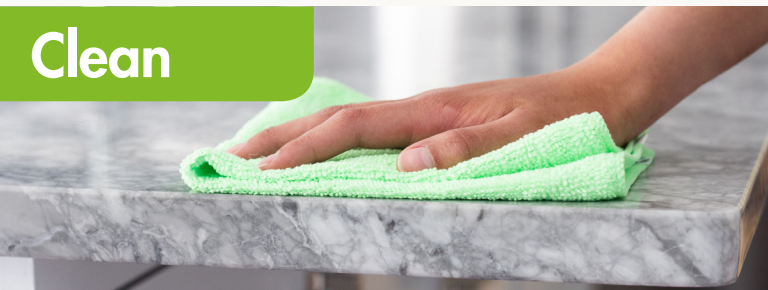
STONETECH[®]

STONE, TILE & GROUT CARE SOLUTIONS

Protect



Clean



Transform



Protect Your
Investment and
Preserve the Beauty
of Your Surface

Protect your investment for years to come with STONETECH® surface care products.

STONETECH offers reliable, high quality and safer water-based and low VOC care and maintenance solutions to protect, clean and transform your stone, tile, masonry and grout.

Keep surfaces looking as beautiful as the day they were installed.

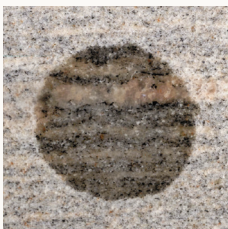


Protect



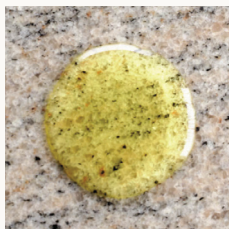
Protect your investment from stains.

STONETECH® natural look penetrating sealers protect your stone, tile or grout from tough stains and keeps them looking new longer, without changing the look of the surface. Without the proper protection, porous surfaces are susceptible to damage caused by common oil and water based liquids. Prevent unsightly stains with STONETECH sealers.



Before

Liquid penetrates and stains



After

Liquid remains on the surface and can be wiped away

Clean

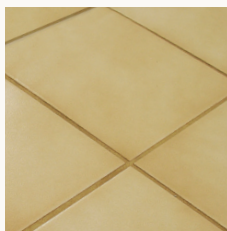


Formulated for cleaning stone, tile and grout.

Many all-purpose cleaners are too acidic or alkaline — which can degrade your stone's sealer, leave it susceptible to staining, and even etch the surface. STONETECH cleaners are specially formulated to help you properly care for your stone, tile and grout. This complete line includes products for gentle, daily cleaning, as well as heavy-duty problem solvers for tougher cleaning projects.



Before
Built-up grime



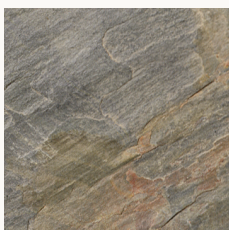
After
Restored beauty

Transform

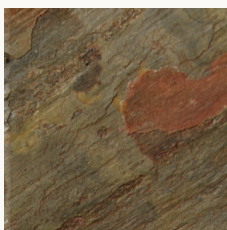


Restore luster and enhance stone's natural beauty.

Whether you want to restore the luster to polished stone, or bring out the surface's color, depth and beauty, there is a range of STONETECH enhancing products to suit your specific needs. STONETECH 2-in-1 enhancing sealers can bring out the stone's richer, deeper color with or without more shine — all while protecting your surface.



Before
Dull appearance



After
Deeper tones

Product Selector
by Surface Type

			Surface Type													
			Water Based	Granite	Marble	Limestone	Travertine	Quartzite/Bluestone/Sandstone	Slate	Saltillo/Terra Cotta	Clay Brick	Concrete/Masonry	Quartz/Engineered Stone	Ceramic/ Porcelain Tile	Grout	Stainless Steel
Protect	General-Use Sealers	STONETECH® BulletProof® Sealer★★★														
		STONETECH Heavy Duty Sealer★★														
		STONETECH Stone, Tile & Grout Sealer★														
		STONETECH Impregnator Pro® Sealer														
		STONETECH Quartz & Porcelain Tile Sealer														
	Exterior	STONETECH Heavy Duty Exterior Sealer														
		STONETECH Salt Water Resistant Sealer+														
	Grout	STONETECH Advanced Grout Sealer (Aerosol)+														
		STONETECH Heavy Duty Grout Sealer★★★														
		STONETECH Grout Sealer★★														
	Installation	STONETECH Grout Release+														
		STONETECH Stain Protecting Grout Additive+														
Clean	Daily Cleaners	STONETECH Revitalizer® Cleaner & Protector RTU/Concentrate														
		STONETECH Stone & Tile Cleaner RTU/Concentrate														
		STONETECH Quartz & Tile Cleaner														
	Heavy Duty Cleaners/ Problem Solvers	STONETECH Heavy Duty Tile & Grout Cleaner RTU/Concentrate														
		STONETECH KlenzAll™ Cleaner RTU/Concentrate+														
		STONETECH DeepKlenz™ Cleaner+														
		STONETECH Restore™ Acidic Cleaner Concentrate+														
		STONETECH Oil Stain Remover+														
		STONETECH Epoxy Grout Haze & Coating Stripper+														
		STONETECH Grout Haze Remover														
		STONETECH Soap Scum Remover														
		STONETECH Mold and Mildew Stain Remover														
		STONETECH Stainless Steel Pro Cleaner														
Transform	Maintenance	STONETECH Stone Polish		Polished	Polished	Polished	Polished	Polished								
	Enhancing Sealers	STONETECH Enhancer Pro™ Sealer		Textured	Textured											
		STONETECH Enhancer & Sealer		Textured	Textured											
		STONETECH High Gloss Finish & Sealer				Textured	Textured									
		STONETECH Semi Gloss Finish & Sealer				Textured	Textured									
	Restoration	STONETECH Honing Powder/Polishing Powder+														

★★★ Best; Great for most porous surface
★★ Better; Great for medium porous surface
★ Good; Great for least porous surface

Note: RTU = Ready-to-Use formula

+ May not be available at Floor & Decor locations. See www.stonetechn.com for more information.

   Please call LATICRETE Technical Support for advice on this surface and product.

Care and maintenance tips



Prevent spills from staining

Stone, tile and grout can vary in porosity. Common food and beverage spills can absorb into the surface and leave permanent stains. Prevent stains using a sealer such as STONETECH® BulletProof Sealer which provides maximum stain protection on the most porous surfaces. Coasters, trivets, rugs and mats are always recommended.



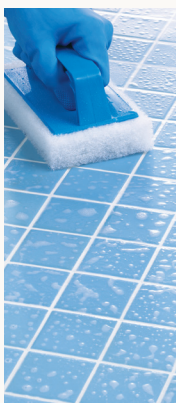
Use cleaners made for stone

Avoid using all-purpose cleaners not specifically designed for stone. Some all-purpose cleaners (i.e. bathroom, grout and tub cleaners) may contain acid (vinegar) or alkaline (bleach or ammonia). STONETECH Stone & Tile Cleaner is pH neutral and specifically formulated to properly clean stone, tile and grout.



Consider a cleaner & protector

For heavily used countertops or dense stones, a 2-in-1 cleaner & sealer such as STONETECH Revitalizer™ Cleaner & Protector is a great option. It cleans common messes while protecting against water and oil based stains.



Clean grout before resealing

When resealing your grout, first clean it with STONETECH Heavy Duty Tile & Grout Cleaner to allow sealer to properly penetrate into the grout.

Bath & shower maintenance

Mineral deposits, soap scum, mold and mildew can quickly build up in wet areas such as the bath and showers. Frequent cleaning with STONETECH Stone & Tile Cleaner or STONETECH Revitalizer Cleaner & Protector and using a squeegee or dry cloth after each use will minimize residues.

Visit www.stonetech.com for additional information.

Answers to common questions

Why does my granite stain?

Granite is like any other natural stone — it can be porous and absorbent. Stone that has swirls and/or veins, or granite with smaller-sized crystals, tends to be more absorbent and more likely to stain.

Why should I seal my natural stone, tile and grout?

Protected surfaces will be easier to clean, less likely to stain and help to preserve your surface for years to come.

How can I tell if my stone has already been sealed?

Simply apply a drop of water at least ½" (13 mm) in diameter to the top of the stone and let it stand for at least 5 minutes. If, after 5 minutes, the stone does not darken, then your stone has most likely been sealed.

Is one coat of sealer enough for natural stone?

When sealing dense stone, one coat should be sufficient. Most stone and grout, however will require at least two coats of sealer.



Will STONETECH® sealers change the look of my countertop?

STONETECH natural look penetrating sealers with yellow labels create an invisible shield in the stone that protect against stains without darkening or changing the stone's

appearance. STONETECH enhancing sealers, however, deepen the color, seal the stone and are clearly marked with a red label.

How can I clean mildew off of the grout in my shower?

Depending on the surface, and the amount of mildew we recommend using STONETECH Mold & Mildew Stain Remover, or Heavy Duty Tile & Grout Cleaner.

How can I bring back the luster on my worn out countertop?

STONETECH Stone Polish is designed to help restore the luster back to a polished natural stone countertop.

Why use water-based sealers?

STONETECH water-based sealers deliver superior performance, are low odor, non-flammable, have fewer fumes (lower VOC) than solvent-based sealers and thus better for you and the environment.



Questions? We're here to help.

For questions on how to care for your surface, please contact:

www.stonetech.com | 1-888-786-6343



LATICRETE International, Inc. ■ One LATICRETE Park North, Bethany, CT 06524-3423 USA
1.888.786.6343 ■ +1.203.393.0010 ■ www.stonetech.com

T-3905-0719 ©2019 LATICRETE International, Inc. All trademarks shown are the intellectual properties of their respective owners.

