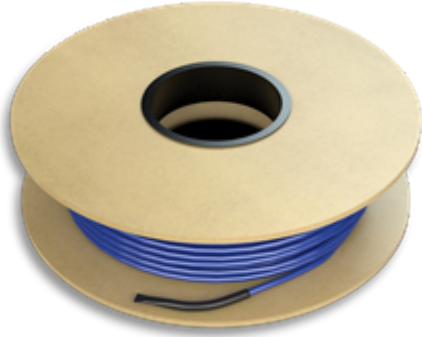




STRATA_HEAT Wire

DS-26.2-1220

**Globally Proven
Construction Solutions**



1. PRODUCT NAME

STRATA_HEAT Wire

2. MANUFACTURER

LATICRETE International, Inc.
1 LATICRETE Park North
Bethany, CT 06524-3423 USA

Telephone: +1.203.393.0010, ext. 1235
Toll Free: 1.800.243.4788, ext. 1235
Fax: +1.203.393.1684
Website: laticrete.com

3. PRODUCT DESCRIPTION

STRATA_HEAT Wire is a versatile, splice-less, floor warming wire system designed for use under many types of finished floor coverings to provide luxury and comfort. Designed for use with STRATA_HEAT Thermostat, STRATA_HEAT Mat and STRATA_HEAT Spacing Strips. With STRATA_HEAT Wire there isn't any need to dig out the mat to bury splices between the cold lead and the heating portion of the wire or the heated wire termination. These splice-less junctions have a uniform diameter and easily fit into the STRATA_HEAT Mat castellations.

Advantages

- Component of LATICRETE Lifetime System Warranty.
- Spliceless design, to allow for an easier installation process
- No need to cut out the mat and/or the sub-floor to bury the cold lead
- Multiple spacing options allow for variability in heat output.
- This appliance wiring material component is recognized by Underwriters Laboratories, Inc. (UL)

Representative samples have been evaluated by UL and meet applicable UL requirements.

Suitable Substrates

- HYDRO BAN Board
- Concrete
- Mortar Bed
- Exterior Glue Plywood (Interior Only)
- Existing Ceramic Tile and Stone
- Cement Terrazzo
- Cement Backer Board

Shelf Life

Unlimited. Store at 40°F to 75°F (4°-24°C) in a covered area (out of the sun).

Limitations

- Interior floor installations only.
- Adhesives/mastics, mortars and grouts for ceramic tile, pavers, brick and stone are not replacements for waterproofing membranes. When a waterproofing membrane is required use a HYDRO BAN Waterproofing Membrane (see Section 10 FILING SYSTEMS).
- Note: Surfaces must be structurally sound, stable and rigid enough to support ceramic/stone tile, thin brick and similar finishes. Substrate deflection under all live, dead and impact loads, including concentrated loads, must not exceed L/360 for thin-bed ceramic tile/brick installations or L/480 for thin-bed stone installations where L=length of span.

Cautions

- Do not turn STRATA_HEAT Wire on until entire installation of tile and grout has cured for a minimum of 72 hours at 70°F (21°C).
- When installing the STRATA_HEAT Wire the factory splice must be at least 12" (30 CM) from the wall and fully encapsulated with thin-set and covered with tile.
- Do not staple heating elements directly.
- Use only appropriate size of STRATA_HEAT Wire for specified area of floor to be heated. **DO NOT TUCK/INSTALL/FOLD EXCESS WIRE INTO WALL CAVITY.**
- Protect finished work from traffic until fully cured.
- All electrical connections must be made by a licensed electrician. Failure to do so will void all warranties and claims. Comply with all applicable building and electrical codes.

- Keep out of reach of children.

4. TECHNICAL DATA

Specifications subject to change without notification. Results shown are typical but reflect test procedures used. Actual field performance will depend on installation methods and site conditions.

5. INSTALLATION

- Please refer to STRATA_HEAT™ Wire Installation Manual DS-044.6 for complete installation instructions.

6. AVAILABILITY AND COST

Availability

LATICRETE materials are available worldwide.

For Distributor Information, Call:

Toll Free: 1.800.243.4788

Telephone: +1.203.393.0010

For on-line distributor information, visit LATICRETE at laticrete.com

Cost

Contact a LATICRETE Distributor in your area.

7. WARRANTY

See 10. FILING SYSTEM:

- DS 230.13: 1 Year Product Warranty

8. MAINTENANCE

Non-finish LATICRETE and LATAPOXY® installation materials require no maintenance but installation performance and durability may depend on properly maintaining products supplied by other manufacturers.

9. TECHNICAL SERVICES

Technical Assistance

Information is available by calling the LATICRETE Technical Service Hotline:

Toll Free: 1.800.243.4788, ext. 1235

Telephone: +1.203.393.0010, ext. 1235

Fax: +1.203.393.1948

Technical and Safety Literature

To acquire technical and safety literature, please visit our website at laticrete.com.

10. FILING SYSTEM

Additional product information is available on our website at laticrete.com. The following is a list of related documents:

- DS 230.13: LATICRETE Product Warranty (United States and Canada)
- DS 230.05APD: LATICRETE 5 Year Tile & Stone System Warranty (United States and Canada)
- DS 230.10APD: LATICRETE 10 Year Tile & Stone System Warranty (United States and Canada)
- DS 025.0APD: LATICRETE 25 Year Tile & Stone System Warranty (United States and Canada)
- DS 230.99: LATICRETE Lifetime Tile & Stone System Warranty (United States and Canada)
- DS 236.0: 9235 Waterproofing Membrane
- DS 606.0: Floor Warming Thermostat
- DS 663.0: HYDRO BAN®
- DS 044.6: STRATA_HEAT Wire Installation Manual
- DS-046.4: STRATA_HEAT Smart Wi-Fi Thermostat Easy Set Up Guide
- DS-050.7: STRATA_HEAT Programmable Thermostat Easy Set Up Guide
- DS-046.2: STRATA_HEAT Smart Wi-Fi Thermostat Operating Manual
- DS-050.4: STRATA_HEAT Programmable Thermostat Operating Manual
- DS-044.8: STRATA_HEAT Smart Wi-Fi Thermostat Troubleshooting guide

LATICRETE International, Inc.

One LATICRETE Park North, Bethany, CT 06524-3423 USA • 1.800.243.4788 • +1.203.393.0010 • www.laticrete.com

© 2020 LATICRETE International, Inc. All trademarks shown are the intellectual properties of their respective owners.