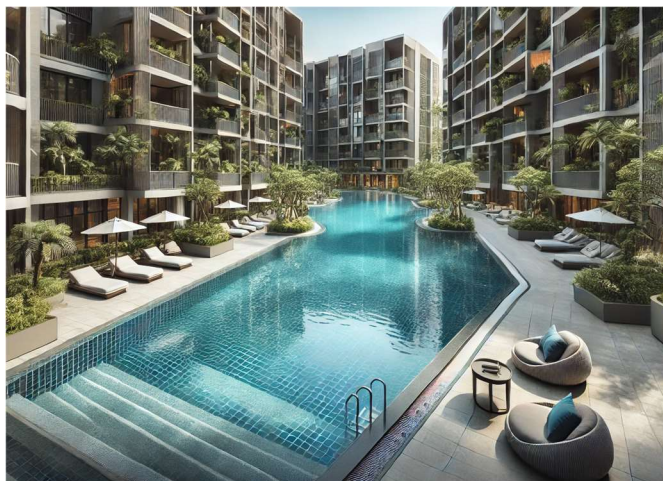




**For the Builders
of a Better World™**

SPECTRALOCK® 1 Pre-Mixed Grout

SPECTRALOCK 1 Pre-Mixed Grout is a patented, pre-mixed, stain resistant with epoxy performance offering superior strength, fastest cure time, and the ability to be submerged, all while exceeding the standard of ANSI A118.19 and meeting the standard of ANSI A118.3*.



FEATURES/BENEFITS

- Has the same performance as an epoxy grout (ANSI A118.3) product without the epoxy resins*.
- 10X stronger than traditional pre-mixed grout.
- Stain resistant†.
- Non-sag formula for walls and floors.
- Uniform color — no blotchiness or shading.
- Never needs sealing.
- Easy to maintain, cleanable to the original color.
- Tough, durable, and crack resistant.
- Can be used for grout joints from 2mm-9mm.
- Equipped with anti-microbial protection.

*Meets or exceeds ANSI A118.3 specific test designation 5.6.

† Stain resistant (residential installations only) to common household cleaners, liquids and other goods. Clean all spills immediately.

USES

- Ceramic tile, glass tile and stone.
- Residential and commercial.
- Interior and exterior.
- Floors and walls.
- Ideal for re-grouting applications.
- Swimming pools, fountains and other wet area applications.

MANUFACTURER/ DISTRIBUTED BY

LATICRETE South East Asia Pte Ltd
No. 38 Sungei Kadut Street 2 (Level 2, A3) Singapore 729245
Telephone: +65 6515 3028 Fax: +65 6515 3037
Internet: se.laticrete.com

STANDARDS/CERTIFICATIONS

- ANSI A118.3, American National Standard Specifications for Chemical Resistant, Water Cleanable Tile-setting and Epoxy Grouting and Water Cleanable Tile-setting Epoxy Adhesive tested with 1244 (Bright White).
- WI 9.1.73



This product has been certified green by the UL GREENGUARD Certification Program.

Packaging
5kg/pail

Color

Bright White, Classical White, Colorado Brown, Mist Grey, Elegant Grey and Platinum.

Approximate Coverage

US/Metric	Joint Widths			
Tile Dimension	1.5mm	3mm	6mm	9mm
25 x 25 x 6 mm	5.4 m ²	2.8 m ²	1.5 m ²	1.1 m ²
50 x 50 x 6 mm	10.7 m ²	5.4 m ²	2.8 m ²	1.9 m ²
76 x 152 x 8mm	16.4 m ²	8.4 m ²	4.5 m ²	3.1 m ²
106 x 106 x 8mm	18 m ²	9 m ²	4.5 m ²	3.0 m ²
102 x 610 x 9mm	24.9 m ²	12.6 m ²	6.5 m ²	4.5 m ²
152 x 610 x 9m	34.5 m ²	17.4 m ²	8.9 m ²	6.0 m ²
305 x 610 x 9mm	57.3 m ²	28.8 m ²	14.6 m ²	9.8 m ²
610 x 610 x 9mm	85.8 m ²	43.1 m ²	21.7 m ²	14.6 m ²
305 x 914 x 9mm	64.5 m ²	32.4 m ²	16.4 m ²	11 m ²

Actual coverage will vary depending on job site conditions, actual tile size and installed grout joint size. Add 10% for waste, spillage and clean-up, and another 10%–15% when grouting unglazed quarry tile.

Shelf Life

Factory sealed containers of this product are guaranteed to be of first quality for eighteen (18) months. Store between $\geq 0^{\circ}\text{C}$ to $\leq 40^{\circ}\text{C}$. Material should be kept in a cool, dry location prior to application.

Limitations

- Not for use in areas subjected to harsh chemicals, or areas exposed to aggressive cleaning regimens (e.g. steam cleaning). Not for use on floor and base areas in veterinary clinics, kennels, or in applications exposed to high concentrations of food and mineral acids or areas exposed to high temperatures. For these areas LATICRETE recommends using grout that meets ANSI A118.5 such as SPECTRALOCK 2000 IG.
- Wait at least 14 days before cleaning grout joints with harsh cleaning supplies, such as hard bristle brushes.
- Pre-mixed grouts for ceramic tile and stone are not a replacement

for a waterproofing membrane. When a waterproofing membrane is required, use a LATICRETE Waterproofing Membrane.

- SPECTRALOCK 1 Pre-Mixed Grout should not be used on floors and bases in the food preparation or cleaning area of kitchens.
- Stain resistant to common household cleaners, liquids and other goods in residential installations only. Clean all spills immediately.

Cautions

- Consult SDS for more safety information.
- DO NOT add water or any other material to the mixture, or re-temper with water. This will have an adverse effect on the product and void all warranties.
- Protect finished work from heavy foot traffic for a minimum of 24 hours at 21°C .
- SPECTRALOCK 1 Pre-Mixed Grout could irritate eyes and skin. Wear proper personal protection equipment as such, safety goggle and protective gloves.
- DO NOT ingest internally. See SDS for more information.
- Keep out of reach of children.
- Protect from freezing. Product is stable up to 3 freeze/thaw cycles.
- For best results we recommend SPECTRALOCK Part D DAZZLE Glow-In-The-Dark to be used with SPECTRALOCK 1 Translucent.
- Maximum stain protection is achieved in 14 days at 21°C . Protect from exposure to acids (such as mustard, salad dressing, etc.) and strong cleaners during this period. Protect grout from dirt, construction debris, and contamination for 14 days @ 21°C .
- Some soft polished marble or delicate glazed or glass tile might be scratched by SPECTRALOCK 1 Pre-Mixed Grout during installation. Apply a small test area to determine results before grouting entire installation.
- In steam rooms or submerged applications, allow SPECTRALOCK 1 Pre-Mixed Grout to cure for a minimum of 14 days at 21°C days before use of area and filling with water. See TDS 192 for more information on these applications.
- SPECTRALOCK 1 Pre-Mixed Grout could affect the color of white or porous stones (such as White Carrara, Thassos White, Royal Danby etc.). Apply a small test area to determine results before grouting entire installation.
- For "mixed media" tile, test stones for compatibility and cleaning time. Some porous stone will need to be cleaned much quicker than less porous stones.
- Conduct a test area to determine compatibility with metal or steel tile.

TECHNICAL DATA

Performance Properties

Test	Test Method	Results
Water Cleanability	ANSI A118.3 5.1	Pass
Initial Set Service Strength	ANSI A118.3 5.2	> 2 hours < 8 hours
Vertical Joint Sag	ANSI A118.3 5.4	Pass
Quarry/Quarry Bond Strength (28 days)	ANSI A118.3 5.5	4 - 6.3 MPa
Compressive Strength (14 days)	ANSI A118.3 5.6	22.3 - 25 MPa
Tensile Strength (14 days)	ANSI A118.3 5.7	5.5 - 6.2 MPa
Thermal Shock	ANSI A118.3 5.8	4 - 5.5 MPa

* Meets or exceeds ANSI A118.3 specific test designation 5.6

Chemical Resistance* Chart

Chemical Name	Splash Exposure (30 min)	Intermittent Exposure (24 hours)	Continuous Exposure (7 days)
20% Sulfuric acid	R	R	R
5% Lactic acid	R	R	NR
50% Tannic acid	R	R	NR
50% Tartaric acid	R	R	R
10% Oxalic acid	R	R	NR
5% Acetic acid	R	R	NR
5% Benzoic acid	R	R	NR
3% Formic acid	R	R	NR
5% Citric acid	R	R	NR
1% potassium Permanganate	R*	R*	NR
5% Sodium Hyperchlorite	R	R	NR
45% KOH	R	R	NR
Distilled water	R	R	R
Mineral Water	R	R	R
Sea Water	R	R	R
Methanol		R	NR
10% Ethanol	R	R	NR
96% Ethanol	R	R	NR
Isopropanol (Windex)	R	NR	NR
Mek	R	NR	NR
Methylene chloride	R	R	NR
Toluene	NR	NR	NR
Xylene	NR	NR	NR

* Material will stain due to exposure to these items.

NR=Not Recommended.

R=Recommended. Chemical Resistance determined in accordance with ASTM C267-1982.

NOTES TO SPECIFIER: Use the constant exposure recommendations for intermittent exposure to reagents at temperatures above 32°C. Results shown are typical but reflect test procedures used. Actual field performance will depend on installation methods and site conditions.

Working Properties

Density — 14.2 lbs/gal (1.7 g/ml)

Test Standard		Temperature		
		10°C	21°C	32°C
WI 9.1.73	Ready for Light Foot Traffic	9 hrs	6 hrs	4 hrs
WI 9.1.73	Ready for Heavy Foot Traffic	48 hrs	24 hrs	10 hrs
WI 9.1.73	Dirt, Stain Resistance, Food Spills, Household Cleaners	21 days	14 days	10 days
WI 9.1.73	Full Cure	28 days	28 days	14 days

Results shown are typical but reflect test procedures used. Actual field performance will depend on installation methods and site conditions.

INSTALLATION

Surface Preparation

Before starting to grout, remove spacers and debris in grout joints and remove dust and dirt using a wet sponge. Do not leave water standing in joints. The use of a topical sealer or grout release applied to unglazed porcelain tile, abrasive, non-slip or rough textured tiles or porous tile or stone surfaces before grouting will facilitate cleaning. Note: when grouting in hot weather refer to TDS 176 Hot Weather Tiling and Grouting. Substrate temperature must be between 5°C and 40°C. Prior to grouting, apply SPECTRALOCK 1 Pre-Mixed Grout to a small area to ensure the product will not stain. Apply STONETECH Grout Release or a suitable STONETECH sealer to the surface of the tile, if necessary.

Application

See Data Sheet 36589.5, How To Install SPECTRALOCK 1 Pre-Mixed Grout, for detailed installation instructions. This document is available online at www.laticrete.com. Please note that working time is affected by many variables including surface and room temperatures. Warmer climates, for example, will shorten curing & working time, while colder conditions will extend the cure time. Installation substrate temperature range should be between 5°C - 40°C. Do not add water or any other materials to the grout mixture. This will have an adverse effect on the product and void all warranties. Clean-up is critical.

Prepare for the initial and final washes by having pails of clean water ready for the clean-up process.

NOTE: After surfaces are cleaned, allow to dry thoroughly before grouting.

- Spread grout using a sharp edged, firm rubber grout float. Work the grout diagonally across the joints, packing them full.

- “Cut” excess grout off the tile surface using the edge of the float held at a 90° angle like a squeegee, stroking diagonally to avoid pulling grout out of filled joints.

Cleaning

NOTE: Have clean water, new clean sponges, white nylon scrub or scouring pads and clean microfiber towels ready.

- Once grout has been spread, wait approximately 5-10 minutes before cleaning (or within an “arms-length” of what has been spread). Wait slightly longer at colder temperatures.
- Submerge clean sponge into water and wring until the sponge is moist but not dripping with water. Putting too much water on the grout joints could affect the cure time and appearance of grout joints.
- Change wash water every 4.6 m².
- Wipe grout joints and tile surface in a light circular motion, loosening grout residue while keeping the joints smooth and full.
- Drag a clean sponge diagonally over the scrubbed surfaces to remove any remaining grout residue.
- For best results, we recommend to rinse sponge after every final pass; use each side of sponge only once between rinsing.
- Check work as you clean. If necessary, repair any low spots with additional grout.

WALL APPLICATIONS

Instead of a sponge, the use of a damp, well wrung, folded terry cloth towel can be helpful to remove excess grout while smoothing joints less than 3 mm on walls. Use light pressure when using folded terry cloth towel.

FINAL INSPECTION AND CLEANING

- Begin final cleaning when grout joints are hard to the touch, depending upon the size of the grout joint and the ambient temperature. Smaller grout joints 2mm would take less time to start to clean, approx. 45 min. For larger grout joints 9mm we recommend waiting about 1 hour to ensure the grout joints are hard and cannot be disturbed with the second cleaning.
- Use only clean water and simply dunk the white nylon scrub or scouring pad in the water and let all the water pour out — it should be nearly dry and then start to break up the grout haze left from the initial wash on the surface of the tiles.
- Rinse scrub pad frequently, letting all water escape before continuing to clean.
- Then, use a clean cloth to the scrubbed surfaces to remove any residue.
- Allow cleaned areas to dry and inspect tile/stone surface.

- If haze remains on the tiles the following day, it can be buffed off the using a nylon scrub pad.
- Make certain to check tile surface with adequate lighting after the tile surface is dry.
- Rinse with clean water and allow surface to dry. Inspect grout surface and repair as required with fresh grout.
- For ANY area that will later receive intermittent water exposure, allow area to cure a minimum of 24 hours at 21 °C & 50% RH.
- Protect finished surface from traffic for at least 24 hours at 21 °C.
- Do not expose grout to acid cleaners for 14 days.
- Allow grout to cure for 14 days at 21 °C prior to use in submerged applications or steam rooms.

See LATICRETE Technical Data Sheet 192 for more information on grouting of ceramic tile in submerged installations.

AVAILABILITY AND COST

Availability

LATICRETE and LATAPOXY materials are available worldwide. For distributor information, call:

Telephone: (65) 6515-3028

Fax: (65) 6515-3037

For on-line distributor information, visit LATICRETE at se.laticrete.com

Cost

Contact a LATICRETE Distributor in your area.

WARRANTY

LATICRETE South East Asia Pte Ltd warrants that SPECTRALOCK 1 Pre-Mixed Grout is free from manufacturing defect and will not break down, deteriorate or disintegrate under normal usage for a period of one (1) year from date of purchase subject to the terms and conditions.

MAINTENANCE

Wait at least 14 days before cleaning grout joints with harsh cleaning supplies, such as hard bristle brushes. Routine maintenance can be done with STONETECH® Stone & Tile Cleaner or any neutral pH cleaner. For tough or difficult to remove soil use STONETECH KlenzAll™ Cleaner, with a white nylon scouring pad or a long handled stiff bristle brush. For additional information please refer to the Grout Guide TDS 400.

TECHNICAL SERVICES/ CONTACT

Technical Assistance

Information is available by calling:

LATICRETE South East Asia Pte Ltd
No. 38 Sungei Kadut Street 2
(Level 2, A3)
Singapore 729245
Telephone: (65) 6515-3028

Fax: (65) 6515-3037

Email: enquiry@laticrete.com.sg

Technical and safety literature

To acquire technical and safety literature, please visit our website at
se.laticrete.com

Disclaimer

LATICRETE is not responsible for product use beyond its intended application. Liability is limited to replacing defective materials. We are not responsible for any loss or damage resulting from improper use. Product specifications are subject to change without notice. For the most up-to-date information, please visit our website at se.laticrete.com.