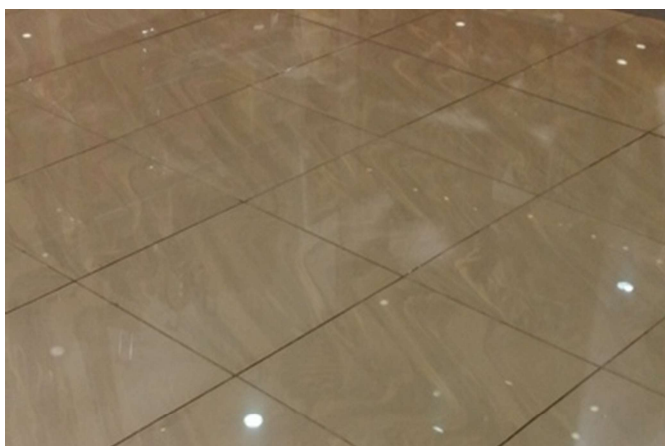




**For the Builders
of a Better World™**

STONETECH® Enhancer & Sealer

STONETECH Enhancer & Sealer is the standard sealer that seals and enhances the surface to a rich color.



FEATURES/BENEFITS

- Deepens color
- Standard protection against most stains
- Interior use
- Easy-to-use, water-based formula

USES

- Countertops
- Backsplashes
- Floors
- Walls

MANUFACTURER/ DISTRIBUTED BY

LATICRETE South East Asia Pte Ltd

No. 38 Sungei Kadut Street 2 (Level 2, A3) Singapore 729245

Telephone: +65 6515 3028 Fax: +65 6515 3037

Internet: se.laticrete.com

Recommended Surfaces:

Unpolished natural stone, masonry, and grout surfaces such as:

- Bluestone
- Slate
- Travertine
- Limestone
- Flagstone
- Textured stone
- Flamed stone
- Tumbled stone
- Concrete

Item Numbers and Packaging

20 ℓ

Approximate Coverage

Up 122.0 m² /20L depending on porosity of stone.

Shelf Life

Factory sealed containers of this product are guaranteed to be of first quality for two (2) years if stored at temperatures $\geq 0^{\circ}\text{C}$ and $\leq 40^{\circ}\text{C}$.

VOC Content

<150 g/L (excluding water) for EPA purposes.

<25 g/L (including water) for U.S. state purposes (Low Solids Coating).

Storage and Handling Instructions

WARNING: HARMFUL IF SWALLOWED. MAY CAUSE EYE, SKIN AND RESPIRATORY IRRITATION. Do not ingest. Avoid contact with eyes and skin. Avoid prolonged exposure to vapors. KEEP OUT OF THE REACH OF CHILDREN. Do not mix with other chemicals. Do not release to waterways.

Cautions

Consult SDS for more safety information.

- Inhalation: Remove victim to fresh air and keep at rest in a position comfortable for breathing. Get medical attention if any discomfort continues.
- Skin contact: Wash skin with soap and water. Get medical attention if symptoms occur.
- Eye contact: Flush eyes thoroughly with water for at least 15 minutes. Get medical attention if symptoms persist.
- Ingestion: Rinse mouth. Do not induce vomiting. Get medical attention if any discomfort continues.

TECHNICAL DATA**Physical Properties**

Form	Liquid
Color	Milky white
Odor	Ether-like
PH	4.5
Specific Gravity	1.00

Flash Point	> 110°C
-------------	---------

Working Properties

Full Cure	24 – 72 hours
-----------	---------------

Results shown are typical but reflect test procedures used. Actual field performance will depend on installation methods and site conditions.

INSTALLATION**Surface Preparation**

Read entire label before using. Use only as directed. Test in a small inconspicuous area with a 24-hour cure time to determine ease of application and desired results. Allow new grout installations to cure for at least 72 hours prior to application. Be sure surface is clean, thoroughly dry and free of sealers, waxes and coatings. Not recommended for exterior surfaces. Surface temperature should be between 5°C - 40°C. Avoid skin and eye contact. Wear protective eyewear and gloves. Ensure work area is well-ventilated during application and until surface is dry. Keep children and pets out of the area during application and drying.

Directions

1. Shake well before using.
2. Apply STONETECH® Enhancer & Sealer evenly and liberally using a paint pad, low-pressure chemical-resistant sprayer, roller or brush. Avoid applying sealer on unintended surfaces.
3. Allow sealer to penetrate surface for 15–30 minutes; denser material may require maximum time to penetrate surface. Spread excess sealer over entire area for even penetration.
4. Following penetration time, completely wipe surface dry with a clean dry towel. DO NOT ALLOW EXCESS TO DRY COMPLETELY ON SURFACE.
5. A second coat may be needed for porous, absorbent surfaces or if a darker appearance is required. Apply second coat 1 hour after start of initial application following directions in steps 1–4.
6. A full cure is achieved after 24–72 hours. Surface traffic may begin in 6–8 hours. If needed sooner, cover the floor with red rosin paper to protect it until the recommended time periods have passed.
7. Clean tools used during application with water.

AVAILABILITY AND COST**Availability**

LATICRETE® materials are available worldwide. For distributor information, call:

Telephone: (65) 6515-3028

Fax: (65) 6515-3037

For on-line distributor information, visit LATICRETE at se.laticrete.com.

Cost

Contact a LATICRETE Distributor in your area.

WARRANTY

Subject to the conditions and limitations stated below, LATICRETE South East Asia Pte Ltd warrants that its products will be free from

manufacturing defects and will not break down or deteriorate under normal usage for a period of one (1) year from the date of purchase when installed in accordance with the written specifications of LATICRETE and industry standard guidelines.

MAINTENANCE

Highly alkaline, acidic, ammoniated, or abrasive cleaners are not necessary for daily maintenance and may also degrade the sealer, adversely affecting stain resistance. Tile and stone routine cleaning with a neutral pH cleaner such as STONETECH Stone & Tile Cleaner is recommended. For tough or difficult to remove soil use STONETECH KlenzAll™ Cleaner, and a nylon scrubbing pad or a long handled stiff bristle brush. Please note: Prior to using any cleaning material on a tile, stone, etc. installation, test a discrete area or scrap piece of tile to insure desired results.

TECHNICAL SERVICES/ CONTACT

Technical Assistance

Information is available by calling:

LATICRETE South East Asia Pte Ltd
No. 38 Sungei Kadut Street 2
(Level 2, A3)
Singapore 729245
Telephone: (65) 6515-3028
Fax: (65) 6515-3037
Email: enquiry@laticrete.com.sg

Technical and safety literature

To acquire technical and safety literature, please visit our website at se.laticrete.com.

Disclaimer

LATICRETE is not responsible for product use beyond its intended application. Liability is limited to replacing defective materials. We are not responsible for any loss or damage resulting from improper use. Product specifications are subject to change without notice. For the most up-to-date information, please visit our website at se.laticrete.com.