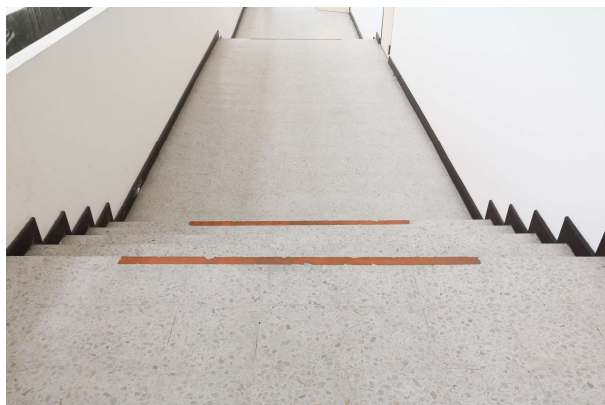




**For the Builders
of a Better World™**

Terrazzo CMT

Terrazzo CMT is a high strength cementitious based, high wear resistant overlayment, with exposed aggregates topping that incorporates with a wide variety of decorative grains. e.g. granite, glass chips and pearl flags etc. It is specially designed for being used as an attractive interior decorative floor finish and a high performance overlayment.



FEATURES/BENEFITS

- Decorative exposed aggregates finish
- Design versatile and customized finish
- Gypsum / protein free - Microbial inhabitant finish
- High wearing resistance
- High impact resistance
- High abrasion resistance
- Low maintenance
- Low odour application
- Low VOC
- Ease of application
- Non-staining finish*
- Available in wide colour variants

*Sealer is recommended to be used as a finishing

USES

- Residential
- Retail space
- Food Serving Areas
- Showrooms
- Offices
- Commercial Complex
- Shopping Malls
- Cafeteria / Bistro
- Hotel / Recreation
- Education Facilities

MANUFACTURER/ DISTRIBUTED BY

LATICRETE South East Asia Pte Ltd
No. 38 Sungei Kadut, Street 2 (Level 2, A3) Singapore 729245
Telephone: +65 6515 3028 Fax: +65 6515 3037
Internet: se.laticrete.com

STANDARDS/CERTIFICATIONS

- ASTM C348
- ASTM C109
- ASTM C531

Suitable Substrates

- Concrete
- Cement backer board*
- Vapor Ban Hybrid
- Ceramic tile and stone**
- Cement mortar beds

* Consult cement backer board manufacturer for specific installation recommendations.

** See Installation — Surface Preparation

Packaging

Powder: 25kg per bag

Pigmented Colour kit: 1000ml

Color

Paris Green (Green)

Tufts Blue (Blue)

Vermillion (Red)

Desert Sand (Beige)

Approximate Coverage

One set of Terrazzo CMT yield a coverage of approximate 0.8 to 0.9 m² at 20mm thick per coat

Shelf Life

Factory sealed containers of this product are guaranteed to be of first quality for 6 months if stored at shelter area with temperatures $\geq 0^{\circ}\text{C}$ and $\leq 40^{\circ}\text{C}$.

‡ High humidity will reduce the shelf life of bagged product.

Limitations

- Apply only on concrete substrate and well-bonded.
- For interior use only.
- Do not install when surface temperature is below 5°C or above 40°C , or when ambient air temperature is expected to fall below 10°C during placement or before material takes final set.
- Do not install over painted or gypsum-based surfaces.
- Do not exceed recommended mixing ratio as indicated in mixing instructions. Over watering may weaken product properties.
- Never mix with cement or admixtures.
- Do not apply Terrazzo CMT over waterproofing or crack isolation membranes.
- Adhesives/mastics, mortars and grouts for ceramic tile, pavers, brick and stone are not replacements for waterproofing membranes. When a waterproofing membrane is required, use a LATICRETE Waterproofing Membrane.
- Do not bond directly to luan, OSB, particle board or Masonite® surfaces.
- Not for use in submerged applications
- Terrazzo CMT should not be installed over any moving joints or structural cracks (cracks greater than $1/16"$ [1.5mm] in width or any crack which experiences vertical displacement). All existing expansion joints, cold joints and control joints must be brought up through the wear surface cement. Failure to honor movement joints will result in cracking or loss of bond.

- Actual color shade, and texture may vary due to job site conditions, installation technique and raw material. The colors of cured material may not match and in some cases differ considerably between the actual colors achieved on site. No responsibility can be accepted once the products have been applied. Rest assures that essential controls are taken during the production of the product colors.
- Color and gloss retention of the coating finish may vary depending on type of color, subject to environmental exposures such as temperature, UV intensity, chemical spills, application quality and generic type of resinous finish. Contact LATICRETE Technical representative for further information.
- Note: Substrate surfaces must be structurally sound, stable and rigid enough to support ceramic/stone tile, thin brick and similar finishes. Substrate deflection under all live, dead and impact loads, including concentrated loads, must not exceed $L/360$ for thin bed ceramic tile/brick installations or $L/480$ for thin bed stone installations where L =span length (except where local building codes specify more stringent deflection requirements)

Cautions

Before using any LATICRETE product:

- Check se.laticrete.com for any technical bulletins or updated information about the product and its application
- Contact your local LATICRETE Technical Sales representative with any questions
- Consult Safety Data Sheet for more safety information
- During cold weather, protect finished work from traffic until fully cured.
- Contains Portland cement and silica sand. May irritate eyes and skin. Avoid contact with eyes or prolonged contact with skin. In case of contact, flush thoroughly with water.
- Do not take internally. Silica sand may cause cancer or serious lung problems. Avoid breathing dust. Wear a respirator in dusty areas.

TECHNICAL DATA

Performance Properties

Test	Test Method	Results
Flexural Strength (28 days)	ASTM C348	$\geq 9.5 \text{ N/mm}^2$
Compressive Strength (28 days)	ASTM C109	$\geq 40 \text{ N/mm}^2$
Pull off Strength (28 Days)	-	$\geq 2.2 \text{ N/mm}^2$
Shrinkage (28 Days)	ASTM C531	$\leq 0.01\%$

Working Properties

Thickness	20mm
Working Time	30 – 45 minutes
Foot Traffic	24 hours

Results shown are typical but reflect test procedures used. Actual field performance will depend on installation methods and site conditions.

INSTALLATION

Surface Preparation

Installation Over Concrete Slabs

- If Terrazzo CMT is intended for use as a decorative exposed aggregates overlayment then ALL CONCRETE SURFACES MUST BE SHOT BLASTED/MECHANICALLY ABRADED if minimum 72 psi (0.5 MPa) tensile pull strength is not achieved or the substrate is contaminated.
- If Terrazzo CMT is intended for use as a wearing surface then ALL CONCRETE SURFACES MUST BE SHOT BLASTED/MECHANICALLY ABRADED if a minimum 217 psi (1.5 MPa) tensile pull strength is not achieved or the substrate is contaminated.
- All surfaces must be primed with Admix and Primer and should be between 5°C and 40°C. Surfaces should be structurally sound, clean and free from all dirt, oil, grease, adhesives, paint, sealers or curing compounds.
- New concrete surfaces must be at least 28 days old.
- Expansion joints shall be provided through the finish from all construction or expansion joints in the substrate. Follow ANSI specification A108.01-3.7 "requirements for movement joints: preparations by other trades" or TCNA detail EJ-171 "Movement Joints—Vertical & Horizontal". Do not cover expansion joints with mortar.
- Install Terrazzo CMT over floor in accordance with "Application" section below.

Priming

Use Admix & Primer as a primer/ bonding agent before application of Terrazzo CMT. Agitate thoroughly before using. Apply an even thickness of 1 coat of Admix and Primer to the cleaned substrate using a bristle broom or roller. Ensure primer is absorbed into the substrate, removing any puddles or thick areas. Allow Admix & Primer (milky-white colour) approximately 30 to 45 minutes to dry depending on the site conditions. If substrate is excessively dry, the drying time may become shorter. Keep primed surface clean. Do not allow any foot traffic onto surface. When primer turns to a clear film and feels dry to touch ("sticky"), Terrazzo CMT can be applied.

Mixing

Terrazzo CMT should be mixed with 5 - 5.5 litres of clean potable water per 25kg bag and add approximately 3.5 - 5.0kg of the selected decorative grains into the mixing container. Mix for another 3 - 5 minutes until the mix is homogenous. Do not over water. For manual application, add product to water and mix for 5 minutes with an electrical power helical spinner mixer (1000 – 1400 rpm) to obtain a lump free mix. Allow mix to sit for 2 minutes before use.

Note: Keep primed surface clean. Do not allow any foot traffic onto surface.

Application

Pour blended material onto the prepared substrate at a thickness of minimum 20mm for all surfaces. Immediately smooth the poured mixture with a steel trowel. For multiple colour finishes, the divider

strip should be installed prior to the application. Leave it to be cured for 7 days before proceed the grinding / polishing regime.

Perimeter Isolation Strip

It is essential that all walls and building elements are isolated from the self leveling overlayment pours to ensure proper expansion allowance against all restraining surfaces.

Note: It is recommended to install a perimeter isolation strip before the installation of Cementitious Terrazzo. Attach the perimeter isolation strip to the perimeter wall of the entire subfloor, as well as around the perimeter of any protrusions, in order to isolate the floor and wall/restraining surfaces. Temporarily fasten perimeter isolation strip in place with staples masking, duct, or carpet tape. The perimeter isolation strip can then be removed after the tiles have set firm. The joints can then be filled with LATASIL™.

Follow manufacturer's recommendations for installation procedures and grinding/ polishing regime. Allow Terrazzo CMT to dry in accordance with those recommendations.

Curing & Permissible Trafficking

Allow 24 hours for foot traffic, 7 days for grinding / polishing.

AVAILABILITY AND COST

Availability

LATICRETE and LATAPOXY materials are available worldwide. For distributor information, call:

Telephone: (65) 6515-3028

Fax: (65) 6515-3037

For on-line distributor information, visit LATICRETE at se.laticrete.com

Cost

Contact a LATICRETE Distributor in your area.

WARRANTY

LATICRETE South East Asia Pte Ltd warrants that Terrazzo CMT is free from manufacturing defects and will not to break down, deteriorate or disintegrate under normal usage for a period of one (1) year from date of purchase subject to terms and conditions stated.

MAINTENANCE

LATICRETE and LATAPOXY grouts require routine cleaning with a neutral pH soap and water. All other LATICRETE and LATAPOXY materials require no maintenance but installation performance and durability may depend on properly maintaining products supplied by other manufacturers.

TECHNICAL SERVICES

Technical Assistance

Information is available by calling:

LATICRETE South East Asia Pte Ltd
No. 38 Sungei Kadut Street 2
(Level 2, A3)
Singapore 729245
Telephone: (65) 6515-3028
Fax: (65) 6515-3037
Email: enquiry@laticrete.com.sg

Technical and safety literature

To acquire technical and safety literature, please visit our website at
se.laticrete.com

Disclaimer

LATICRETE is not responsible for product use beyond its intended application. Liability is limited to replacing defective materials. We are not responsible for any loss or damage resulting from improper use. Product specifications are subject to change without notice. For the most up-to-date information, please visit our website at se.laticrete.com.