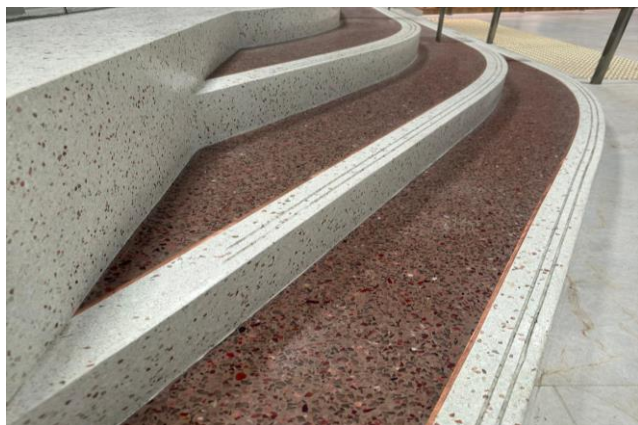




**For the Builders  
of a Better World™**

## Terrazzo EP

TERRAZZO EP is a 4 component, 100% solids, high strength solvent free epoxy based, high wear resistant, exposed aggregates epoxy floor finish, which incorporates with a wide variety of decorative, grains. e.g. granite, glass chips and pearl flags etc. It is specially designed for being used as an attractive interior decorative floor finish and a high performance wearing surface.



### FEATURES/BENEFITS

- Decorative exposed aggregates finish
- Design versatile and customized finish
- High wearing resistance
- High impact resistance
- High abrasion resistance
- Low maintenance
- Low odour application
- Low VOC
- High durability and tough
- Non-staining finish
- Available in wide colour variants

\*Sealer is recommended to be used as a finishing

### USES

- Residential
- Retail space
- Food Serving Areas
- Showrooms
- Offices
- Commercial Complex
- Shopping Malls
- Cafeteria / Bistro
- Hotel / Recreation
- Education Facilities
- Laboratory
- Pharmaceutical
- Healthcare

### MANUFACTURER/ DISTRIBUTED BY

LATICRETE South East Asia Pte Ltd  
No. 38 Sungei Kadut, Street 2 (Level 2, A3) Singapore 729245  
Telephone: +65 6515 3028 Fax: +65 6515 3037  
Internet: [se.laticrete.com](http://se.laticrete.com)

### STANDARDS/CERTIFICATIONS

- |              |              |
|--------------|--------------|
| ▪ ASTM C579  | ▪ ASTM D4060 |
| ▪ ASTM C580  | ▪ ASTM D4541 |
| ▪ ASTM D2240 | ▪ ASTM C531  |



This product has been certified green by  
Singapore Green Building Council.

### Suitable Substrates

- Concrete
- Cement backer board\*
- Vapor Ban Hybrid
- Cement mortar beds

\*Consult cement backer board manufacturer for specific installation recommendations.

### Packaging

Part A: 5kg

Part B: 3kg

Part C: 12.5kg

Part D: 25kg (Selected blended aggregates/glass chips)

Full set packaging: 45.5kg

### Colour

Paris Green(Green)

Tufts Blue(Blue)

Vermillion(Red)

Desert Sand(Beige)

Aspen White (White)

### Approximate Coverage

\*One set of TERRAZZO EP (Part A, B, C and D) yield a coverage of Approximate 1.95 – 1.96m<sup>2</sup> at 10mm thick per layer.

\* Selected aggregates or decorative chips can be added, thus the coverage will be varied depends on the dosage of the aggregates / decorative chips.

### Shelf Life

Factory sealed containers of this product are guaranteed to be of first quality for 12 months if stored at shelter area with temperatures  $\geq 0^{\circ}\text{C}$  and  $\leq 40^{\circ}\text{C}$ .

‡ High relative humidity will reduce the shelf life of bagged product.

### Limitations

- Apply only on concrete substrate and well-bonded.
- For interior use only.
- Do not install when surface temperature is below  $5^{\circ}\text{C}$  or above  $40^{\circ}\text{C}$ , or when ambient air temperature is expected to fall below  $10^{\circ}\text{C}$  during placement or before material takes final set.
- Do not install over painted or gypsum-based surfaces.
- Do not exceed recommended mixing ratio as indicated in mixing instructions.
- Never mix with cement or admixtures.
- Do not apply TERRAZZO EP over waterproofing or crack isolation membranes.
- Do not bond directly to OSB, particle board or Masonite® surfaces.
- Not for use in submerged applications
- TERRAZZO EP should not be installed over any moving joints or structural cracks (cracks greater than 1/16" [1.5mm] in width or any crack which experiences vertical displacement). All existing expansion joints, cold joints and control joints must be brought up through the wear surface cement. Failure to honor movement joints will result in cracking or loss of bond.

- Actual color shade, and texture may vary due to job site conditions, installation technique and raw material. The colors of cured material may not match and in some cases differ considerably between the actual colors achieved on site. No responsibility can be accepted once the products have been applied. Rest assures that essential controls are taken during the production of the product colors.
- Color and gloss retention of the coating finish may vary depending on type of color, subject to environmental exposures such as temperature, UV intensity, chemical spills, application quality and generic type of resinous finish. Contact LATICRETE Technical representative for further information.
- Note: Substrate surfaces must be structurally sound, stable and rigid enough to support ceramic/stone tile, thin brick and similar finishes. Substrate deflection under all live, dead and impact loads, including concentrated loads, must not exceed L/360 for thin bed ceramic tile/brick installations or L/480 for thin bed stone installations where L=span length (except where local building codes specify more stringent deflection requirements)

### Cautions

Before using any LATICRETE product:

- Check [se.laticrete.com](http://se.laticrete.com) for any technical bulletins or updated information about the product and its application
- Contact your local LATICRETE Technical Sales representative with any questions
- Consult Safety Data Sheet for more safety information
- During cold weather, protect finished work from traffic until fully cured.
- Contains Portland cement and silica sand. May irritate eyes and skin. Avoid contact with eyes or prolonged contact with skin. In case of contact, flush thoroughly with water.
- Do not take internally. Silica sand may cause cancer or serious lung problems. Avoid breathing dust. Wear a respirator in dusty areas.

### TECHNICAL DATA

#### Performance Properties

Test	Test Method	Results
Compressive Strength (7 days)	ASTM C579	$\geq 71.5 \text{ N/mm}^2$
Flexural Strength (7 days)	ASTM C580	$\geq 38.5 \text{ N/mm}^2$
Shear Strength (7 days) - 7 Days Cure - Thermal Shock - Water Immersion	-	$\geq 10.45 \text{ N/mm}^2$ $\geq 15.88 \text{ N/mm}^2$ $\geq 16.23 \text{ N/mm}^2$
Abrasion (g) 1000g/ 1000 cycles	ASTM D4060	$\leq 0.12\text{g}$
Pull off Strength	ASTM D4541	$\geq 2.95 \text{ N/mm}^2$
Shrinkage	ASTM C531	0.02%
Hardness (Shore D)	ASTM D2240	$\geq 87$

## Working Properties

Thickness	10mm
Working Time	30 – 45 minutes
Foot Traffic	24 hours

Results shown are typical but reflect test procedures used. Actual field performance will depend on installation methods and site conditions.

## INSTALLATION

### Surface Preparation

#### Installation Over Concrete Slabs

- If TERRAZZO EP is intended for use as a decorative exposed aggregates overlayment then ALL CONCRETE SURFACES MUST BE SHOT BLASTED/MECHANICALLY ABRADED if minimum 72 psi (0.5 MPa) tensile pull strength is not achieved or the substrate is contaminated.
- If TERRAZZO EP is intended for use as a wearing surface then ALL CONCRETE SURFACES MUST BE SHOT BLASTED/MECHANICALLY ABRADED if a minimum 217 psi (1.5 MPa) tensile pull strength is not achieved or the substrate is contaminated.
- All surfaces must be primed with Primer EP and should be between 5°C and 40°C. Surfaces should be structurally sound, clean and free from all dirt, oil, grease, adhesives, paint, sealers or curing compounds.
- New concrete surfaces must be at least 28 days old.
- Expansion joints shall be provided through the finish from all construction or expansion joints in the substrate.

### Priming

Use Primer EP as a primer coat before application of TERRAZZO EP. Mix component A & B using a slow speed mixer until the mixture is homogenous. Apply an even thickness of 1 coat of Primer EP onto the prepared substrate using a squeegee and roller. Allow the Primer EP to cure for 8 – 10 hours depending on the site conditions.

### Mixing

Mix the component A and B using an electrical power helical spinner mixer until the mix is homogenous and add the Part C and mix for 2 - 3 minutes. Add the selected decorative grains and glass chips into the mixing container. Mix for another 3 – 5 minutes until the mix is homogenous and obtain a lump free mixture.

### Application

Pour mixed material onto the prepared surface at a thickness of minimum 10mm using a clearance control screed box. Immediately smoothen the poured mixture with a steel trowel. For multiple colour finishes, the divider strip should be installed prior to the application. Leave it to be cured for 24 hours before proceed the grinding / polishing regime.

### Perimeter Isolation Strip

It is essential that all walls and building elements are isolated from the epoxy finish to ensure proper expansion allowance against all restraining surfaces.

**Note:** It is recommended to install a perimeter isolation strip before the installation of TERRAZZO EP. Attach the perimeter isolation strip to the perimeter wall of the entire subfloor, as well as around the perimeter of any protrusions, in order to isolate the floor and wall/restraining surfaces. Temporarily fasten perimeter isolation strip in place with staples masking, duct, or carpet tape. The perimeter isolation strip can then be removed after the tiles have set firm. The joints can then be filled with LATASIL™.

Follow manufacturer's recommendations for installation procedures and grinding / polishing regime. Allow TERRAZZO EP to dry in accordance with those recommendations.

### Curing & Permissible Trafficking

Allow 24 hours for foot traffic, 3 days for grinding / polishing. Full trafficking only allowed after all the process is completed.

## AVAILABILITY AND COST

### Availability

LATICRETE and LATAPOXY materials are available worldwide. For distributor information, call:

**Telephone:** (65) 6515-3028

**Fax:** (65) 6515-3037

For on-line distributor information, visit LATICRETE at [se.laticrete.com](http://se.laticrete.com)

### Cost

Contact a LATICRETE Distributor in your area.

## WARRANTY

LATICRETE South East Asia Pte Ltd warrants that TERRAZZO EP is free from manufacturing defects and will not to break down, deteriorate or disintegrate under normal usage for a period of one (1) year from date of purchase subject to terms and conditions stated.

## MAINTENANCE

LATICRETE and LATAPOXY grouts require routine cleaning with a neutral pH soap and water. All other LATICRETE and LATAPOXY materials require no maintenance but installation performance and durability may depend on properly maintaining products supplied by other manufacturers.

## TECHNICAL SERVICES

### Technical Assistance

Information is available by calling:

LATICRETE South East Asia Pte Ltd

No. 38 Sungei Kadut Street 2

(Level 2, A3)

Singapore 729245

Telephone: (65) 6515-3028

Fax: (65) 6515-3037

Email: [enquiry@laticrete.com.sg](mailto:enquiry@laticrete.com.sg)

**Technical and safety literature**

To acquire technical and safety literature, please visit our website at [se.laticrete.com](http://se.laticrete.com)

**Disclaimer**

LATICRETE is not responsible for product use beyond its intended application. Liability is limited to replacing defective materials. We are not responsible for any loss or damage resulting from improper use. Product specifications are subject to change without notice. For the most up-to-date information, please visit our website at [se.laticrete.com](http://se.laticrete.com).